



Modular Test Cell Chassis up to 1,200 hp



Inside dimensions

25 ft, 4 in. wide x 49 ft, 4 in. deep x 20 ft high
(7.7 m wide x 15 m deep x 6.1 m high)

Outside dimensions

26 ft wide x 50 ft deep x 20 ft, 6 in. high
(7.9 m wide x 15.2 m deep x 6.2 m high)
(not including exhaust plenum)

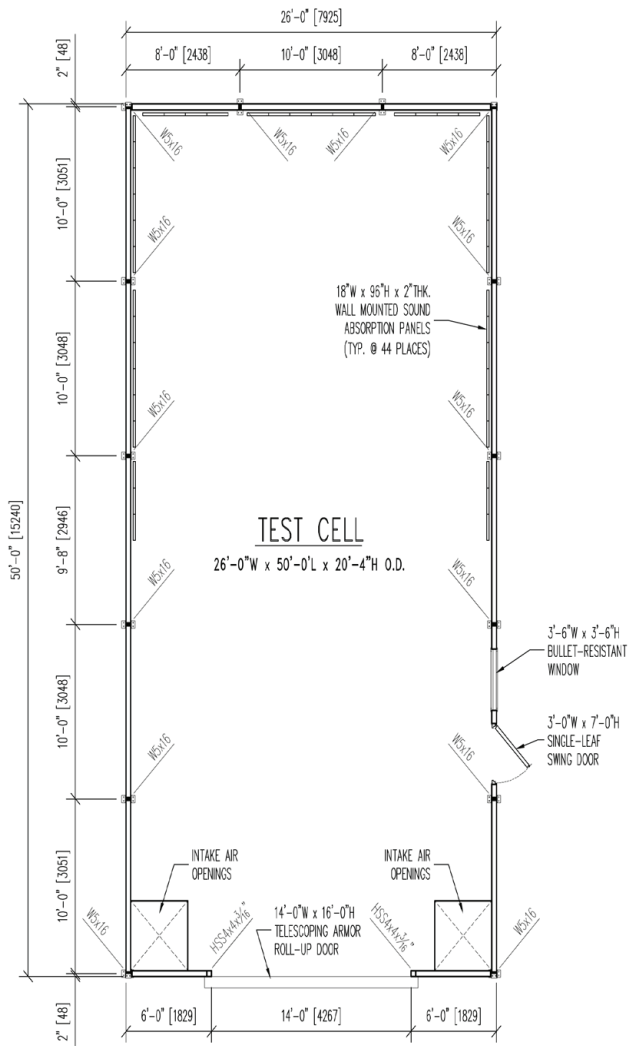
Images shown are for display purposes only,
actual Chassis Modular Test Cell will vary.



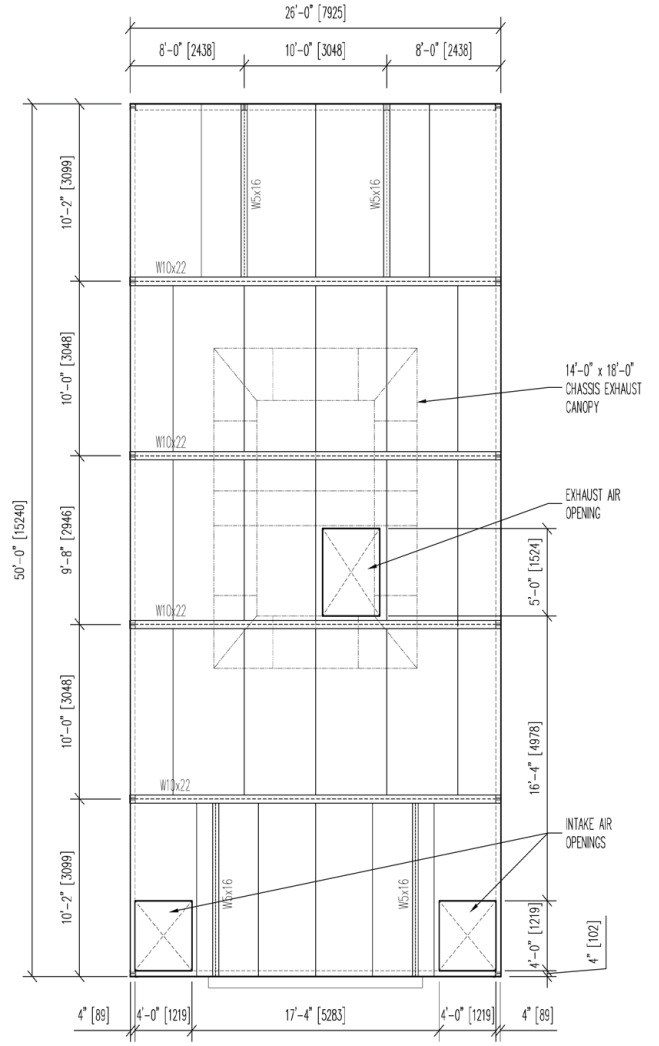
Modular, Sound Attenuating Chassis Test Cell up to 1,200 hp

- All doors, walls and windows STC 50 rated
- All ceiling panels STC 42 rated (unless otherwise specified)
- Maximum roof load 34 lb-ft² (166 kg/m²) (not designed for storage but can support men walking on it)
- Walls and ceiling are paint-ready A-60 galvanized steel
- Two (2) bullet-resistant windows 3.5 x 3.5 ft (1.0 x 1.0 m)
- Man door with closer 3 x 7 ft (0.91 x 2.1 m)
- Steel telescoping door STC 29 rated with mechanical operator 14 ft wide x 16 ft high (4.3 m wide x 4.8 m high)
- Estimated shipping weight is 47,000 lb (21,319 kg)
- Installation drawings are provided
- Installation service available upon request

Everything you need to succeed



CHASSIS TEST CELL - FLOOR PLAN



CHASSIS TEST CELL - ROOF PLAN

Everything you need to succeed



3602 West Wheelhouse Road, Milwaukee, Wisconsin 53208 U.S.A.
414-755-0040 www.taylordyno.com

SMS7004v002