



Actual product may differ from image shown

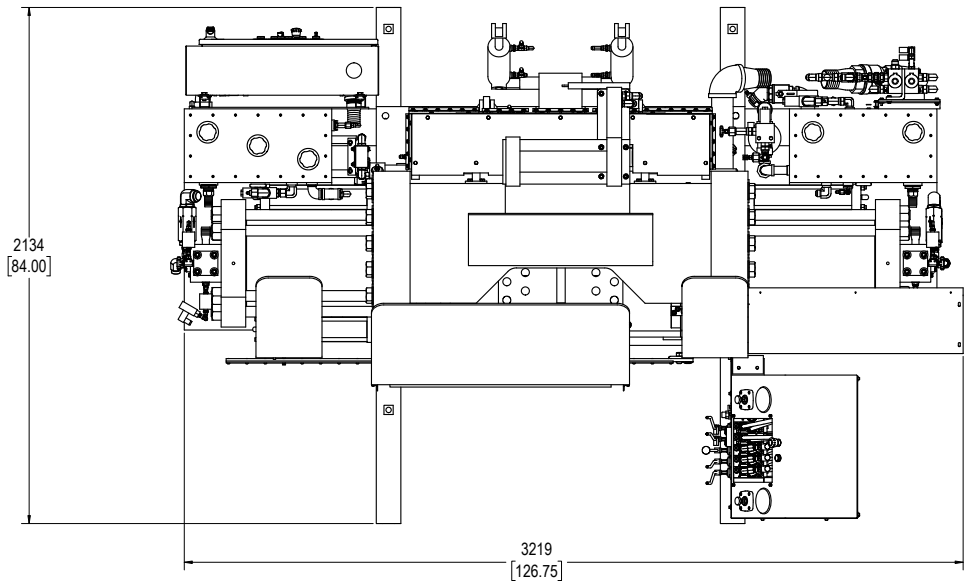
The Track Press provides a tough and dependable platform for repairing, rebuilding, and reconditioning heavy-duty construction and mining vehicle tracks. The Track Press provides the tool needed for fast and easy track repairs, allowing you to maximize productivity and increase profitability.

The Track Press features some of the most advanced technology for today's undercarriage track repairs. Its innovative quick-change tool design allows jobs to be set up quickly and efficiently. The easy, exchangeability of tools between different track models and pitch sizes results in fewer required contact tools.

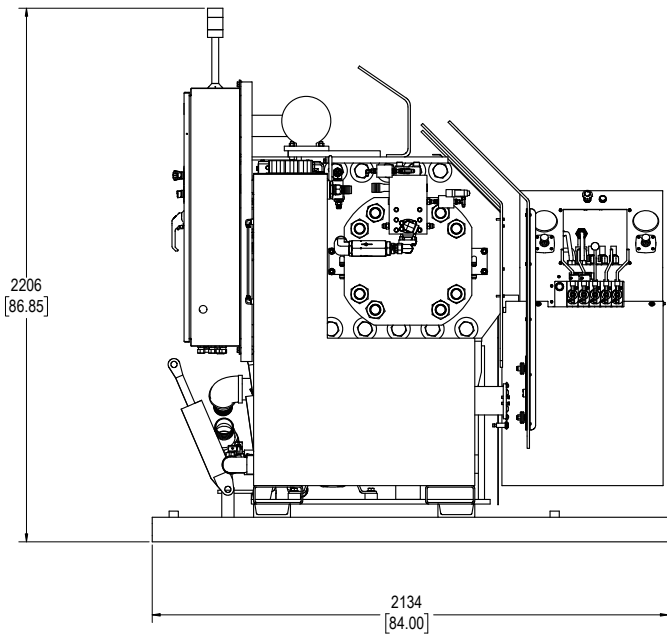
The Track Press is designed for operator efficiency. All hydraulic components are mounted so access is more convenient for both operation and clean up. The layout of the control station enables efficient, unobstructed operation of the track press. A lighted work area and operator safety door increases operator safety.

Features and Benefits

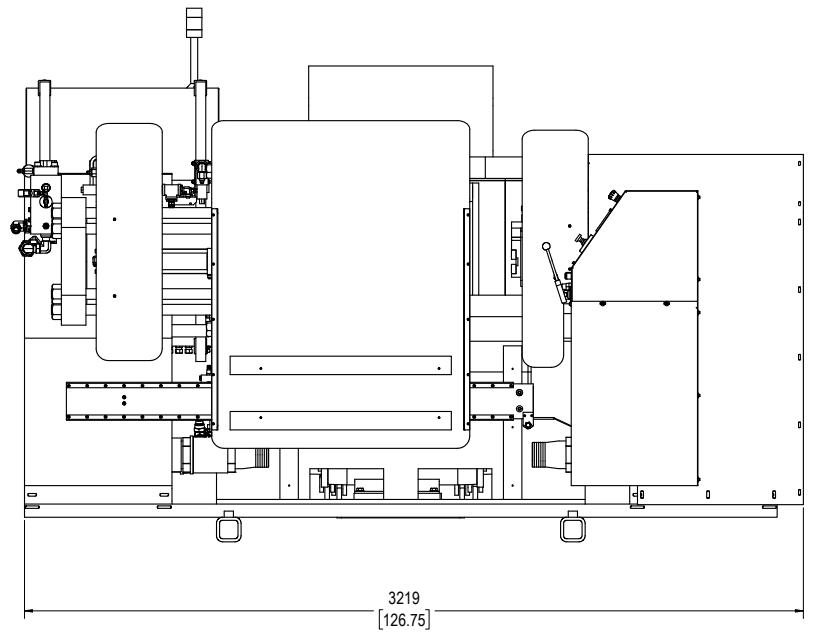
- Integrates an efficient pump and motor design to minimize vibration, the sturdy box frame absorbs any remaining vibration and noise
- Compact design maintains strength without unnecessary bulk
- Quick and easy tooling with T-slots tool bar mounts and adjustable horizontal and vertical tooling knobs
- The one-speed winch easily handles the track as it is guided onto the conveyor
- Faster ram-speeds result in decreased cycle time and quicker service turn-around time
- The 375 tons of pressing capacity provides enough force to disassemble the most difficult track
- Adjustable side tooling bars allow more positional control of the contact tools
- Vertical adjustability results in the need for only one saddle per pitch
- Lights mounted on the press frame helps to properly align the tooling with the track components



Top View



Side View



Front View

Specifications

Operations:

- Ram Force: 375 Tons
- Ram Travel: 30.5 cm (12.0 in)
- Ram Speed: 4 cm/s (1.6 in/s) (advance)
7.6 cm/s (3.0 in/s) (retract)
- Winch Speed: One
- Winch Capacity: 53 kN (12,000 lb)

Cylinders:

- Stroke: 30.5 cm (12.0 in)
- Piston Diameters: 35.5 cm (14.00 in)
(1 main cylinder per side)
7.6 cm (3.0 in)
(2 secondary cylinders per side)

Hydraulics:

- Fluid Capacity: 871 liters (230 gal)
- Filtration: 10 microns
- Maximum Pressure: 31,026 kPa (4500 psi)
- Maximum Flow Rate: Piston Pump 83 lpm (22 gpm)
Vane Pump 227 lpm (60 gpm)
- Pressure Adjustment: Remote hydraulic
- Readout Gauge: Calibrated in tons of ram force (no psi conversions necessary)
- Valving: All remote-electric (main rams are manual direct-operating)

Electrical:

- Voltage: 190/230/380/460/575
- Frequency: 50 or 60 Hz
- Phase: Three-phase
- Running Amps: Refer to electric motor specification name plate for amperage
- Full Load Amps: Refer to electric motor specifications name plate for amperage
- Horsepower: 30
- Work Light: 13 Watt

Size and Weight:

- Dimensions: See "Track Press and Conveyor (wide x deep x high) Layout" drawing in the manual.
- Total Shipping Weight: 11,249 kg (24,800 lb)
- Including indexer and 15 m (50 ft) conveyor:
 - » Track Press: 7598 kg (16750 lb)
 - » Indexer: 794 kg (1750 lb)
 - » Conveyor, 10 ft: 671 kg (1480 lb)
 - » Conveyor, 20 ft: 3000 kg (6300 lb)
 - » Ramp: 132 kg (290 lb)
 - » Miscellaneous: 500 kg (1100 lb)