



TD-36S-AC / Chassis Dynamometer



Image shown is for display only,
actual TD-36S-AC may vary.

TD-36S-AC Chassis Dynamometer

Specifications

| | |
|---------------------|---|
| Weight Capacity: | 30,000 lb (13,608 kg) per axle |
| Roll Brakes: | Pneumatically-actuated disc |
| Shipping Weight: | 19,700 lb (8,936 kg) |
| Capacity: | 460 hp at 40 mph (343 kW at 64 kph) |
| Rolls: | 36 by 31 in. (915 by 787 mm) 2 fixed rolls |
| Pit Required Depth: | 35 in. (889 mm) |

Recommended Accessories

- Calibration Weights
- Stone Guard
- Exhaust Canopy
- Horizontal Exhaust System
- Water Recirculating System
- Guard Rail
- Wheel Chocks
- DynPro₂ Data Acquisition & Control System

Everything you need to succeed

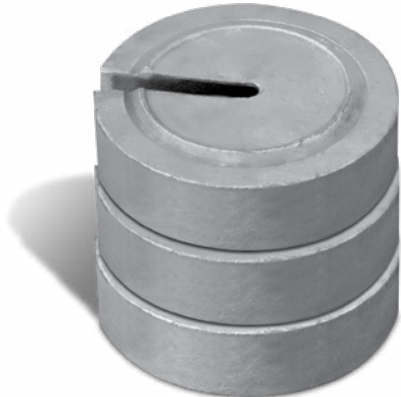
Optional Accessories



Wheel Chocks



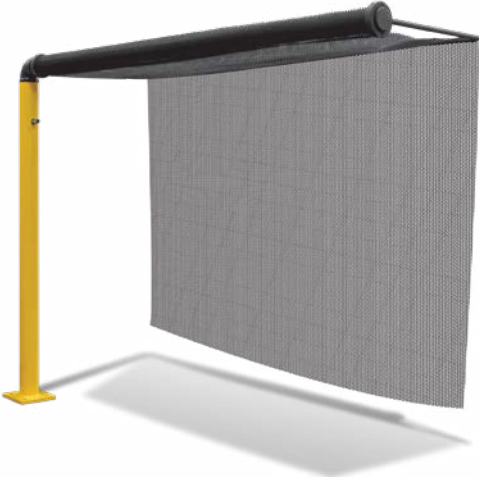
M-Tach and O-Tach



Optional Calibration Weights



Work Table



Rear Wheel Stone Guard

Various Facility Support Systems and Services Available



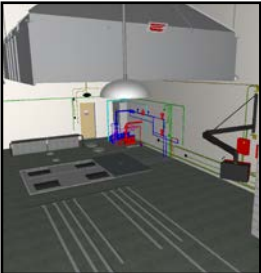
DynPro₂ Data Acquisition & Control System



Exhaust Hood



Water Recirculation

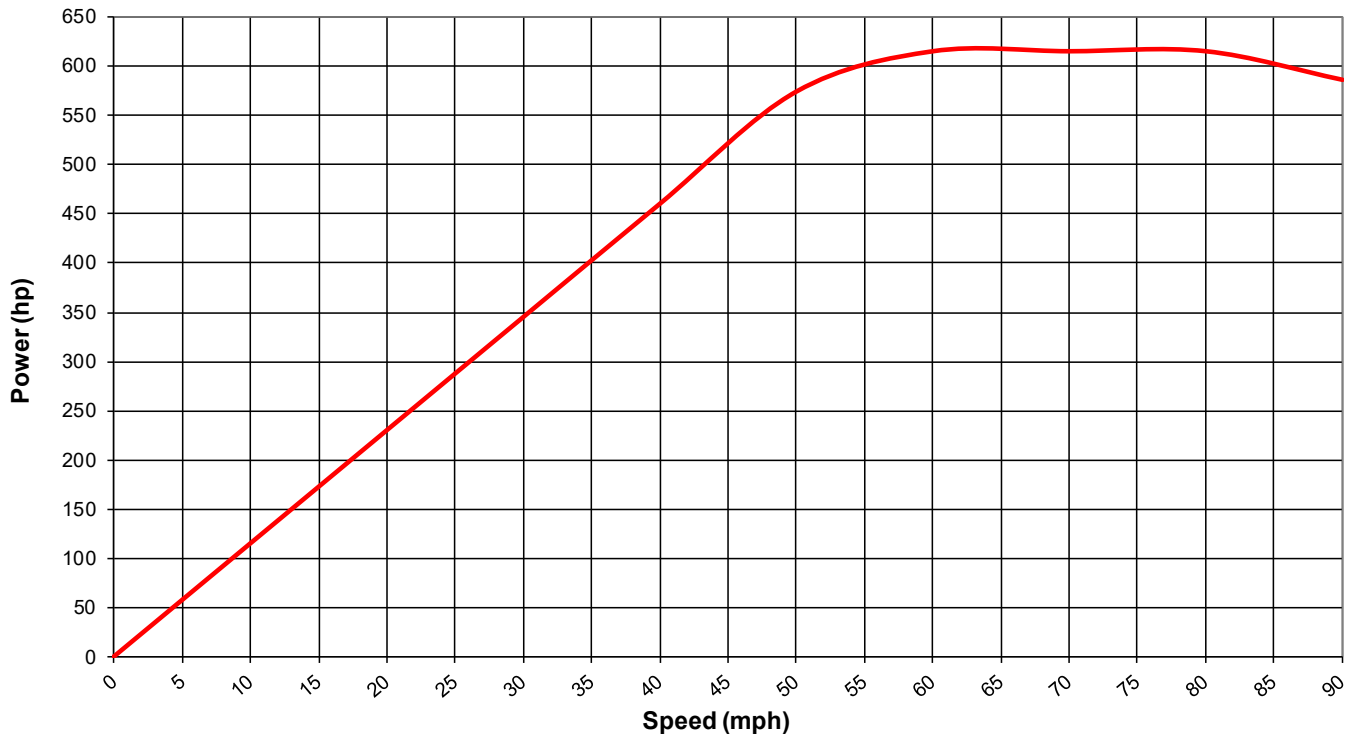


Design Services

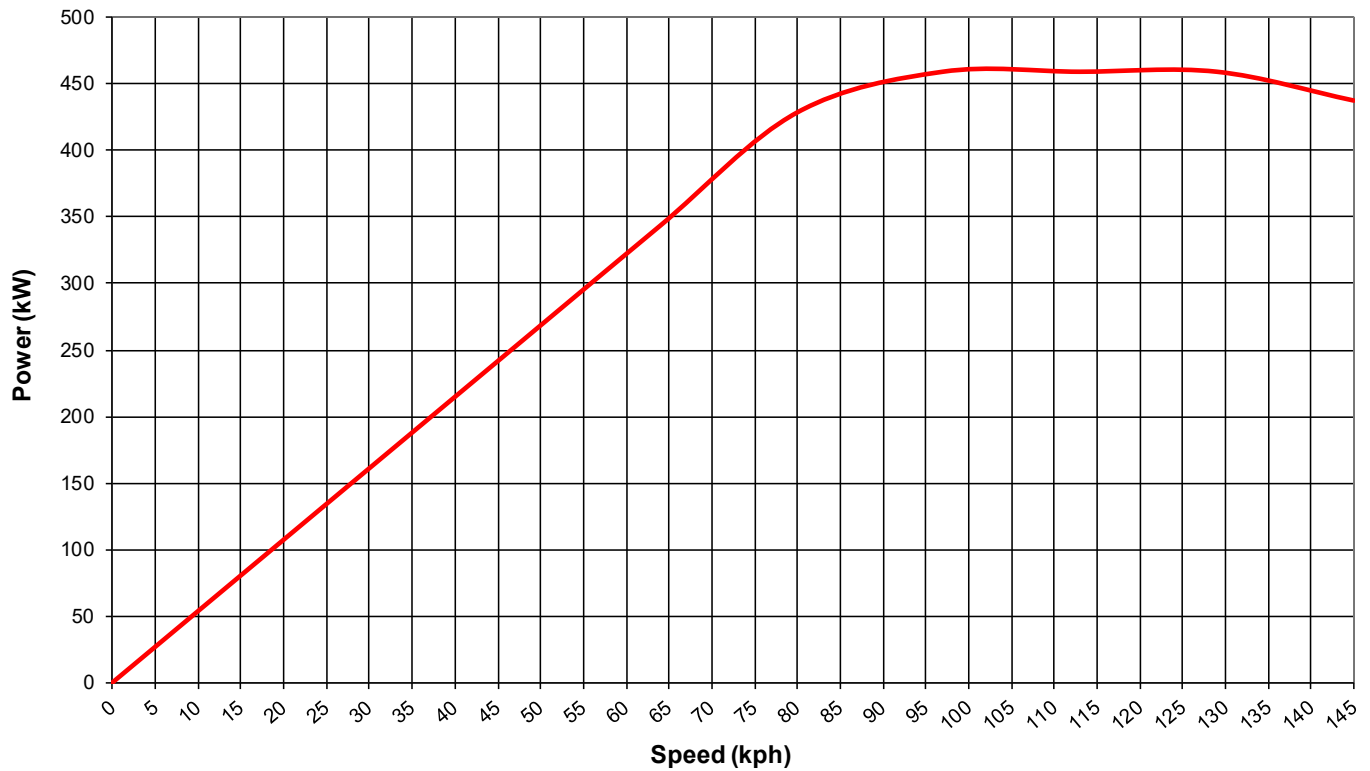


Commissioning, Start-up & Training

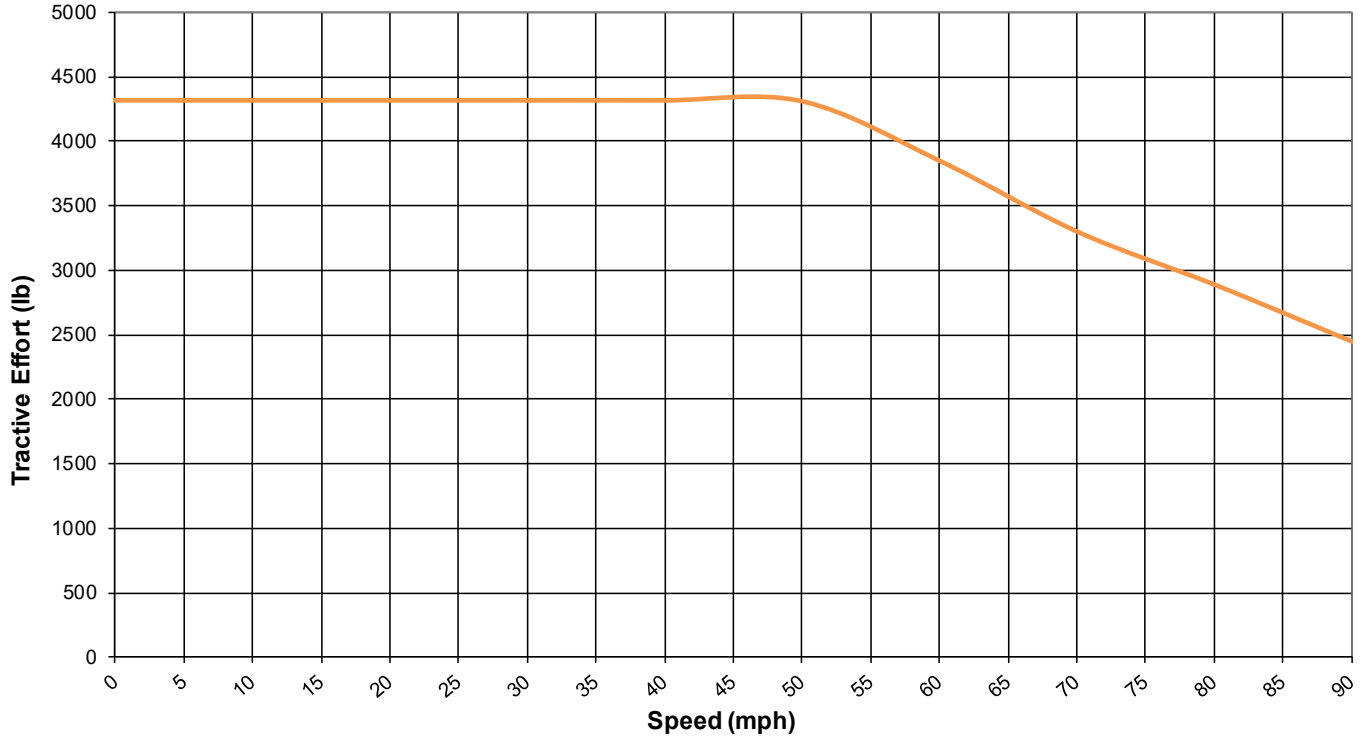
TD-36S-AC (US Customary)



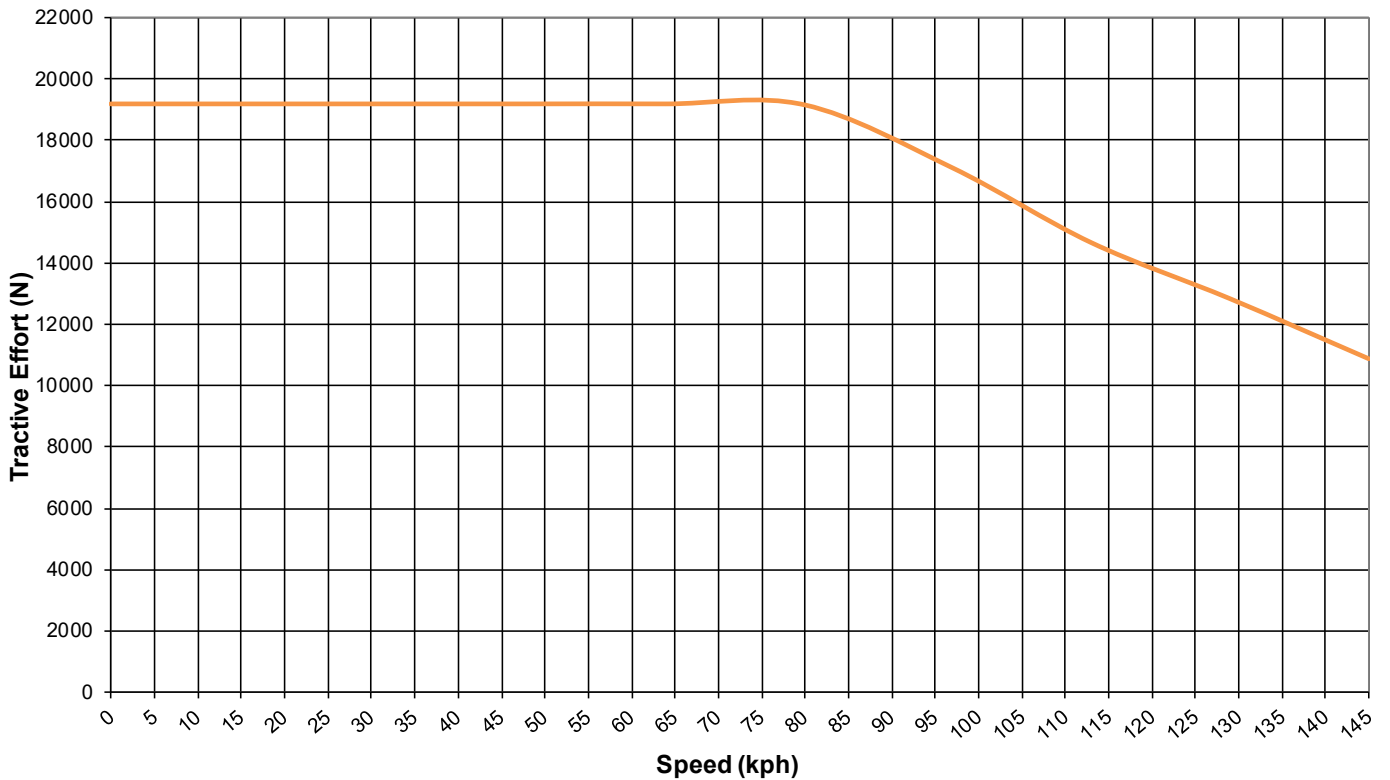
TD-36S-AC (S.I.)

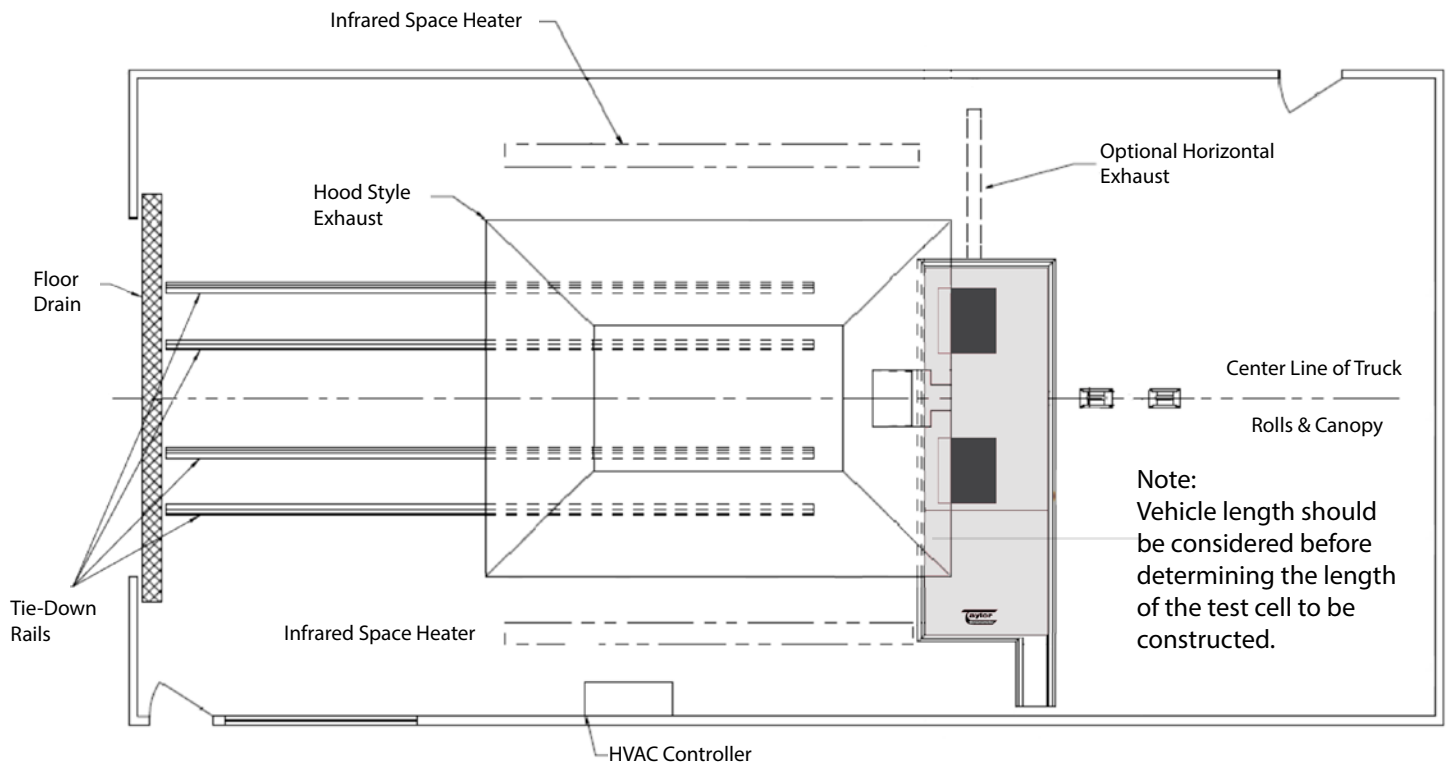


TD-36S-AC (US Customary)



TD-36S-AC (S.I.)





Specifications

| | |
|---------------------|---|
| Weight Capacity: | 30,000 lb (13,608 kg) per axle |
| Roll Brakes: | Pneumatically-actuated disc |
| Shipping Weight: | 19,700 lb (8,936 kg) |
| Capacity: | 460 hp at 40 mph (343 kW at 64 kph) |
| Rolls: | 36 by 31 in. (915 by 787 mm) 2 fixed rolls |
| Pit Required Depth: | 35 in. (889 mm) |

Drawing Notes

- AC power, air and water required at one side wall as applicable.
- Room length, and pit location within length, must be determined by user to fit maximum truck length and rear overhang.
- Provide at least one man door for fire escape near rear of room, but not in rear wall because someone entering during a test could be struck by a stone flung from a tire. Provide ample fire extinguishers at each door and near driver.
- "Back-on, Drive-off" installation configuration preferred.

Everything you need to succeed

