



TD-24S-AC / Chassis Dynamometer

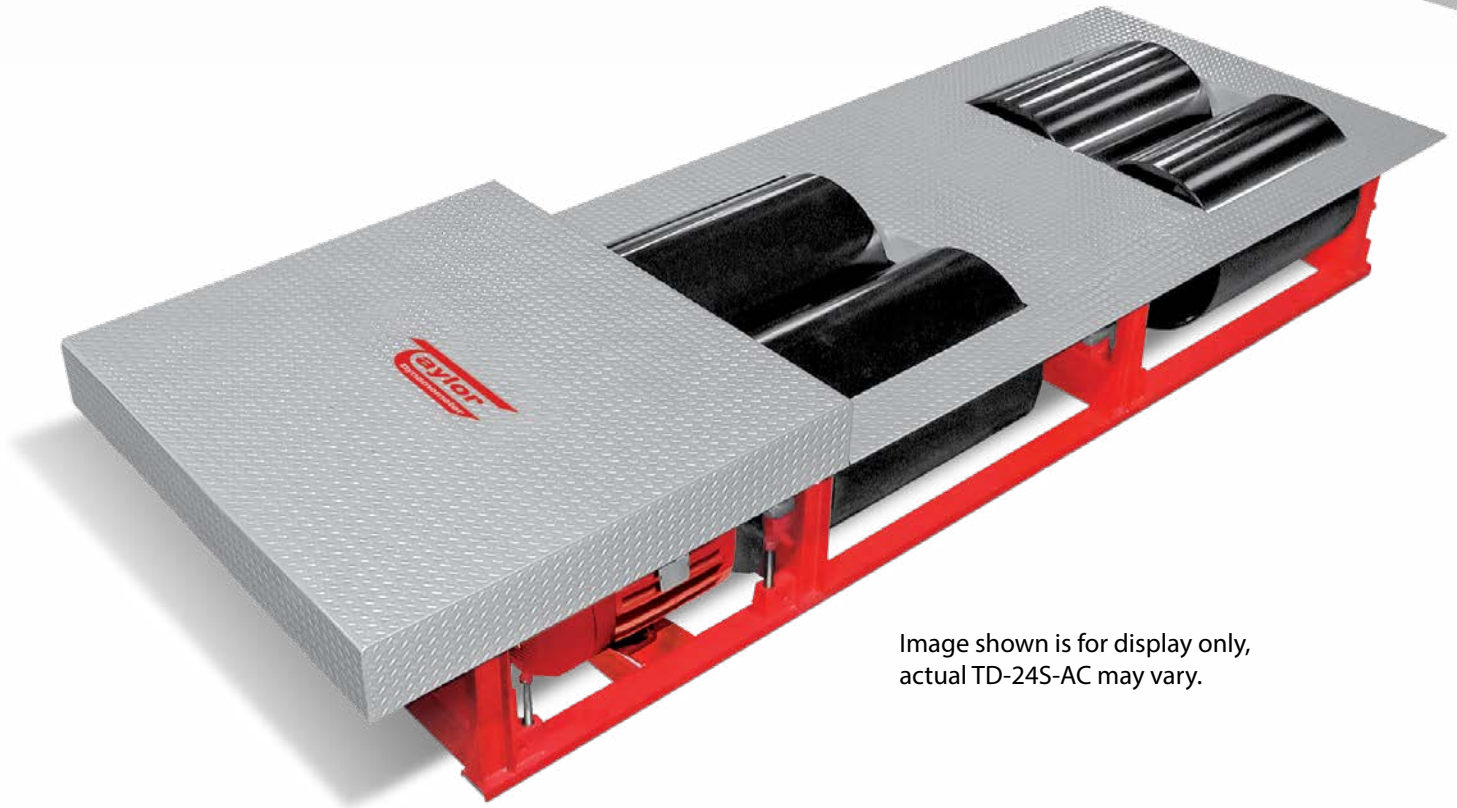


Image shown is for display only,
actual TD-24S-AC may vary.

TD-24S-AC Chassis Dynamometer

Specifications

Weight Capacity:	30,000 lb (13,608 kg) per axle
Roll Brakes:	Pneumatically-actuated disc
Shipping Weight:	19,700 lb (8,936 kg)
Capacity:	517 hp at 30 mph (385 kW at 48 kph)
Rolls:	24 by 34 in. (610 by 864 mm) 4 front fixed rolls
Pit Required Depth:	26 in. (660 mm)

Recommended Accessories

- Calibration Weights
- Stone Guard
- Exhaust Canopy
- Horizontal Exhaust System
- Water Recirculating System
- Guard Rail
- Wheel Chocks
- DynPro₂ Data Acquisition & Control System

Everything you need to succeed

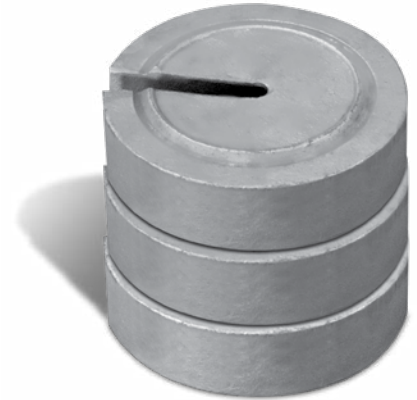
Optional Accessories



Wheel Chocks



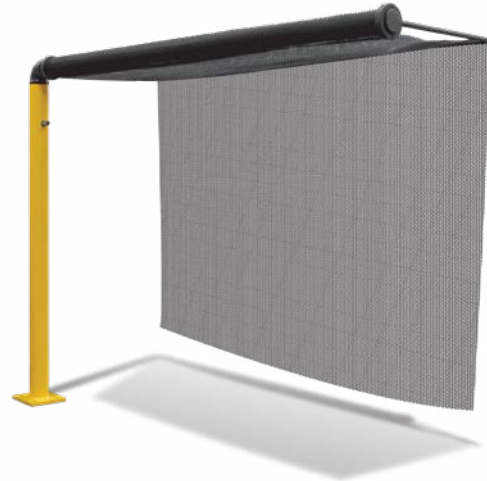
M-Tach and O-Tach



Optional Calibration Weights



Work Table



Rear Wheel Stone Guard

Various Facility Support Systems and Services Available



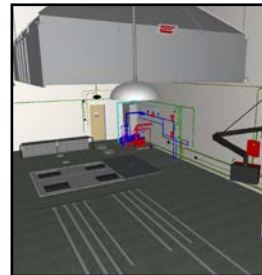
DynPro₂ Data Acquisition & Control System



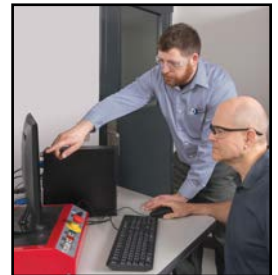
Exhaust Hood



Water Recirculation

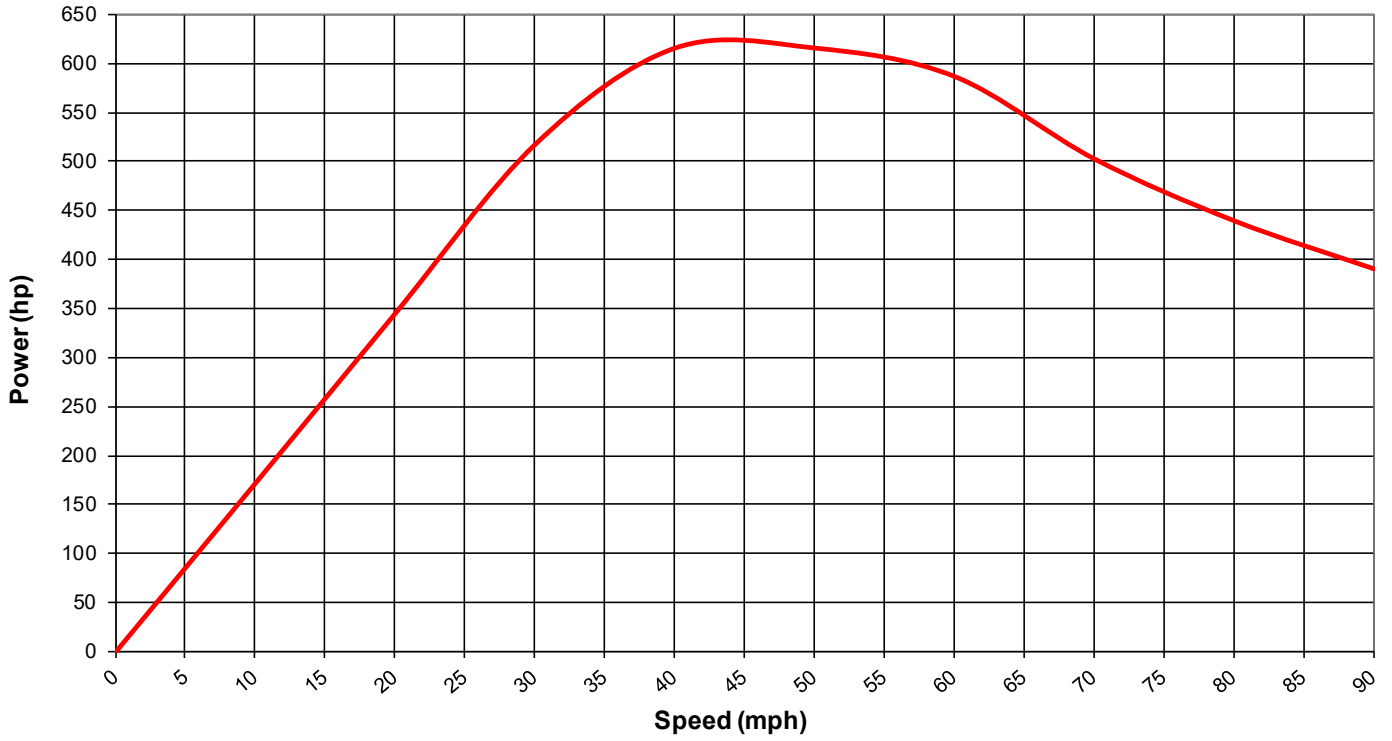


Design Services

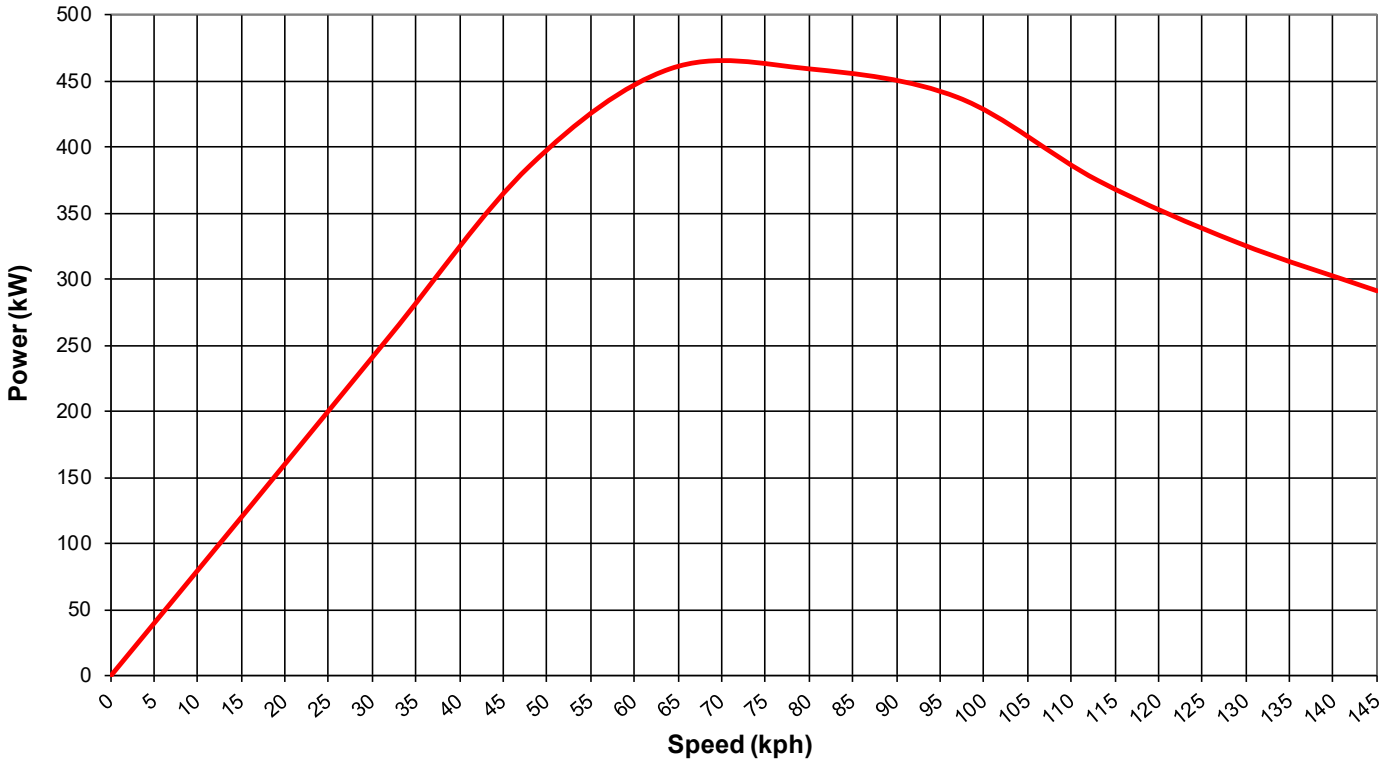


Commissioning, Start-up & Training

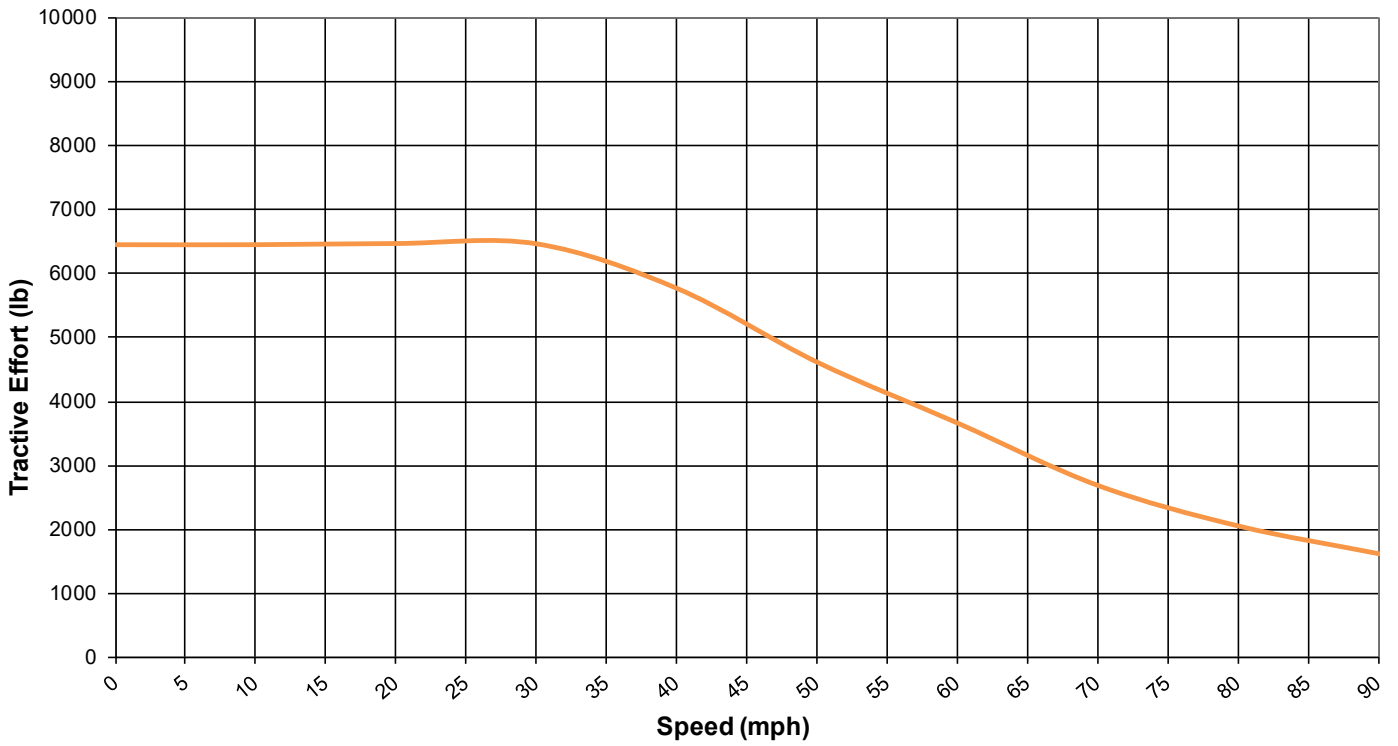
TD-24S-AC (US Customary)



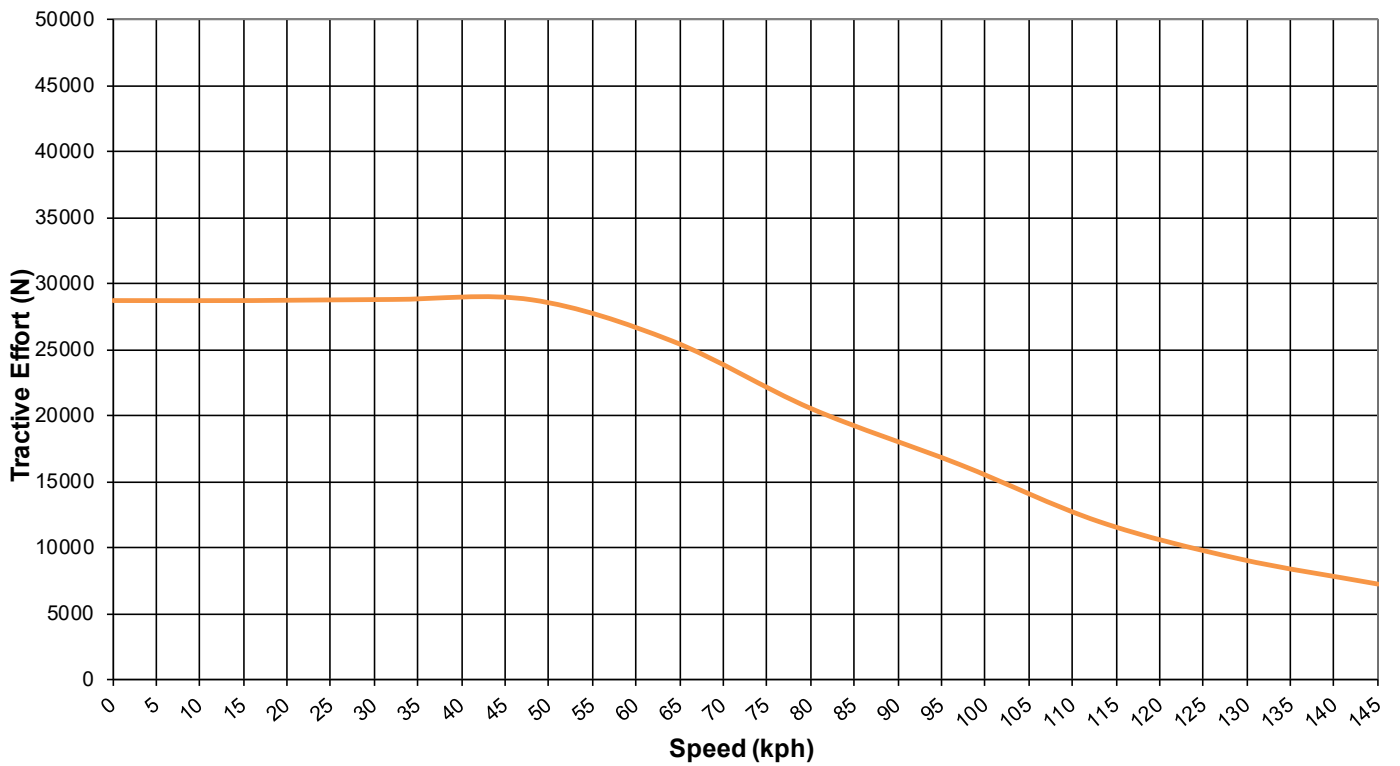
TD-24S-AC (S.I.)

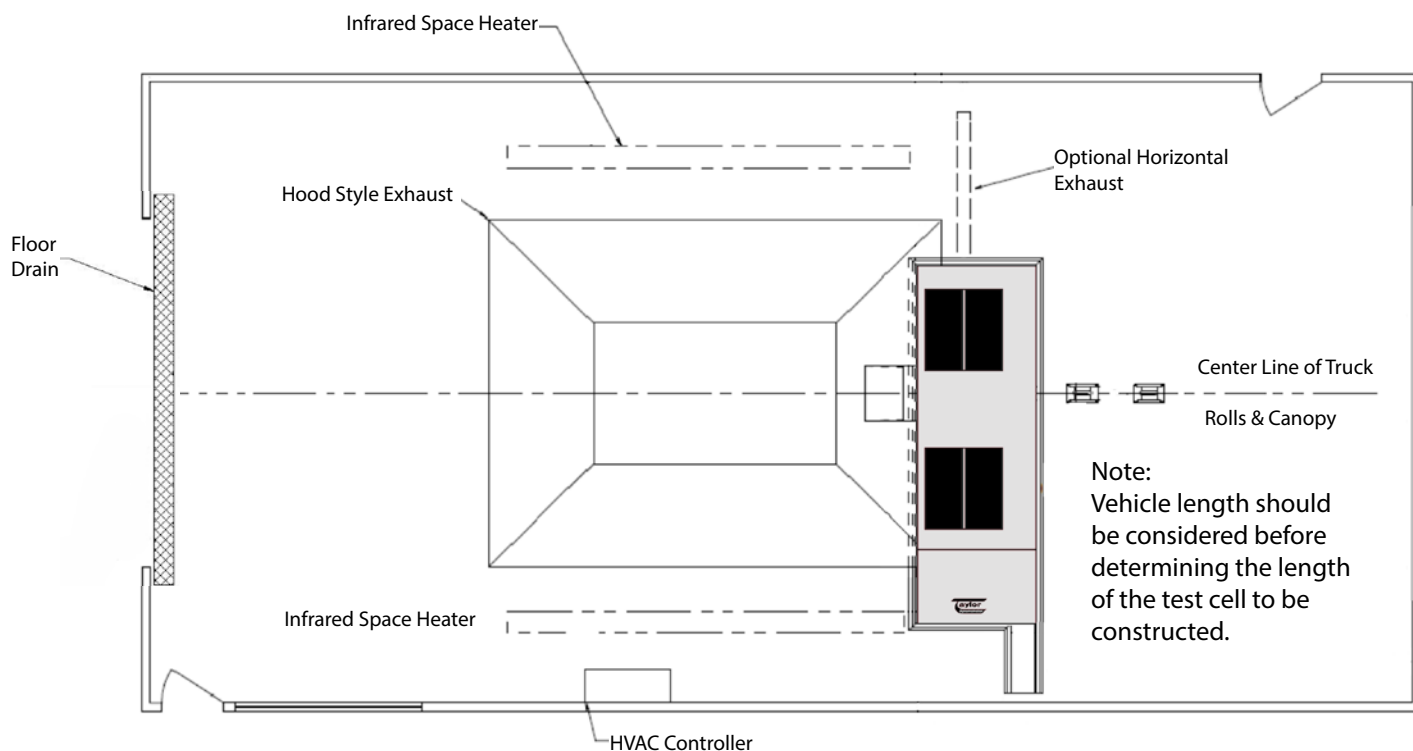


TD-24S-AC (US Customary)



TD-24S-AC (S.I.)





Specifications

Weight Capacity:	30,000 lb (13,608 kg) per axle
Roll Brakes:	Pneumatically-actuated disc
Shipping Weight:	19,700 lb (8,936 kg)
Capacity:	517 hp at 30 mph (385 kW at 48 kph)
Rolls:	24 by 34 in. (610 by 864 mm) 4 front fixed rolls
Pit Required Depth:	26 in. (660 mm)

Drawing Notes

- AC power, air and water required at one side wall as applicable.
- Room length, and pit location within length, must be determined by user to fit maximum truck length and rear overhang.
- Provide at least one man door for fire escape near rear of room, but not in rear wall because someone entering during a test could be struck by a stone flung from a tire. Provide ample fire extinguishers at each door and near driver.
- "Back-on, Drive-off" installation configuration preferred.

Everything you need to succeed

