



## TD-24-AC / Chassis Dynamometer

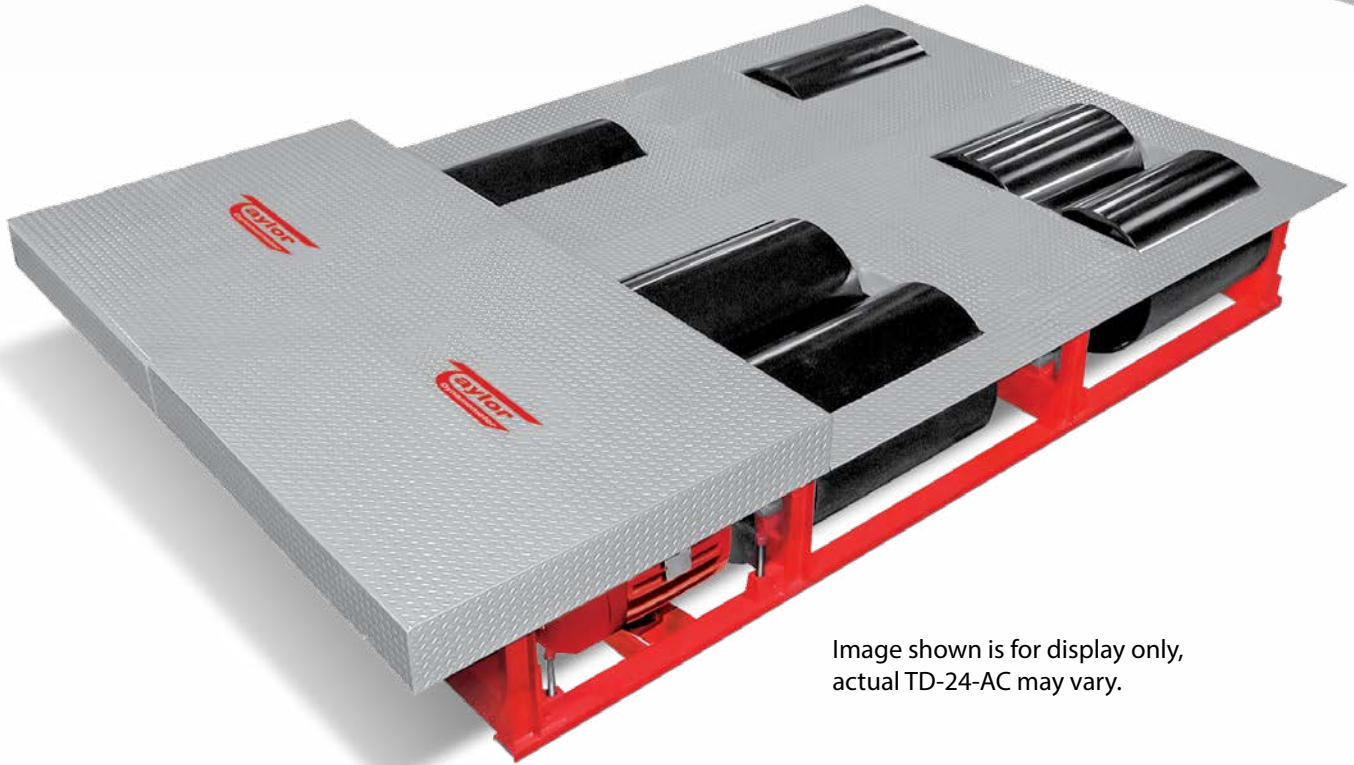


Image shown is for display only,  
actual TD-24-AC may vary.

### TD-24-AC Chassis Dynamometer

#### Specifications

Weight Capacity:	30,000 lb (13,608 kg) per axle
Roll Brakes:	Pneumatically-actuated disc
Shipping Weight:	39,400 lb (17,872 kg)
Capacity:	1,034 hp at 30 mph (771 kW at 48 kph)
Rolls:	24 by 34 in. (610 by 864 mm) 4 front fixed rolls, 2 rear rolls to accommodate axle spreads from 48 to 66 in. (1,219 to 1,676 mm) tandem centers
Pit Required Depth:	26 in. (660 mm)

#### Recommended Accessories

- Calibration Weights
- Stone Guard
- Exhaust Canopy
- Horizontal Exhaust System
- Water Recirculating System
- Guard Rail
- Wheel Chocks
- DynPro<sub>2</sub> Data Acquisition & Control System

**Everything you need to succeed**

# Optional Accessories



Wheel Chocks



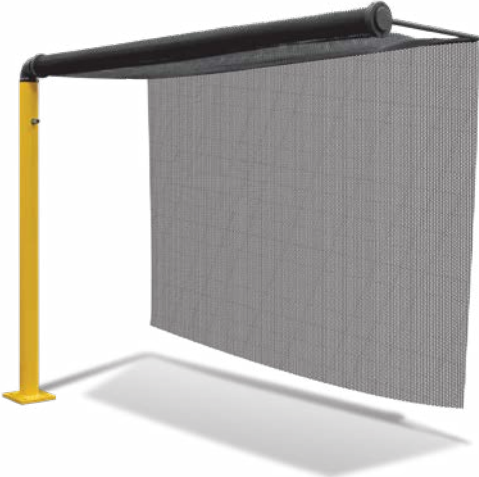
M-Tach and O-Tach



Optional Calibration Weights



Work Table



Rear Wheel Stone Guard

# Various Facility Support Systems and Services Available



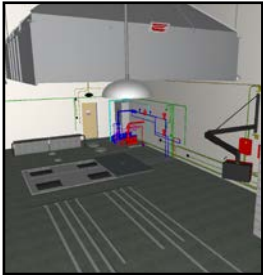
DynPro<sub>2</sub> Data Acquisition & Control System



Exhaust Hood



Water Recirculation

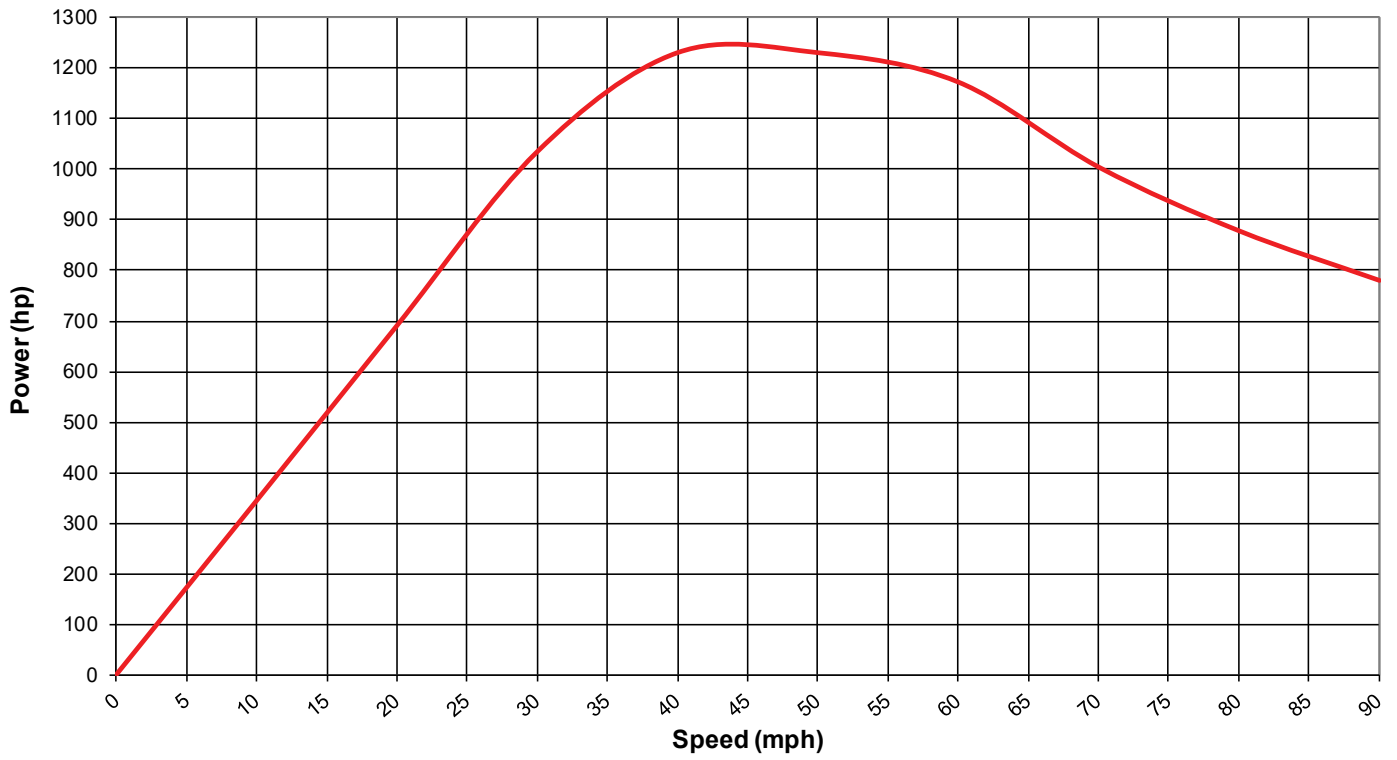


Design Services

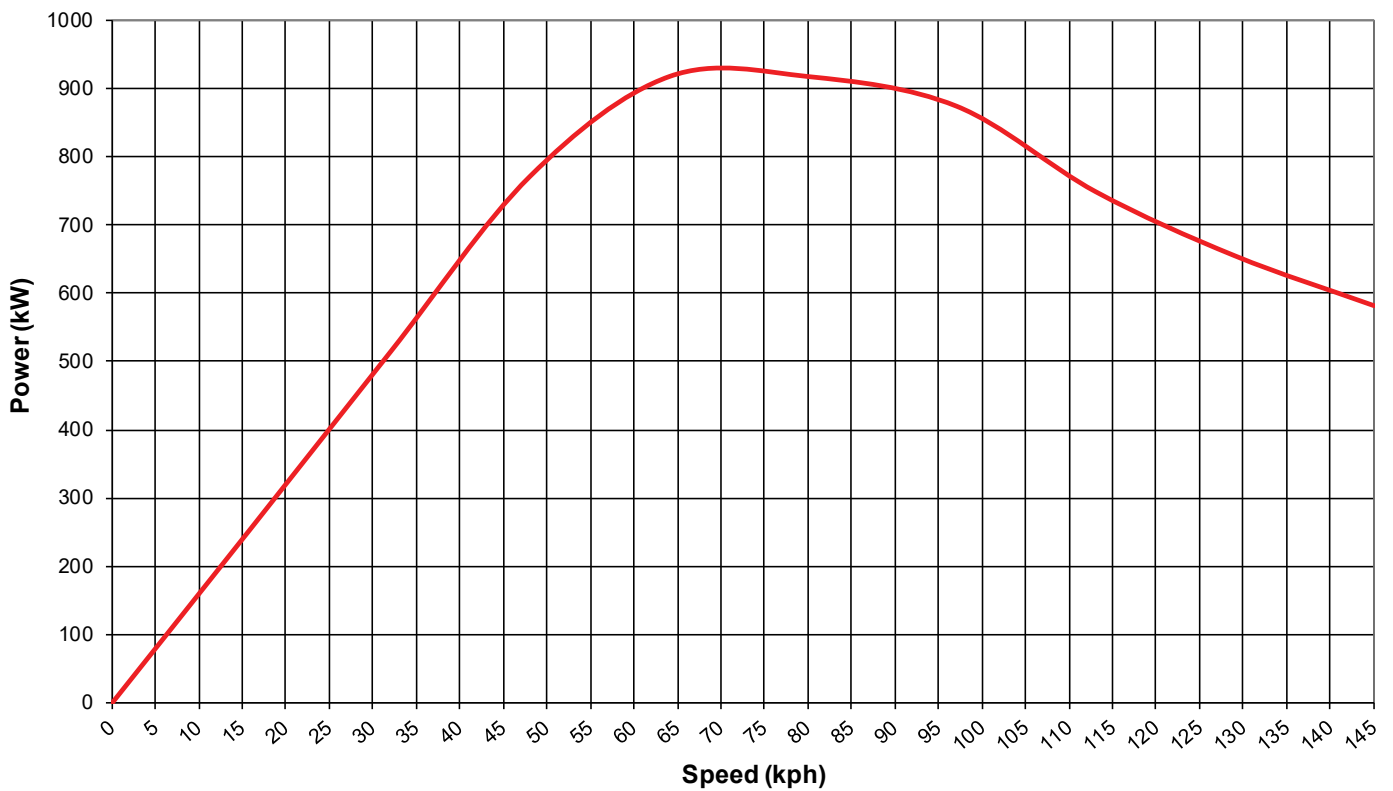


Commissioning, Start-up & Training

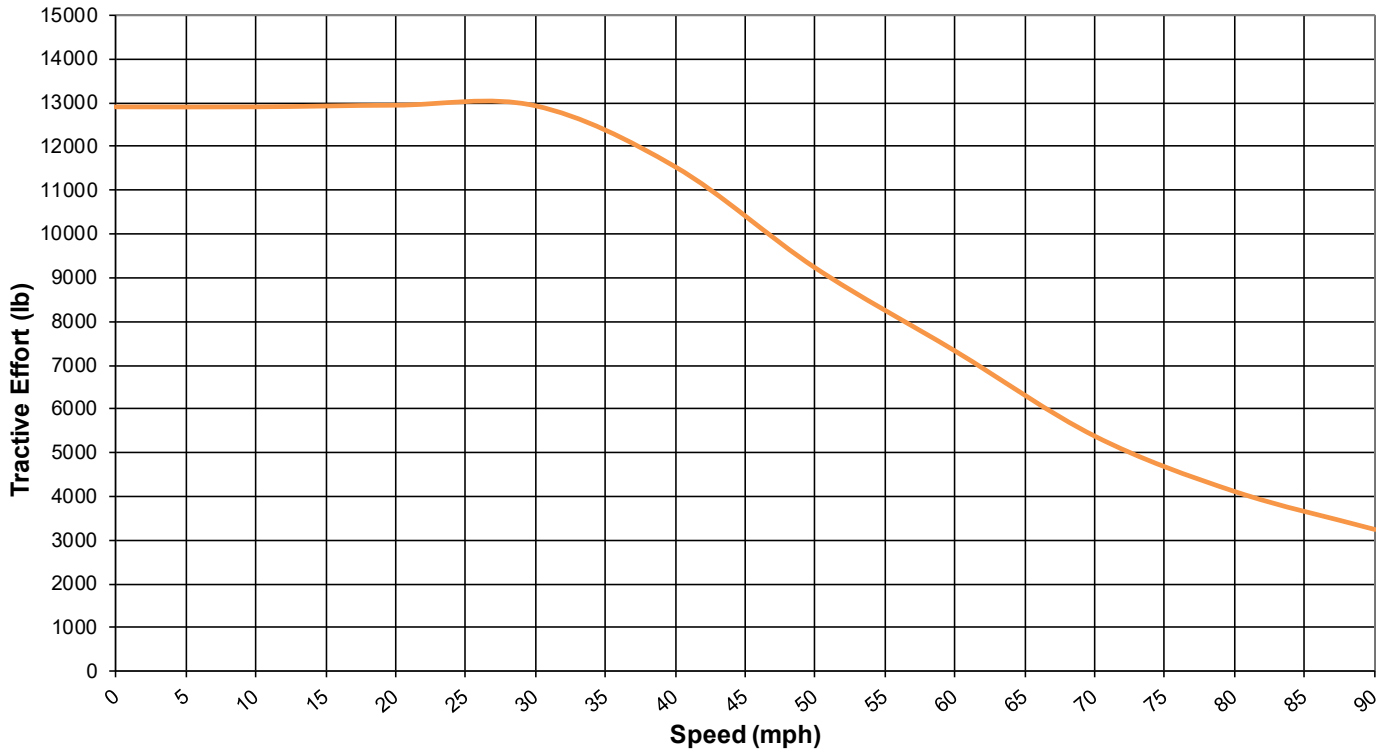
**TD-24-AC (US Customary)**



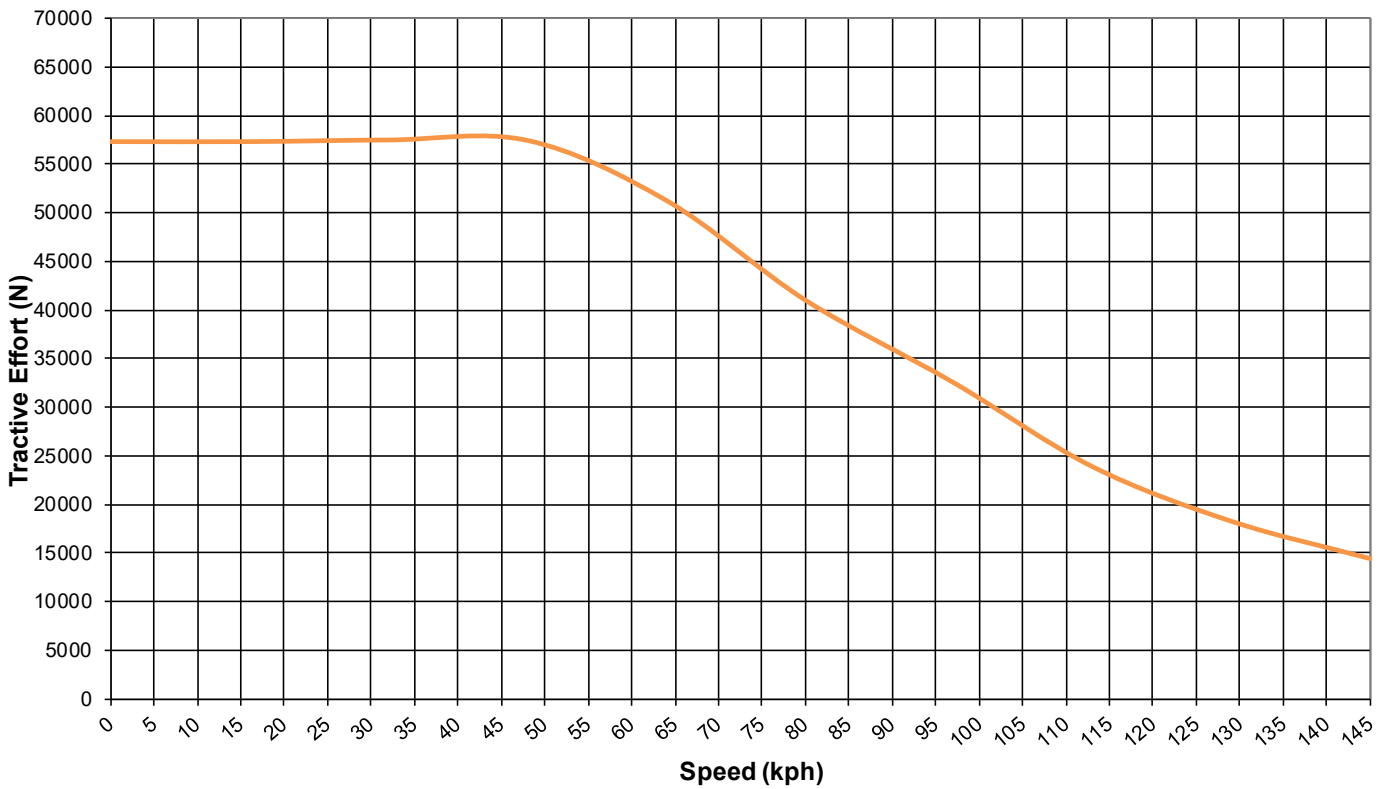
**TD-24-AC (S.I.)**

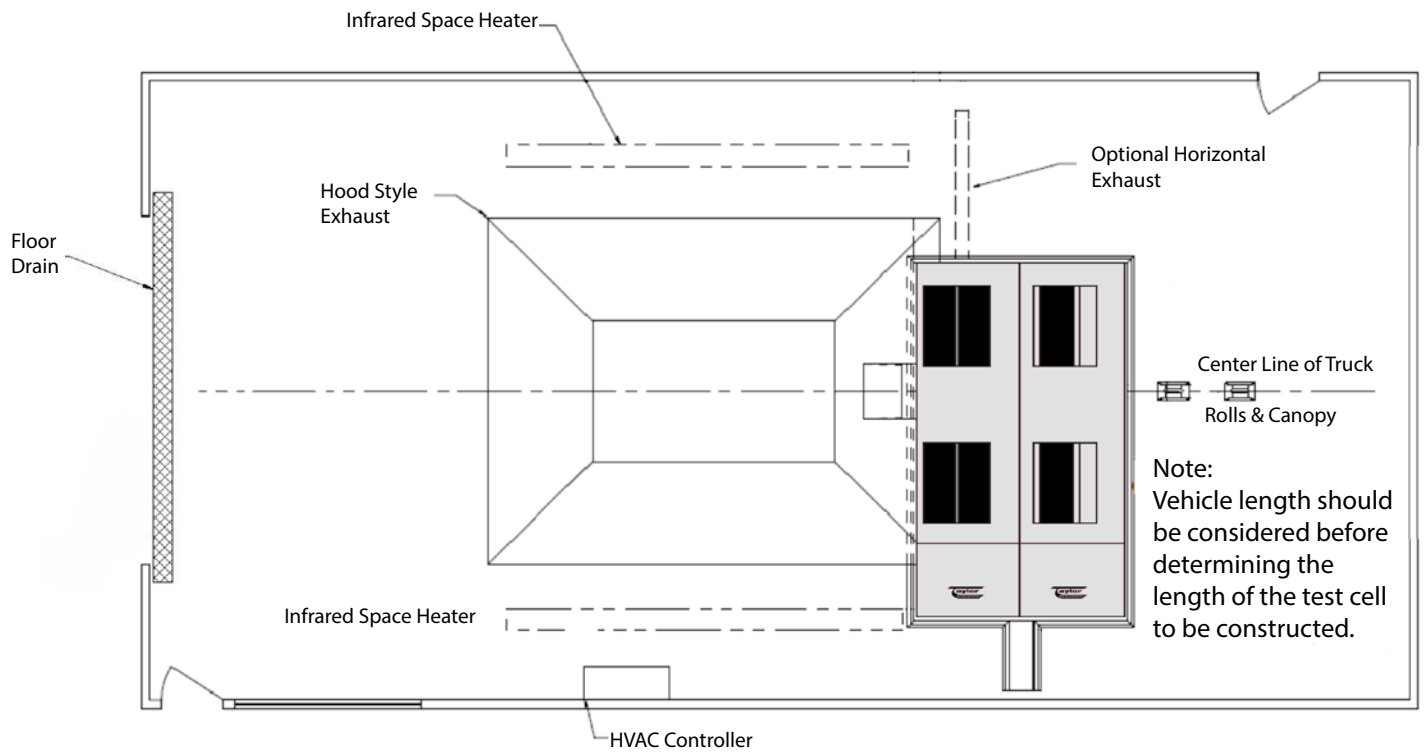


**TD-24-AC (US Customary)**



**TD-24-AC (S.I.)**





## Specifications

Weight Capacity:	30,000 lb (13,608 kg) per axle
Roll Brakes:	Pneumatically-actuated disc
Shipping Weight:	39,400 lb (17,872 kg)
Capacity:	1,034 hp at 30 mph (771 kW at 48 kph)
Rolls:	24 by 34 in. (610 by 864 mm) 4 front fixed rolls, 2 rear rolls to accommodate axle spreads from 48 to 66 in. (1,219 to 1,676 mm) tandem centers
Pit Required Depth:	26 in. (660 mm)

## Drawing Notes

- AC power, air and water required at one side wall as applicable.
- Room length, and pit location within length, must be determined by user to fit maximum truck length and rear overhang.
- Provide at least one man door for fire escape near rear of room, but not in rear wall because someone entering during a test could be struck by a stone flung from a tire. Provide ample fire extinguishers at each door and near driver.
- "Back-on, Drive-off" installation configuration preferred.

*Everything you need to succeed*

