



## CM-51 / Chassis Dynamometer



Image shown is for display only,  
actual CM-51 may vary.

## CM-51 Water Brake Chassis Dynamometer

### Specifications

Weight Capacity:	25,000 lb (11,340 kg) per axle
Roll Brakes:	pneumatically-actuated disc
Shipping Weight:	8,340 lb (3,783 kg)
Capacity:	1,100 hp at 80 mph (820 kW at 129 kph)
Rolls:	20 by 36 in. (508 by 915 mm) long, 4 front fixed rolls, 2 rear rolls fixed to accommodate axle spreads from 48 to 60 in. (1,219 to 1,524 mm) tandem centers
Pit Required Depth:	27 in. (686 mm)

### Recommended Accessories

- Calibration Weights
- Stone Guard
- Exhaust Canopy
- Horizontal Exhaust System
- Water Recirculating System
- Guard Rail
- Wheel Chocks
- DynPro<sub>2</sub> Data Acquisition & Control System

**Everything you need to succeed**

# Optional Accessories



Wheel Chocks



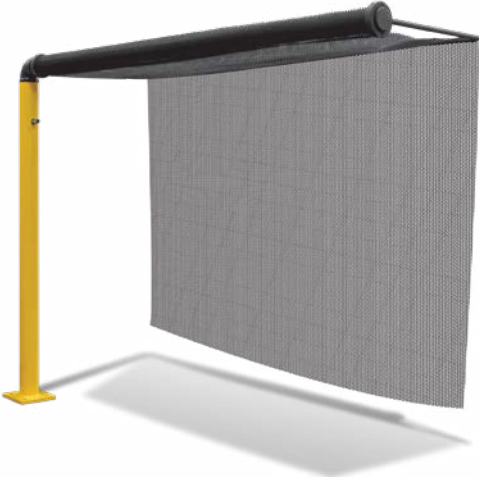
M-Tach and O-Tach



Optional Calibration Weights



Work Table



Rear Wheel Stone Guard

# Various Facility Support Systems and Services Available



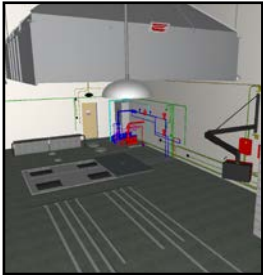
DynPro<sub>2</sub> Data Acquisition & Control System



Exhaust Hood



Water Recirculation

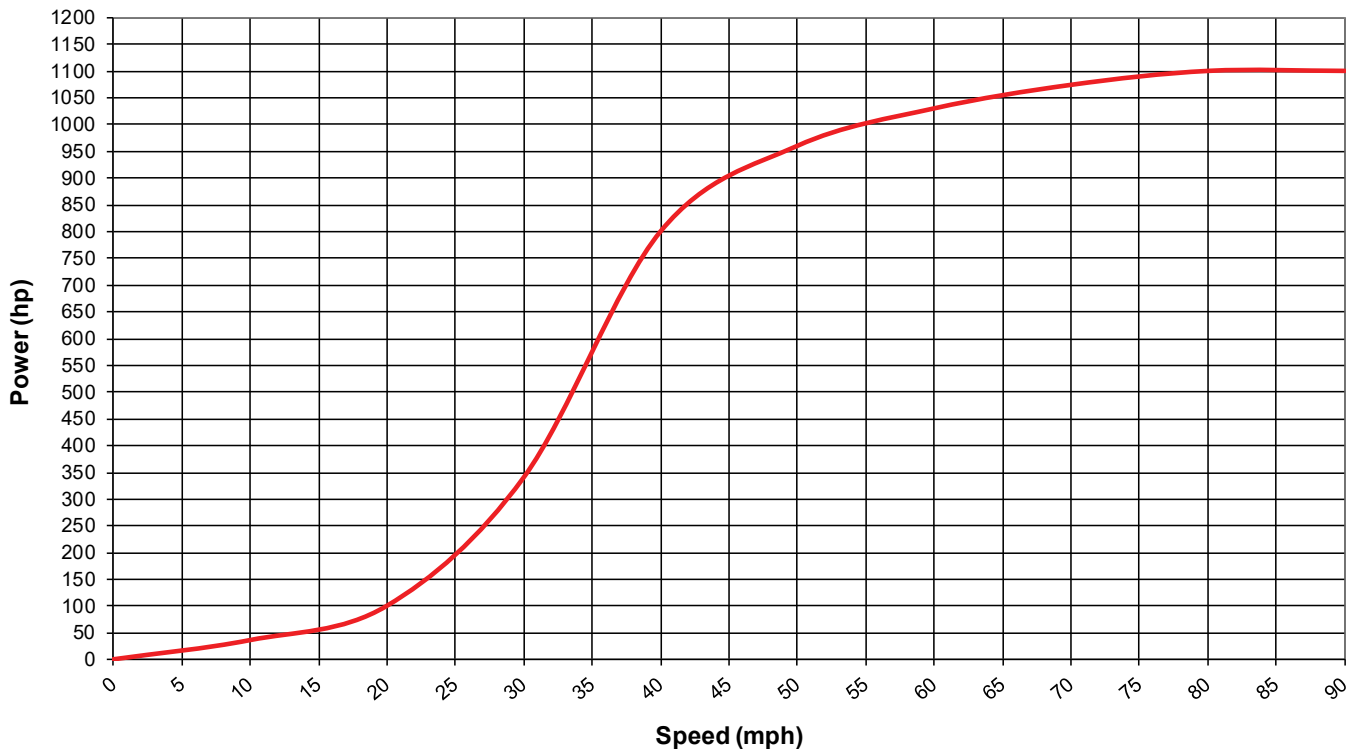


Design Services

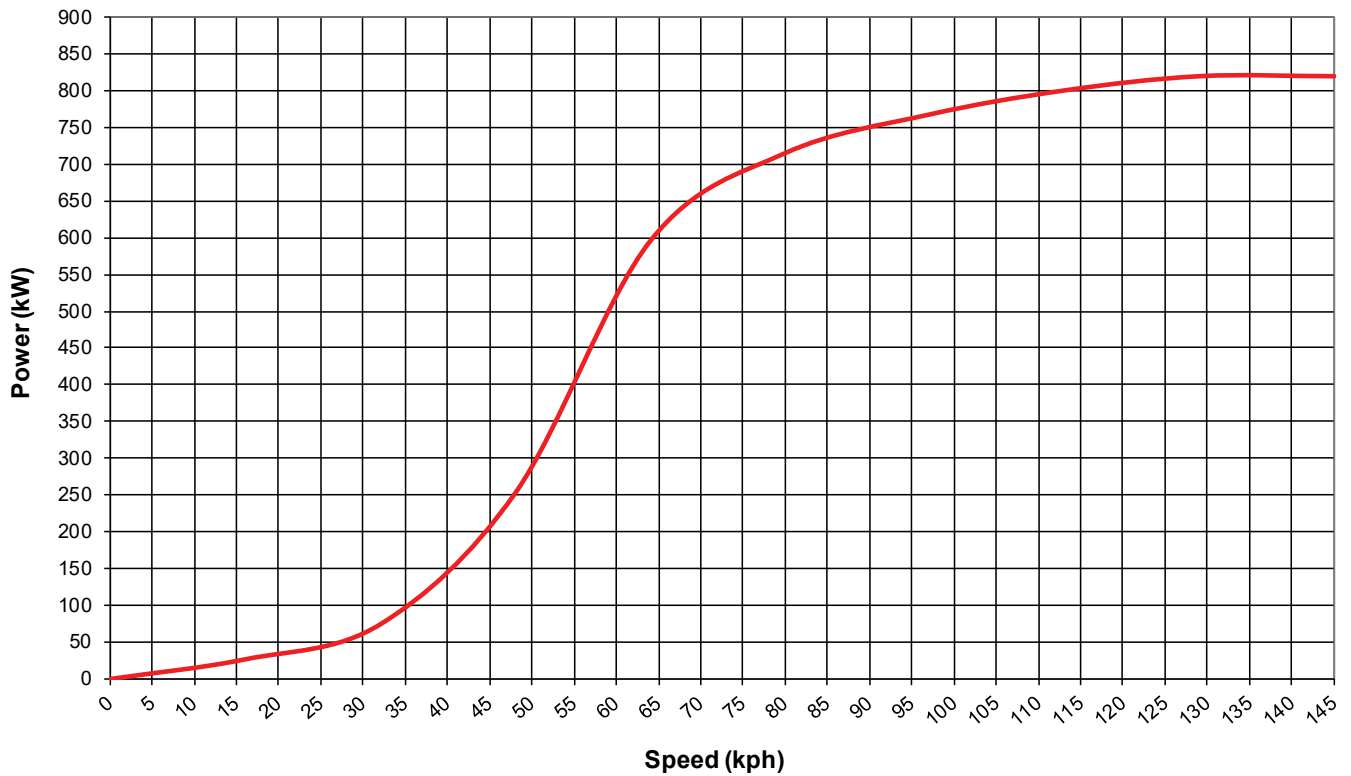


Commissioning, Start-up & Training

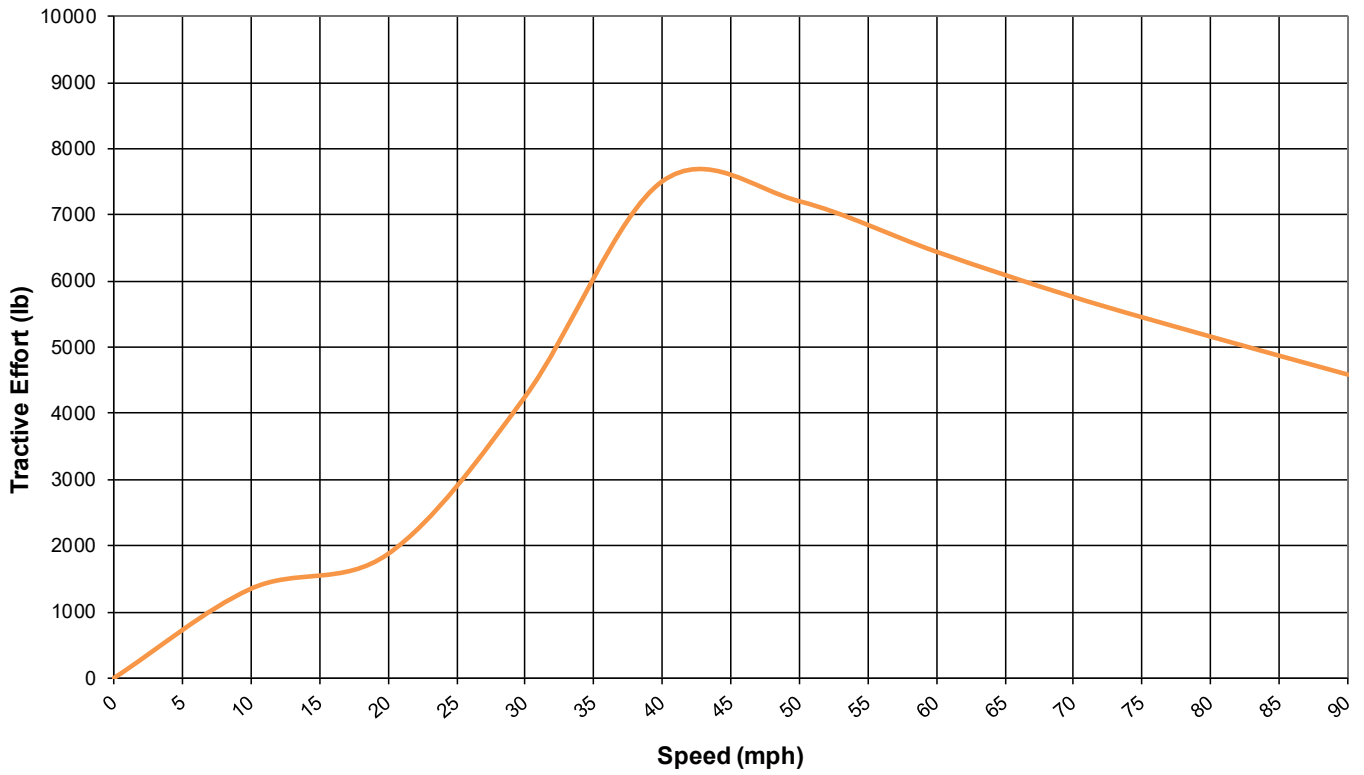
### CM-51 (US Customary)



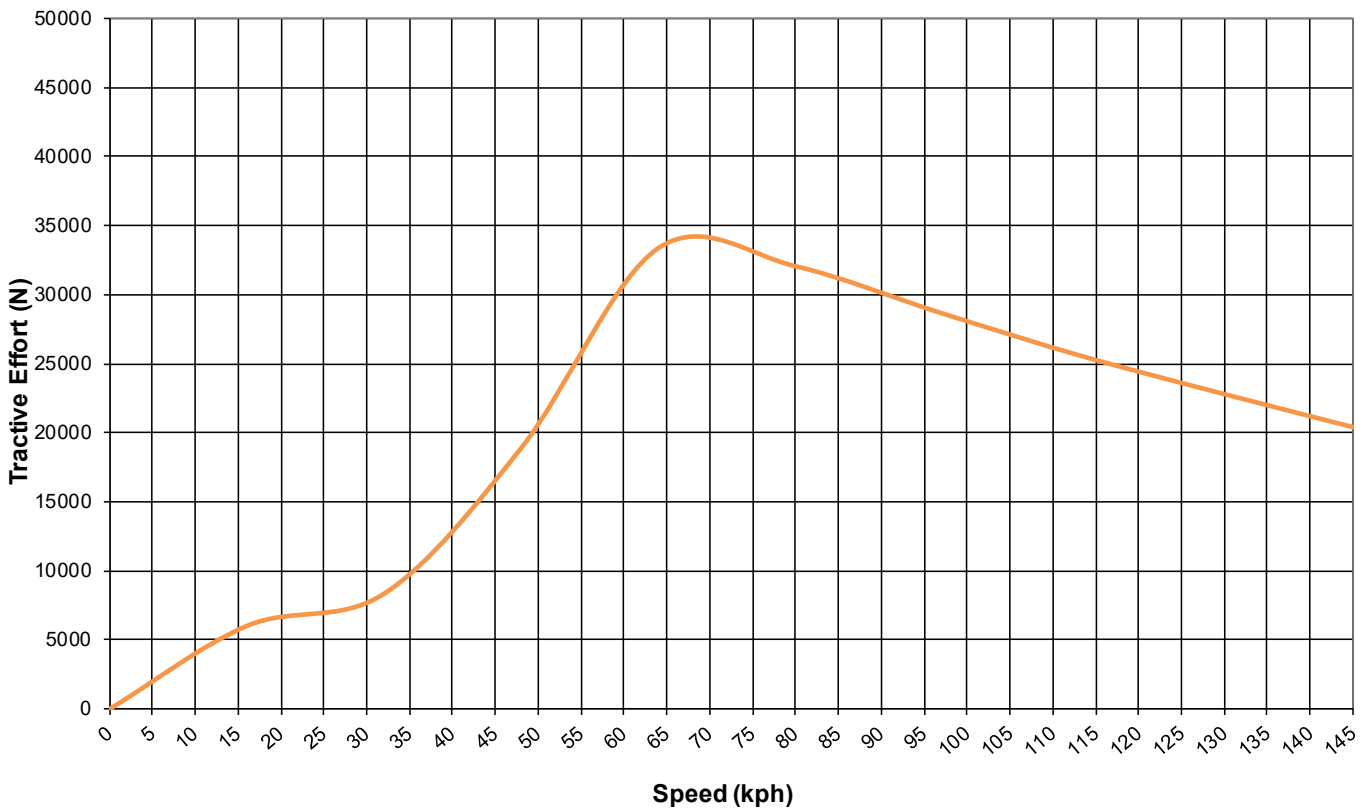
### CM-51 (S.I.)

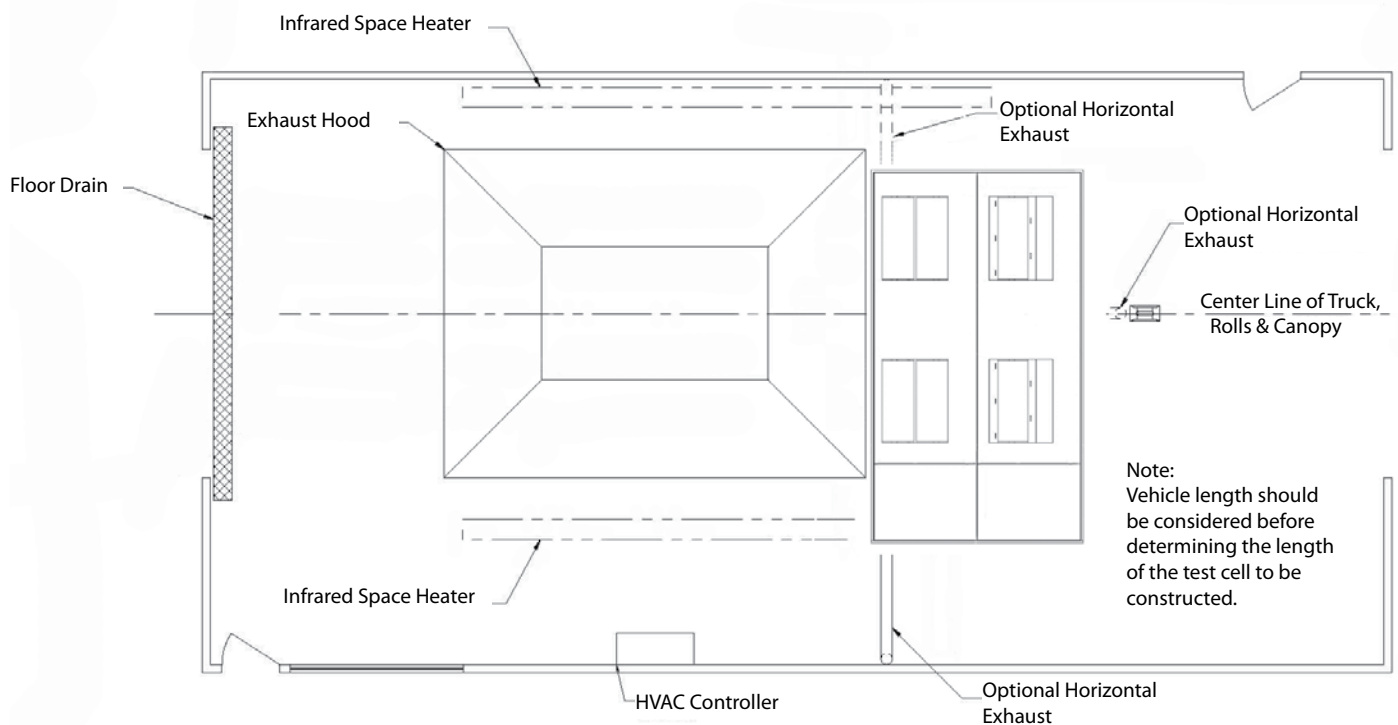


### CM-51 (US Customary)



### CM-51 (S.I.)





## Specifications

Weight Capacity:	25,000 lb (11,340 kg) per axle
Roll Brakes:	pneumatically-actuated disc
Shipping Weight:	8,340 lb (3,783 kg)
Capacity:	1,100 hp at 80 mph (820 kW at 129 kph)
Rolls:	20 by 36 in. (508 by 915 mm) long, 4 front fixed rolls, 2 rear rolls fixed to accommodate axle spreads from 48 to 60 in. (1,219 to 1,524 mm) tandem centers
Pit Required Depth:	27 in. (686 mm)

## Drawing Notes

- AC power, air and water required at one side wall as applicable.
- Room length, and pit location within length, must be determined by user to fit maximum truck length and rear overhang.
- Provide at least one man door for fire escape near rear of room, but not in rear wall because someone entering during a test could be struck by a stone flung from a tire. Provide ample fire extinguishers at each door and near driver.
- "Back-on, Drive-off" installation configuration preferred.

**Everything you need to succeed**

