



## CM-51SR-EC / Chassis Dynamometer



Image shown is for display only,  
actual CM-51SR-EC may vary.

## CM-51SR-EC Eddy Current Chassis Dynamometer

### Specifications

Weight Capacity:	25,000 lb (11,340 kg) per axle
Roll Brakes:	pneumatically-actuated disc
Shipping Weight:	5,100 lb (2,312 kg)
Capacity:	311 hp at 45 mph (232 kW at 72 kph)
Rolls:	20 by 36 in. (508 by 915 mm) long, 2 fixed
Pit Required Depth:	25 in. (635 mm)

### Recommended Accessories

- Calibration Weight Kit
- Rear Wheel Stone Guard
- Exhaust Hood
- Horizontal Exhaust System
- Guard Rail
- Wheel Chocks
- Workstation or Work Table

***Everything you need to succeed***

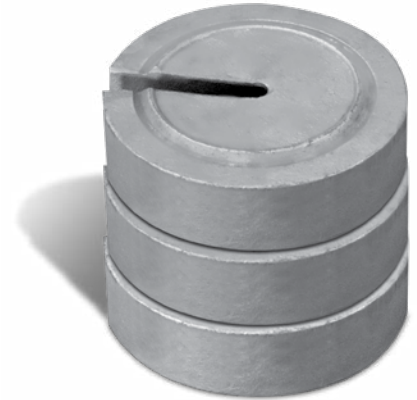
## Optional Accessories



Wheel Chocks



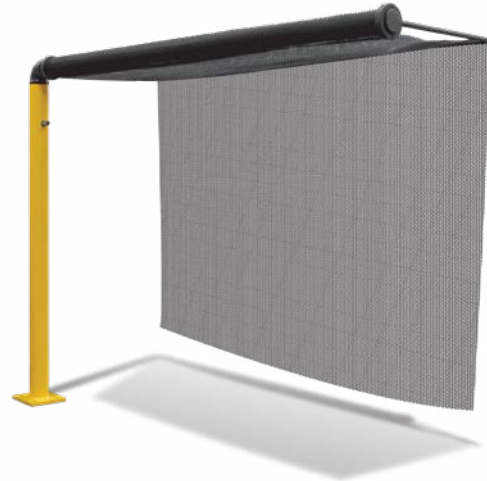
M-Tach and O-Tach



Optional Calibration Weights



Work Table



Rear Wheel Stone Guard

## Various Facility Support Systems and Services Available



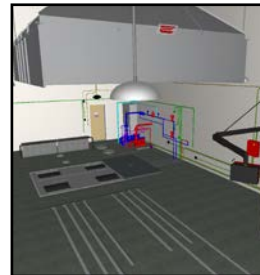
DynPro<sub>2</sub> Data Acquisition & Control System



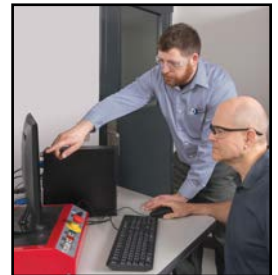
Exhaust Hood



Water Recirculation

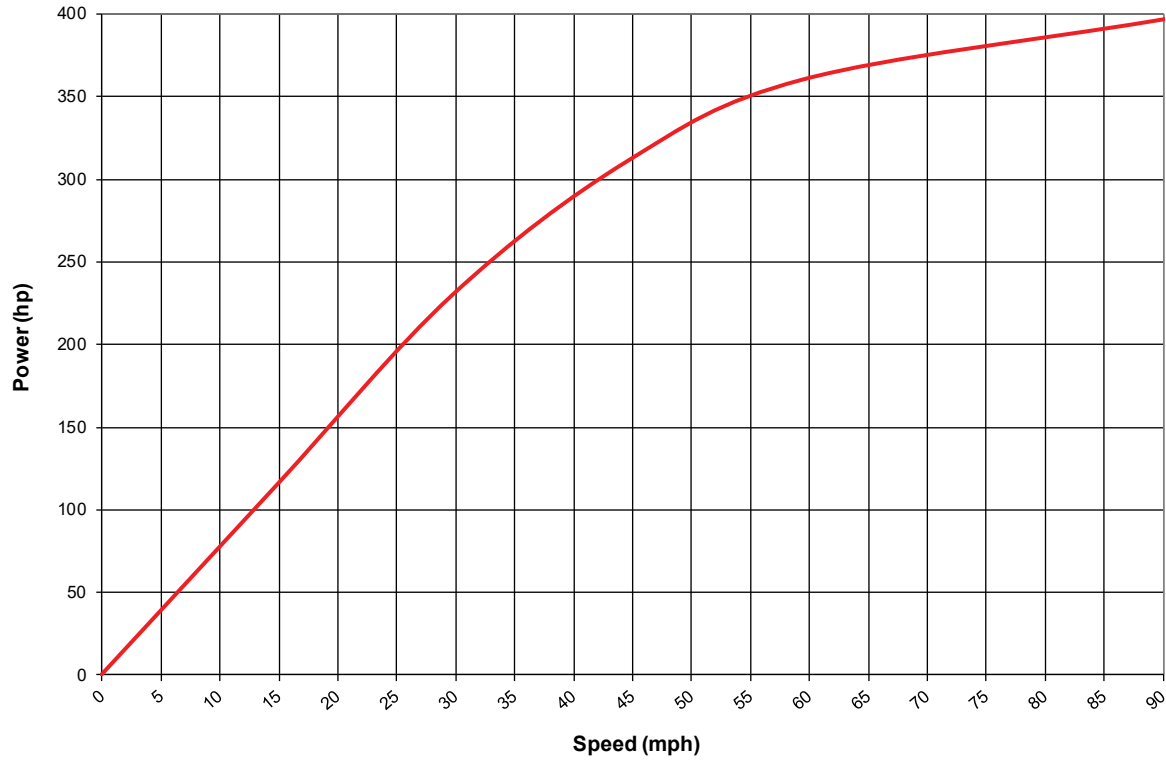


Design Services

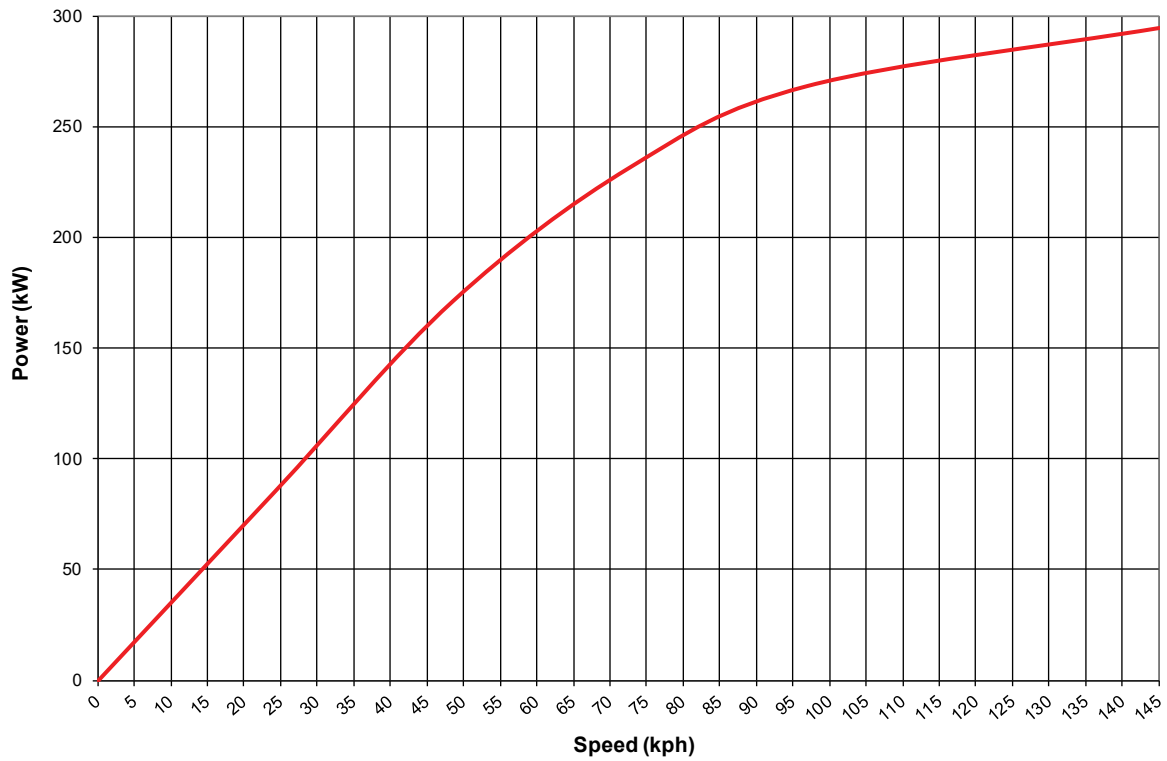


Commissioning, Start-up & Training

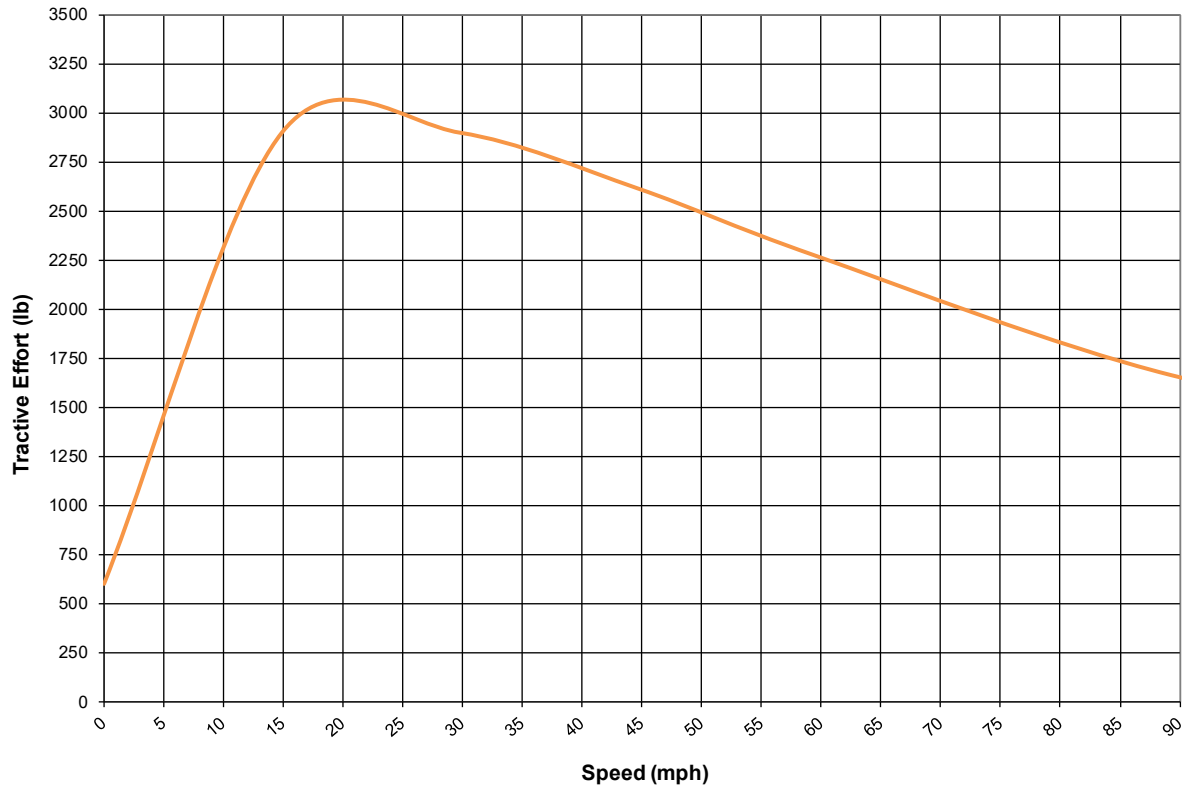
**CM-51SR-EC (US Customary)**



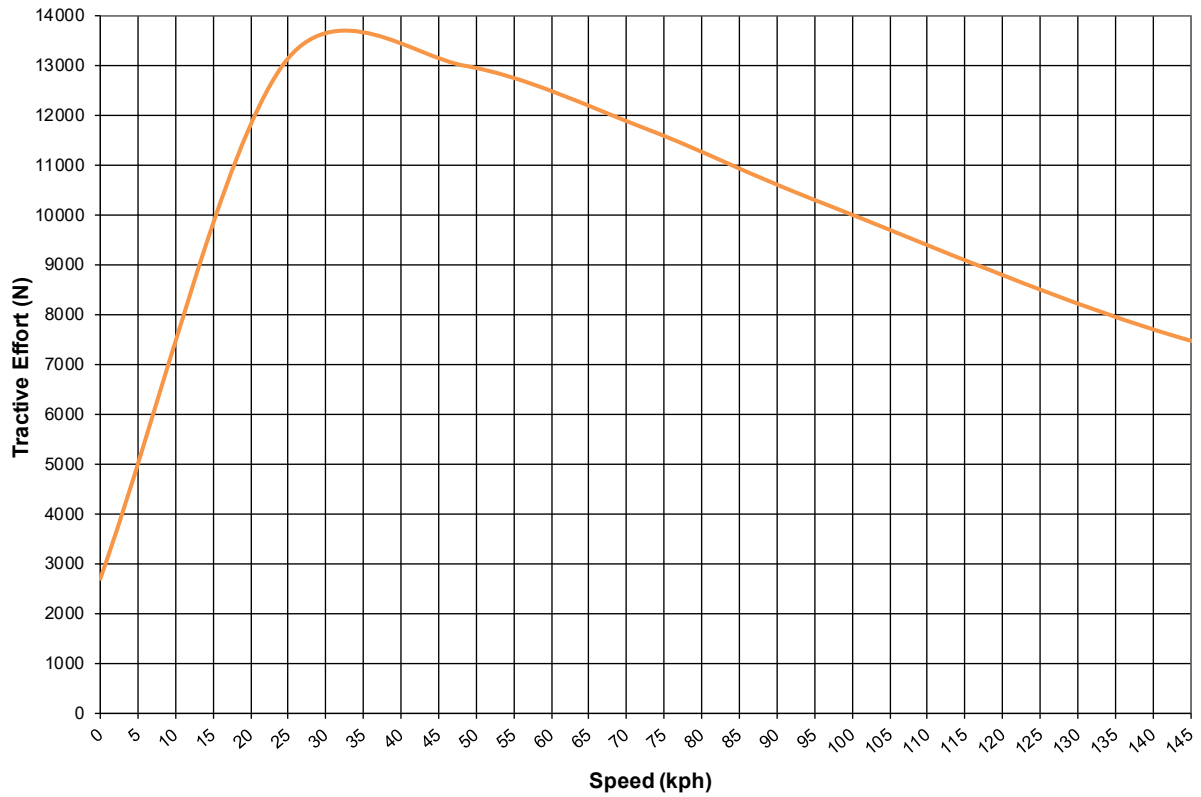
**CM-51SR-EC (S.I.)**

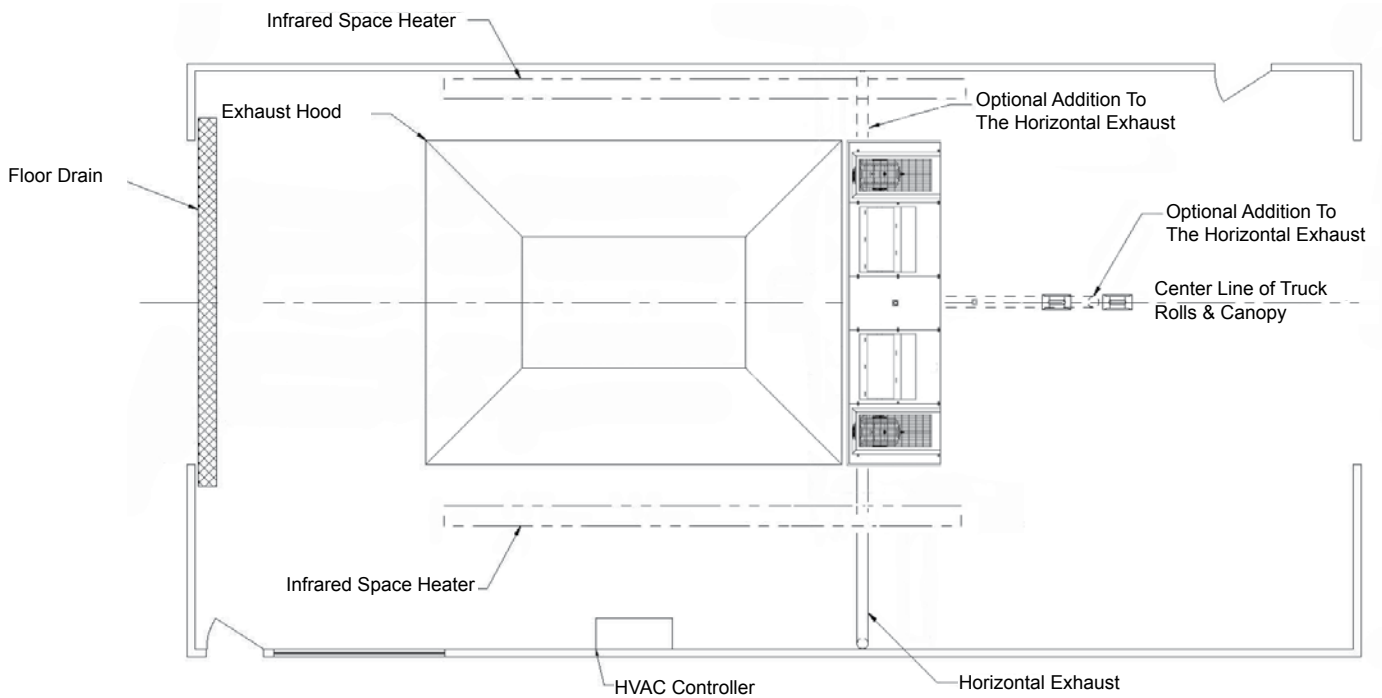


### CM-51SR-EC (US Customary)



### CM-51SR-EC (S.I.)





## Specifications

Weight Capacity:	25,000 lb (11,340 kg) per axle
Roll Brakes:	pneumatically-actuated disc
Shipping Weight:	5,100 lb (2,312 kg)
Capacity:	311 hp at 45 mph (232 kW at 72 kph)
Rolls:	20 by 36 in. (508 by 915 mm) long, 2 fixed
Pit Required Depth:	25 in. (635 mm)

## Drawing Notes

- AC power, air and water required at one side wall as applicable.
- Room length, and pit location within length, must be determined by user to fit maximum truck length and rear overhang.
- Provide at least one man door for fire escape near rear of room, but not in rear wall because someone entering during a test could be struck by a stone flung from a tire. Provide ample fire extinguishers at each door and near driver.
- "Back-on Drive-off" installation configuration preferred.

*Everything you need to succeed*

