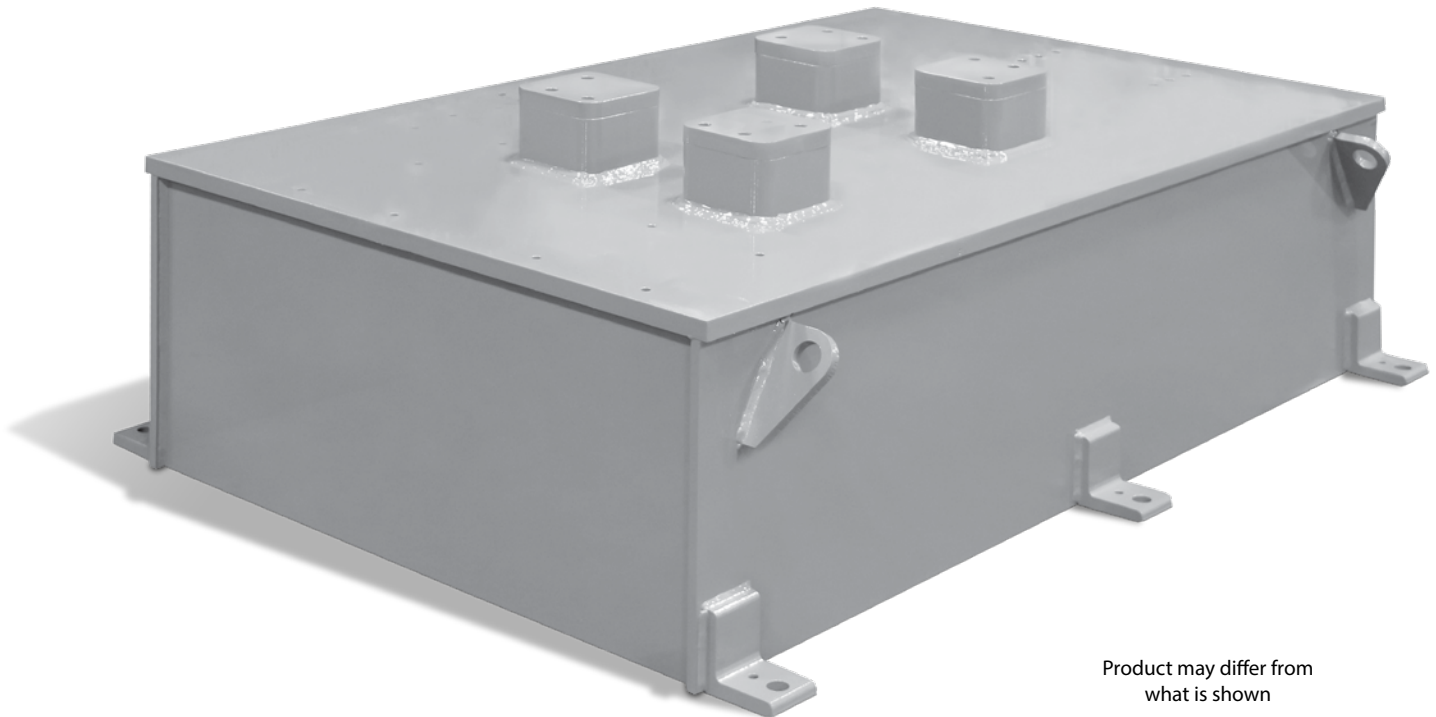




## Sub-Base Kits / Engine Dynamometer



Product may differ from  
what is shown

Taylor offers Sub-Base Kits for use with all of our engine dynamometer models. The standard kit provides dynamometer shaft centerline heights of 28, 36 or 45 in. (711, 914 or 1118 mm) depending on the typical engine requirements for the model of engine dynamometer being selected. We also offer custom dynamometer shaft centerline heights to meet special or existing equipment requirements. A Taylor made Sub-Base Kit eliminates the need for a concrete pedestal and places the dynamometer at the desired centerline height which serves to greatly simplify the installation of the dynamometer by allowing for a flat floor / isolation pad.

*Everything you need to succeed*



3602 West Wheelhouse Road, Milwaukee, Wisconsin 53208 U.S.A.  
(414) 755-0040 [www.taylordyno.com](http://www.taylordyno.com)

SMS2541v002