



DL6K / Engine Dynamometer

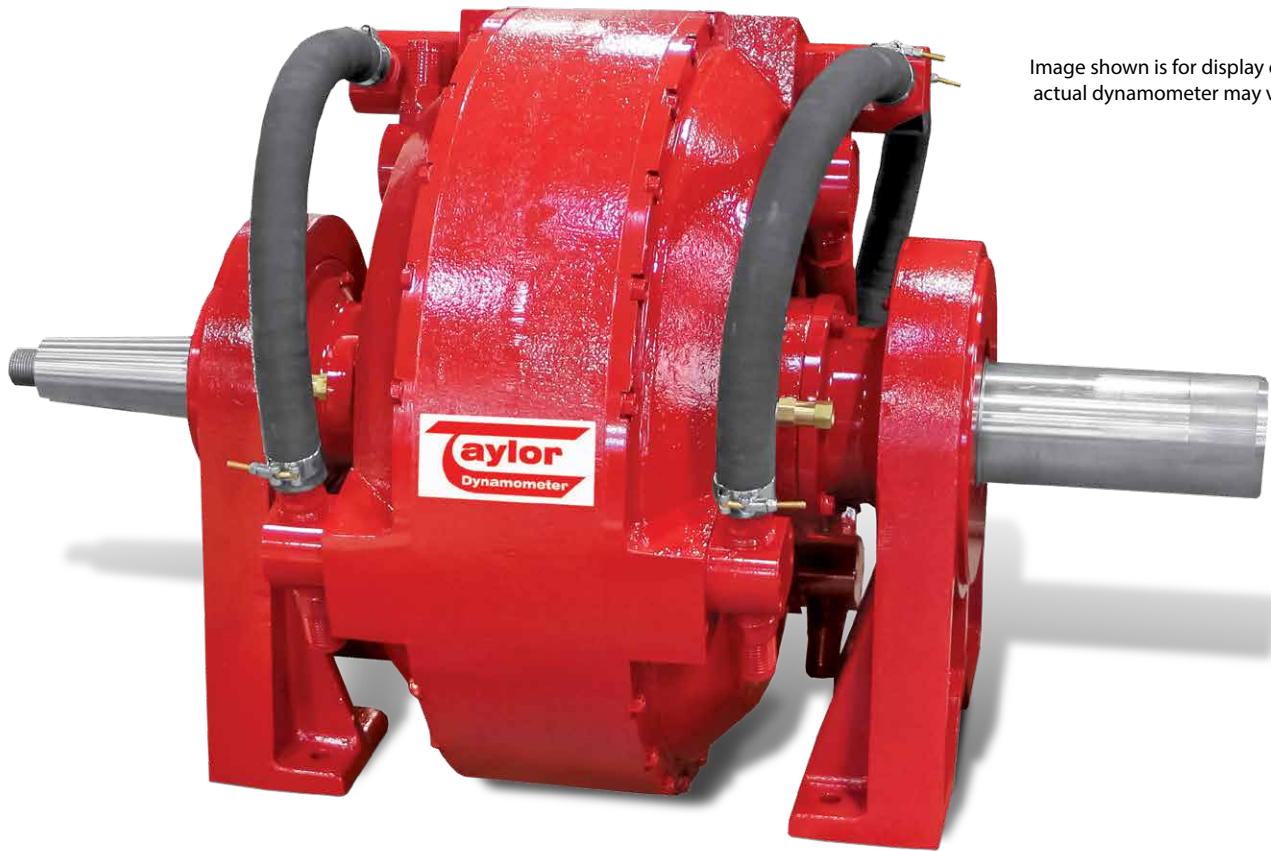


Image shown is for display only, actual dynamometer may vary.

DL6K Water Brake Dynamometer

Specifications

Power:	6,000 hp (4,474 kW)
Torque:	49,700 lb-ft (67,384 Nm)
Speed:	2,550 rpm
Water Use*:	436 gpm (1,650.4 lpm)
Inertia Value**:	311.4 lb·ft ² (13.12 kg·m ²)
Shipping Weight:	3,450 lb (1,565 kg)

*No Cooling System

**With Companion Flange

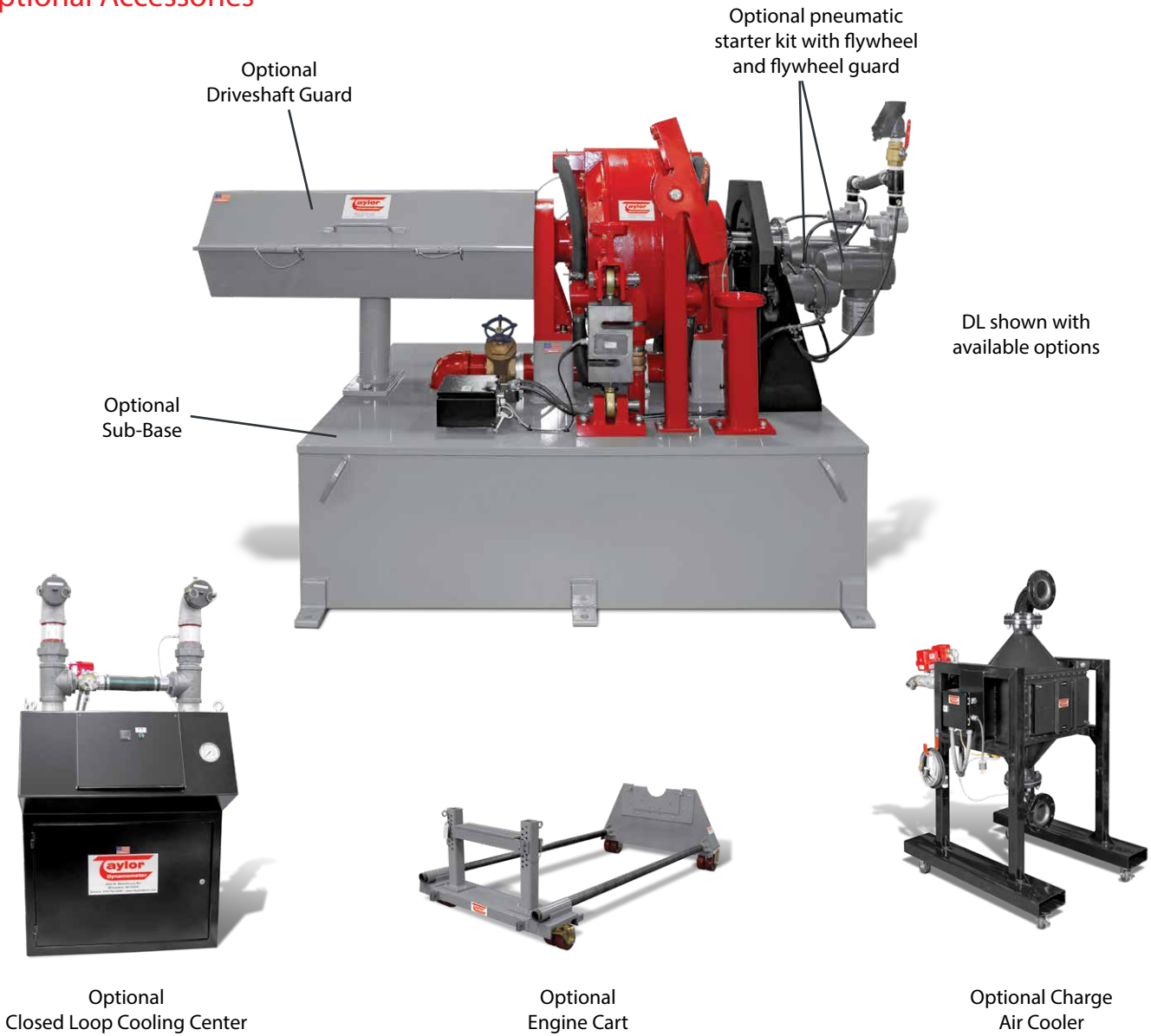
Recommended Accessories

- Driveshaft
- Driveshaft Guard
- Adapter Plate Kit
- Engine Cart
- Closed Loop Cooling Center
- Air Starter
- Throttle Control
- Water Recirculating System

For overhung loads, such as a belt or gear drive, please contact Taylor Dynamometer to ensure that the system will meet the required performance needs.

Total Test Success

Optional Accessories



Various Facility Support Systems and Services Available



Bulk Fuel Storage and Distribution



Coolant Storage and Distribution



Water Recirculation

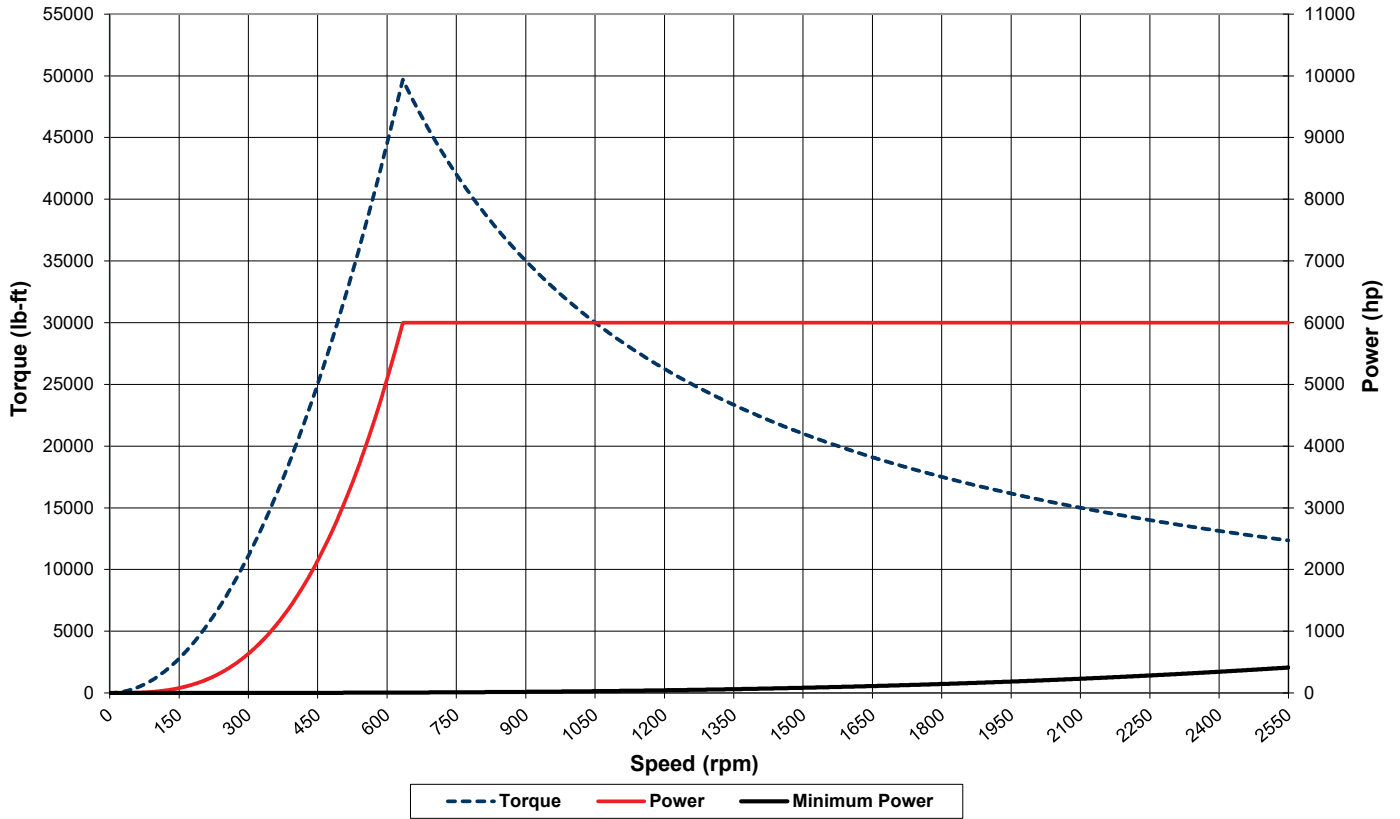


Design Services

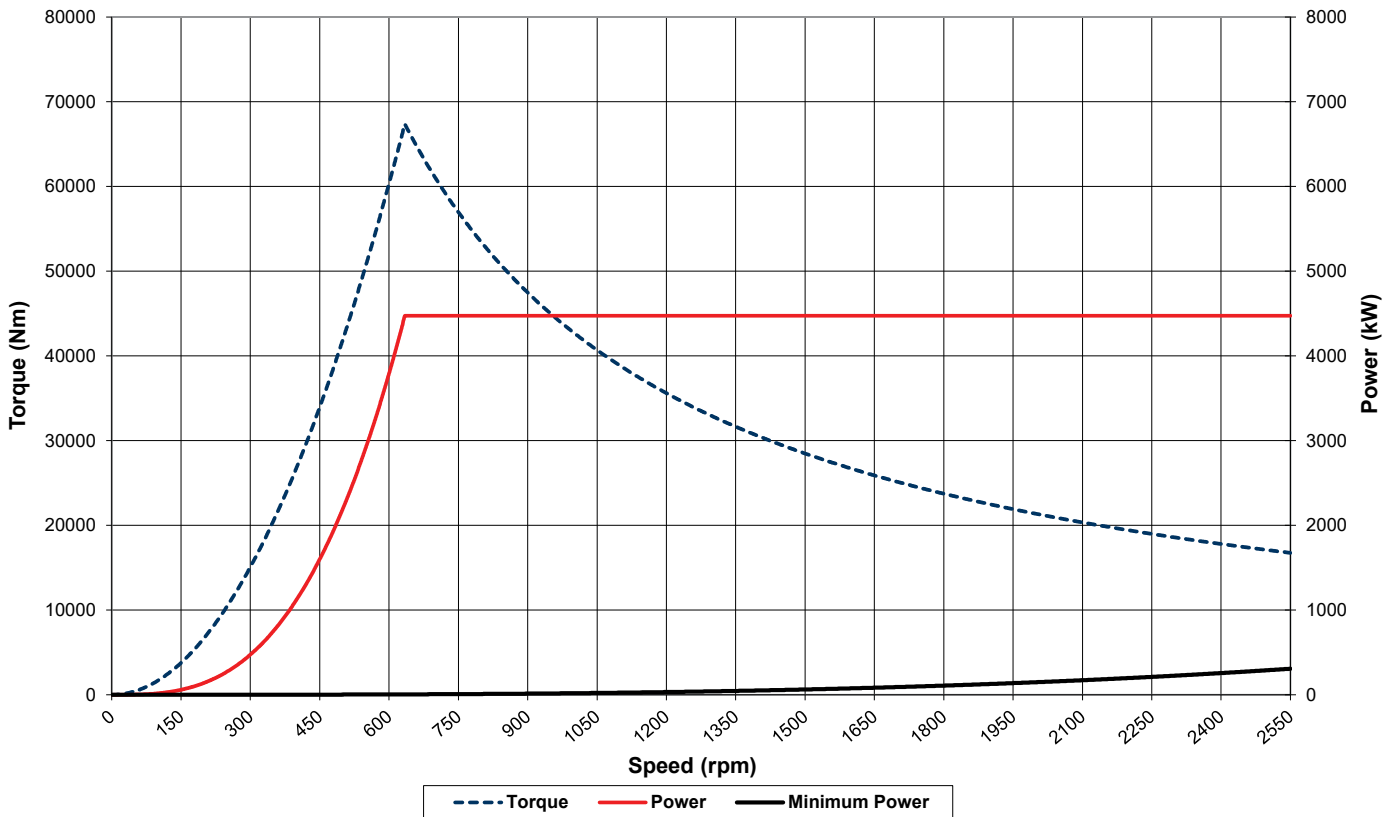


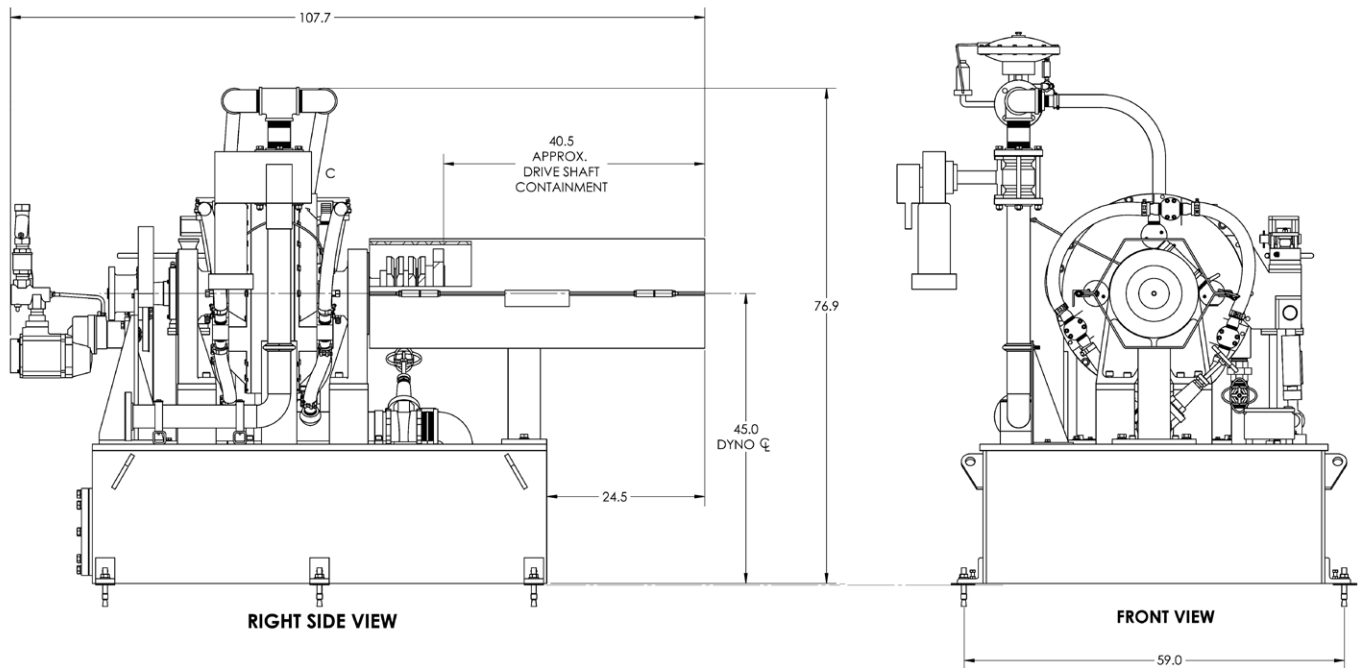
Commissioning, Start-up & Training

DL6K (US Customary)



DL6K (S.I.)





Specifications

Power:	6,000 hp (4,474 kW)
Torque:	49,700 lb-ft (67,384 Nm)
Speed:	2,550 rpm
Water Use*:	436 gpm (1,650.4 lpm)
Inertia Value**:	311.4 lb·ft ² (13.12 kg·m ²)
Shipping Weight:	3,450 lb (1,565 kg)

*No Cooling System

**With Companion Flange

As a safety precaution, Taylor Dynamometer recommends a torsional analysis to uncover any potential torsional problems that exist for each application. This analysis will identify any torsional issues (frequencies) that should be fixed prior to operation. Excessive linear vibration may also create problems that must be mitigated for continued operation. It is the customer's responsibility to ensure that these vibration issues are addressed upon application of the dynamometer. Equipment failures attributed to linear or torsional vibration are not warrantable.

Everything you need to succeed



3602 West Wheelhouse Road, Milwaukee, Wisconsin 53208 U.S.A.
 (414) 755-0040 www.taylordyno.com

SMS2039v005