



DE400 / Engine Dynamometer



DE400 Eddy Current Dynamometer

Specifications

Power: 536 hp (400 kW)

Torque: 1,475 ft-lb (2,000 Nm)

Speed: 8,000 rpm

Water Use: 74 gpm (4.7 lps) (No Cooling System)

Shipping Weight: 4,012 lb (1,820 kg)

Inertia Value: 26 ft² · lb (1.107 m² · kg)

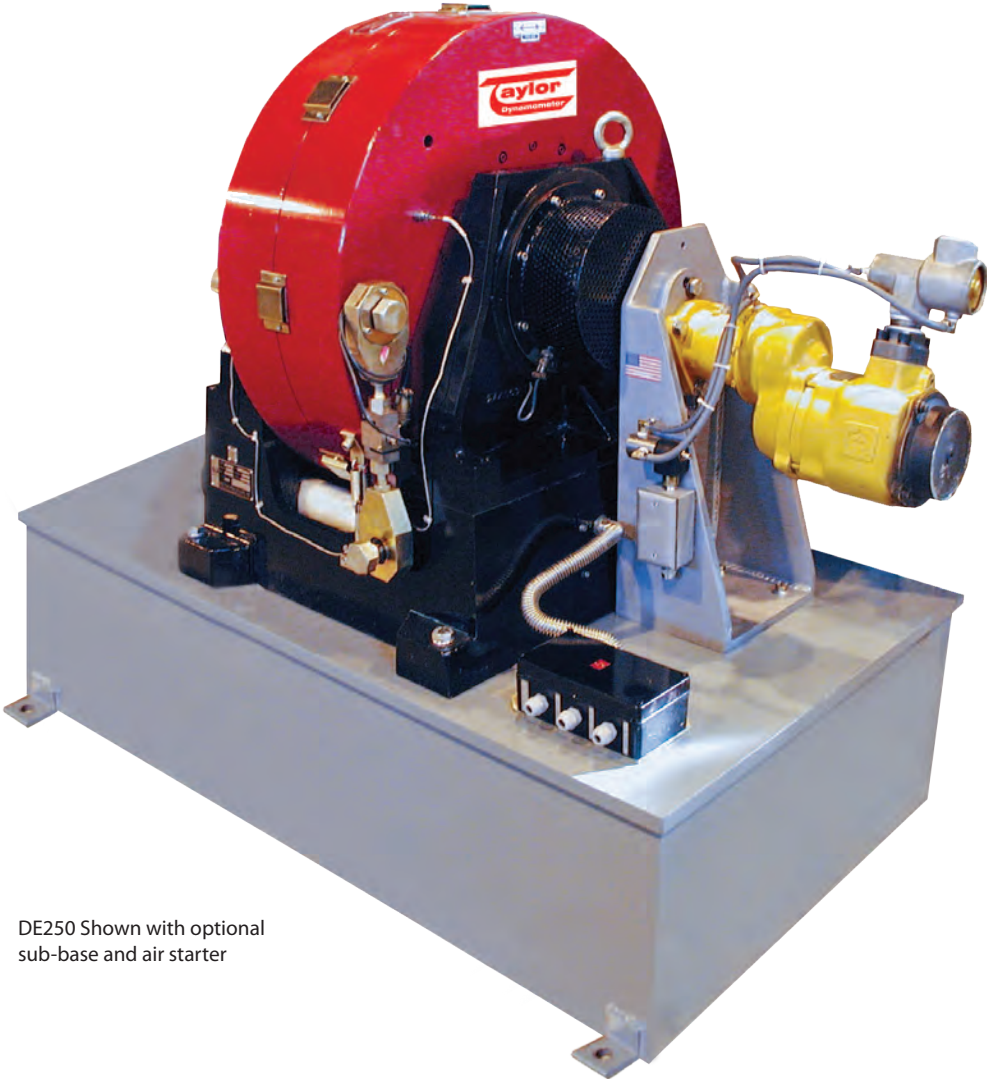
Rotation: Dynamometer can be operated in both directions of rotation

Recommended Accessories

- Driveshaft
- Driveshaft Guard
- Adapter Plate Kit
- Base Kit
- Engine Cart
- Cooling Column
- Charge Air Cooler
- Water Recirculating System

Total Test Success

Optional Accessories



DE250 Shown with optional sub-base and air starter

Optional Cooling Column



Optional Engine Cart (Engine not Included)



Optional Driveshaft Cover



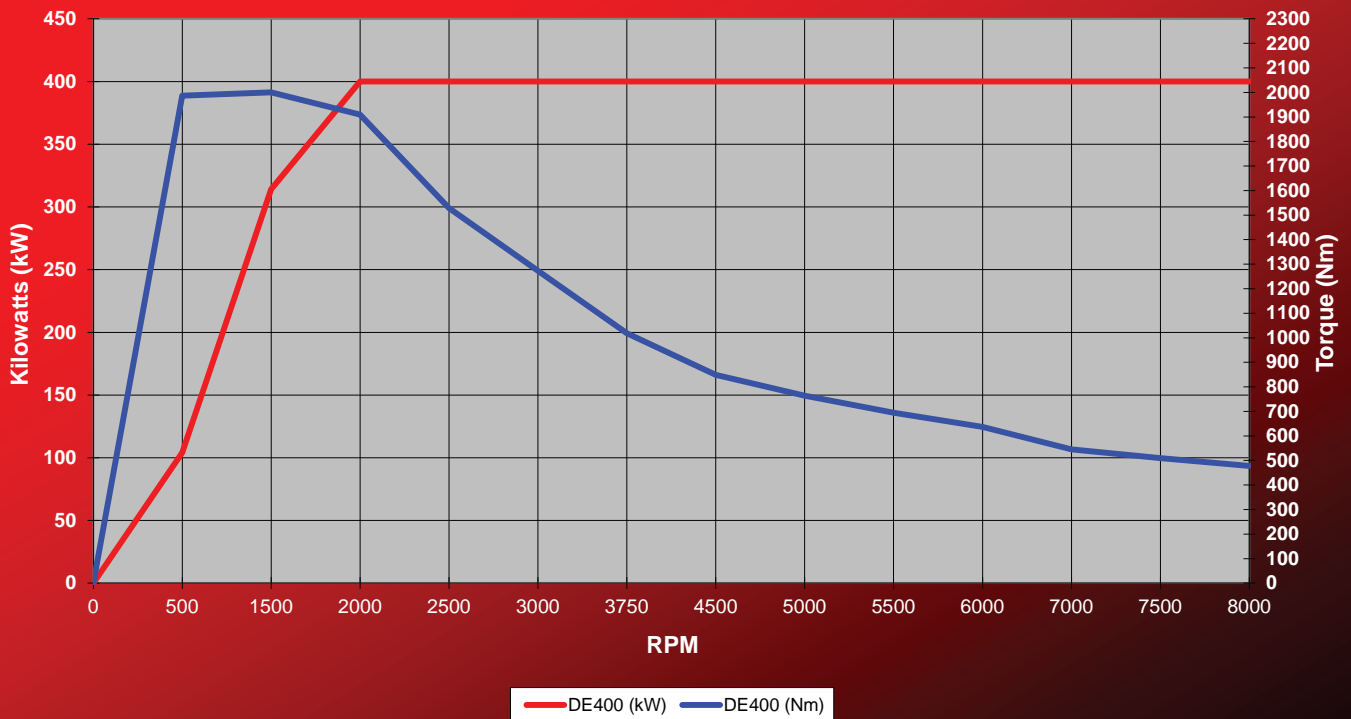
Optional Charge Air Cooler

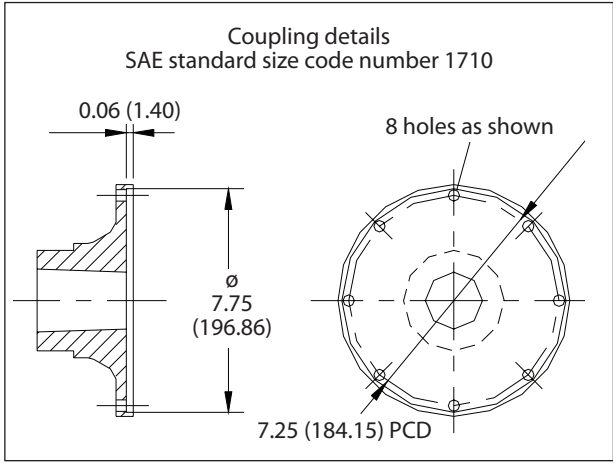
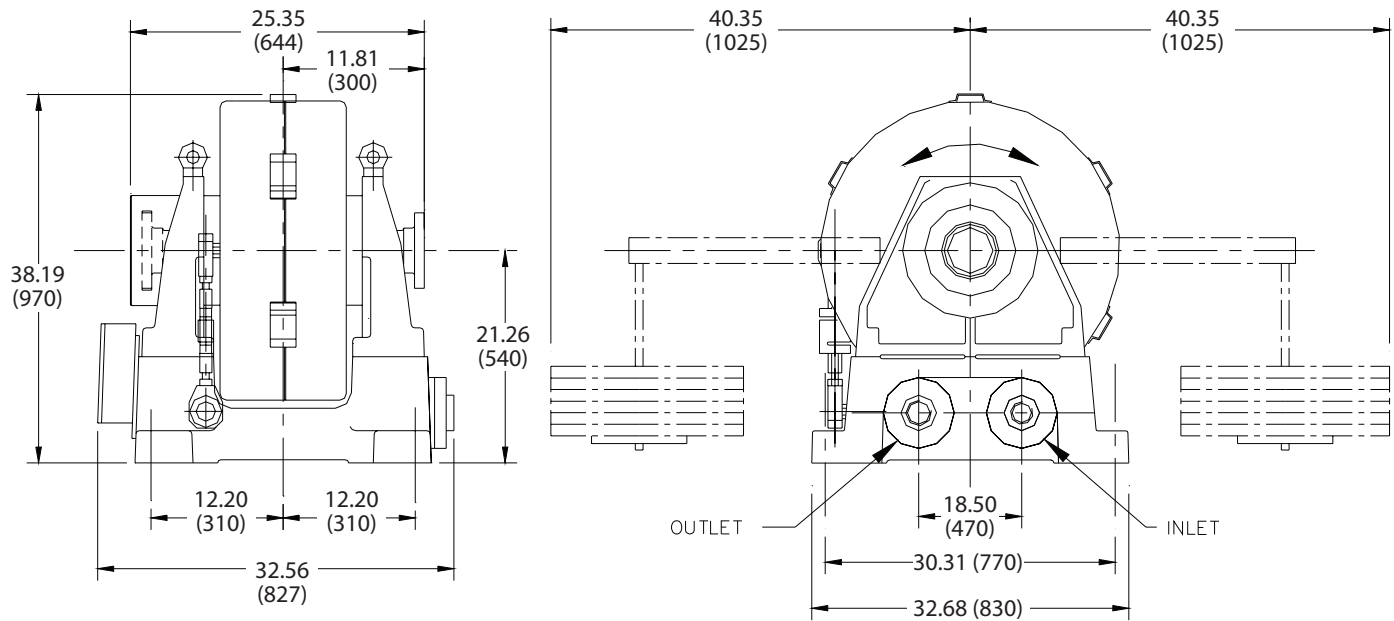


DE400 (English)



DE400 (Metric)





Specifications

Power: 536 hp (400 kW)

Torque: 1,475 ft-lb (2,000 Nm)

Speed: 8,000 rpm

Water Use: 74 gpm (4.7 lps) (No Cooling System)

Shipping Weight: 4,012 lb (1,820 kg)

Inertia Value: 26 ft² · lb (1.107 m² · kg)

Rotation: Dynamometer can be operated in both directions of rotation

Everything you need to succeed



3602 West Wheelhouse Road, Milwaukee, Wisconsin 53208 U.S.A.
(414) 755-0040 www.taylordyno.com

SMS2031v005