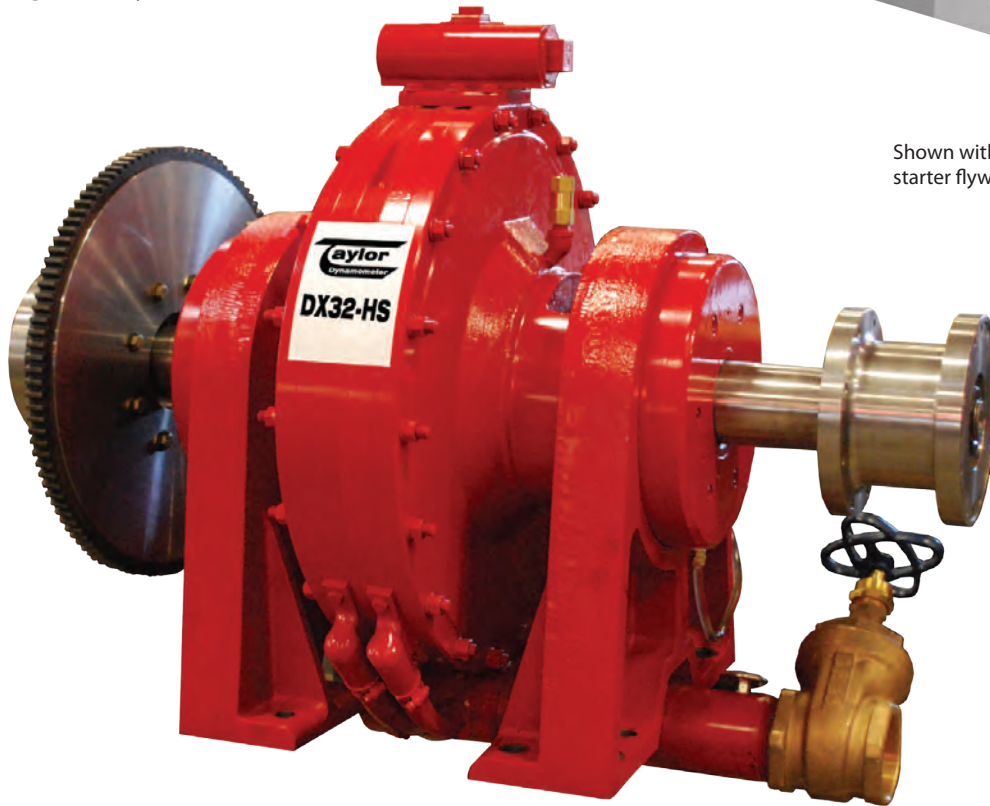




## DX32-HS / Engine Dynamometer



Shown with optional flanges and starter flywheel on shaft-ends.

## DX32-HS Water Brake Dynamometer

### Specifications

Power: 500 hp (373 kW)

Torque: 1,608 ft-lb (2,181 N)

Speed: 6,000 rpm

Water Use: 37 gpm (2.3 lps) (No Cooling System)

Inertia Value with Companion Flange or Torsional Coupling: 42.9 ft<sup>2</sup> · lb

Shipping Weight: 1,451 lb (658 kg)

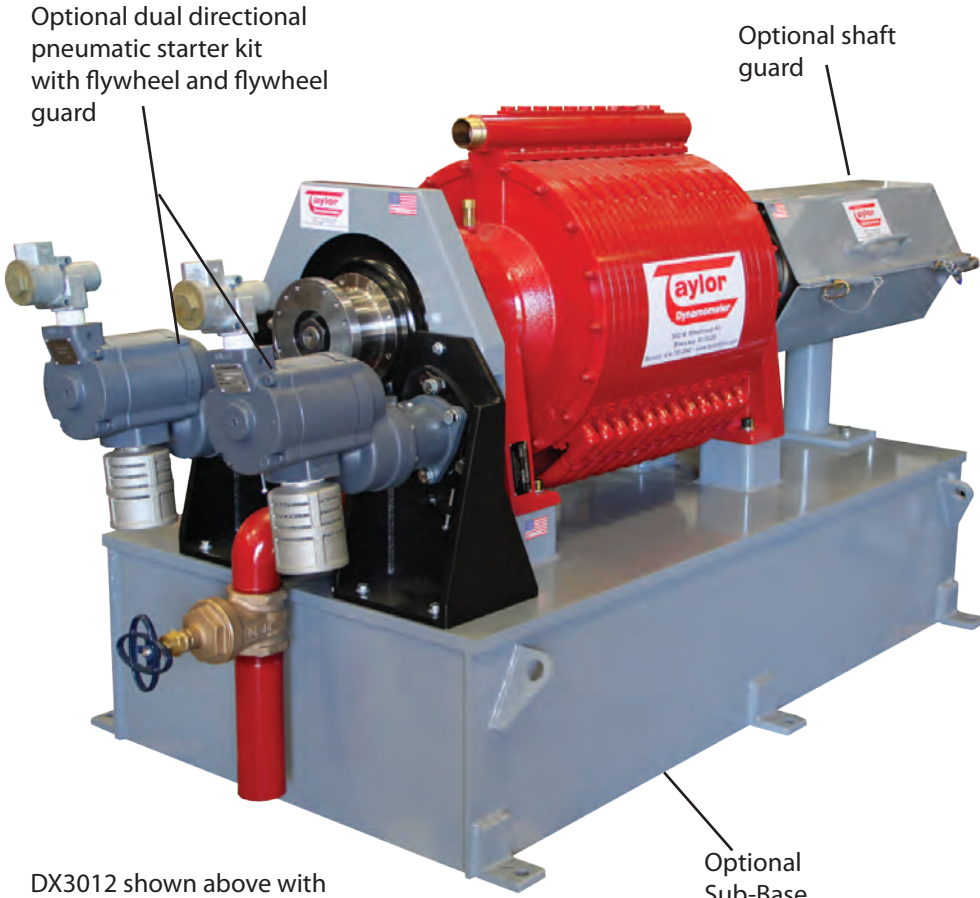
Rotation: Dynamometer can be operated in both directions of rotation

### Recommended Accessories

- Driveshaft - 1810
- Torsional Coupling - 1810
- Adapter Plate Kit
- Shaft Guard
- Sub-Base Kit
- Engine Cart - 6,000 lb. (2,724 kg)
- Air Starter - 35 hp (26 kW), Single or Dual Directional
- Cooling Column - 1,250 hp (932 kW)
- Charge Air Cooler
- Water Recirculating System

**Total Test Success**

# Optional Accessories



Optional dual directional pneumatic starter kit with flywheel and flywheel guard

Optional shaft guard

DX3012 shown above with available options

Optional Sub-Base

Optional Cooling Column



Optional Torsional Coupling

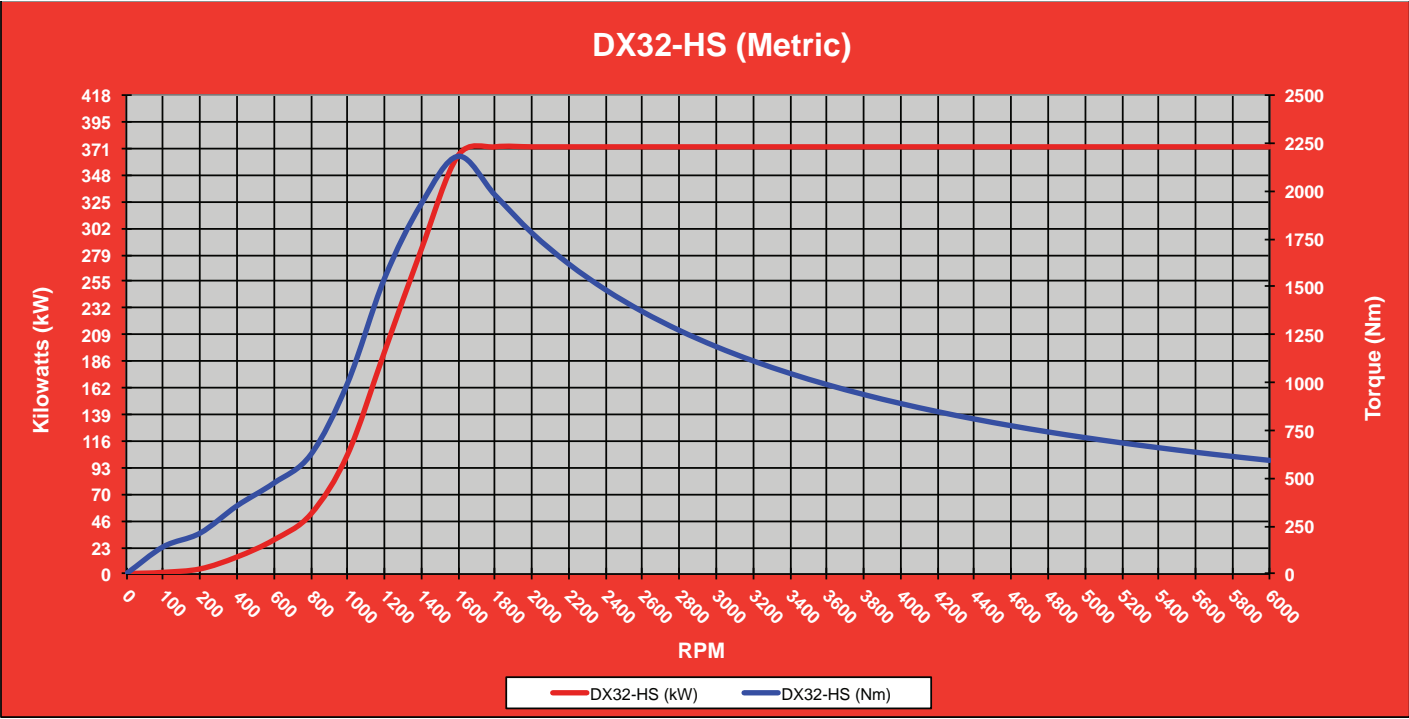
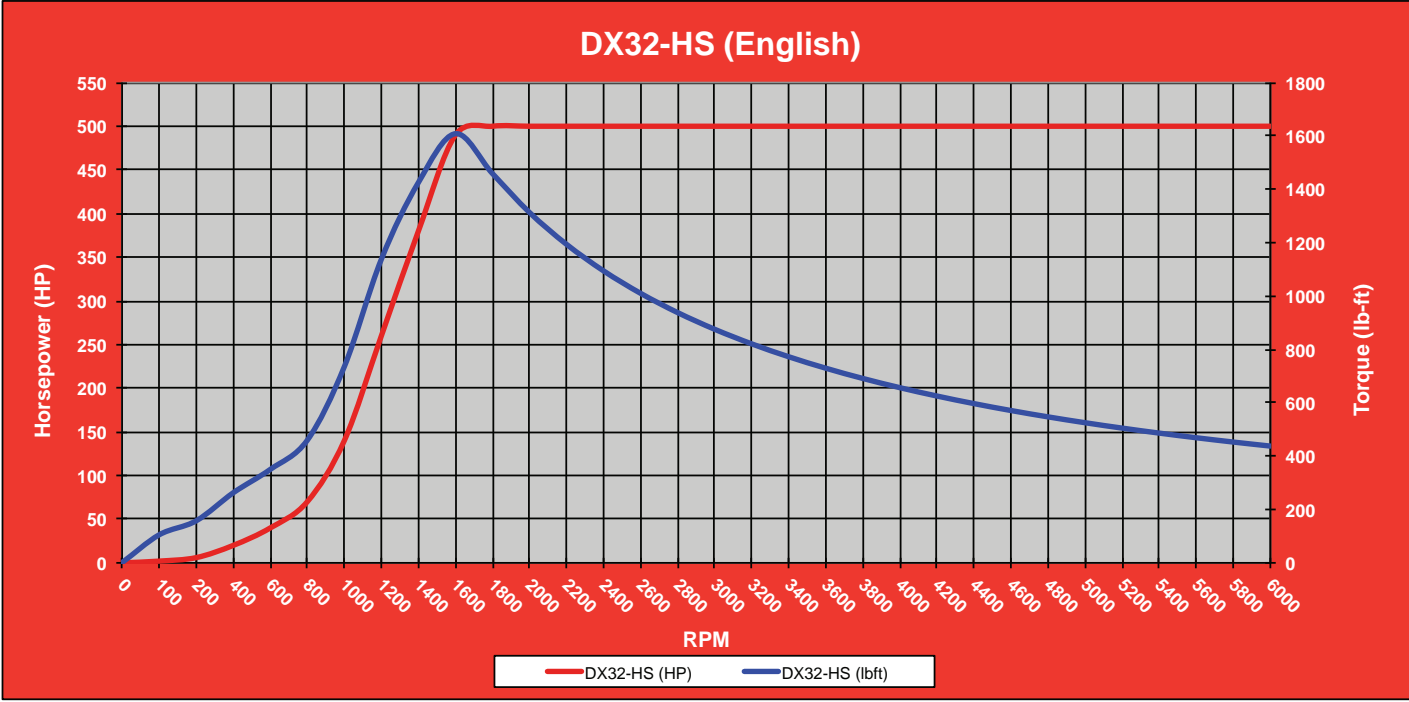


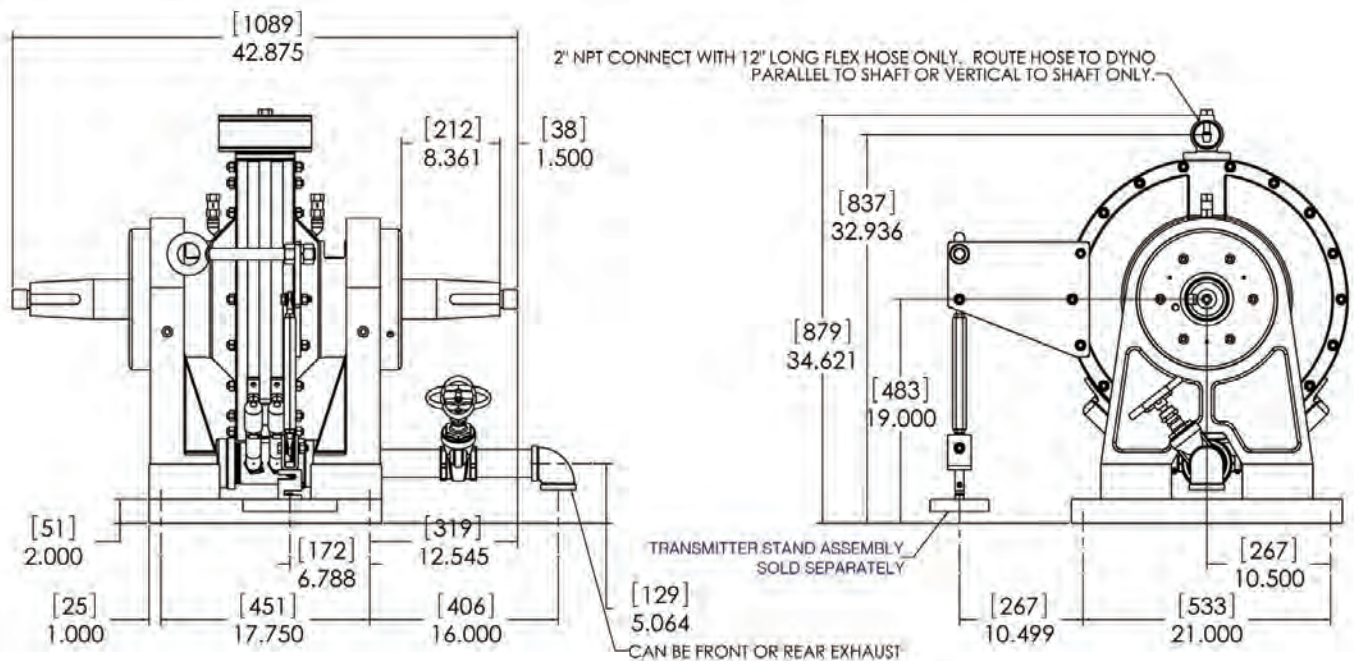
Optional Engine Cart (Engine not Included)



Optional Charge Air Cooler







## Specifications

Power: 500 hp (373 kW)

Torque: 1,608 ft-lb (2,181 N)

Speed: 6,000 rpm

Water Use: 37 gpm (2.3 lps) (No Cooling System)

Inertia Value with Companion Flange or Torsional Coupling: 42.9 ft<sup>2</sup> · lb

Shipping Weight: 1,451 lb (658 kg)

Rotation: Dynamometer can be operated in both directions of rotation

*Everything you need to succeed*



3602 West Wheelhouse Road, Milwaukee, Wisconsin 53208 U.S.A.  
 (414) 755-0040 [www.taylordyno.com](http://www.taylordyno.com)

SMS2007v004