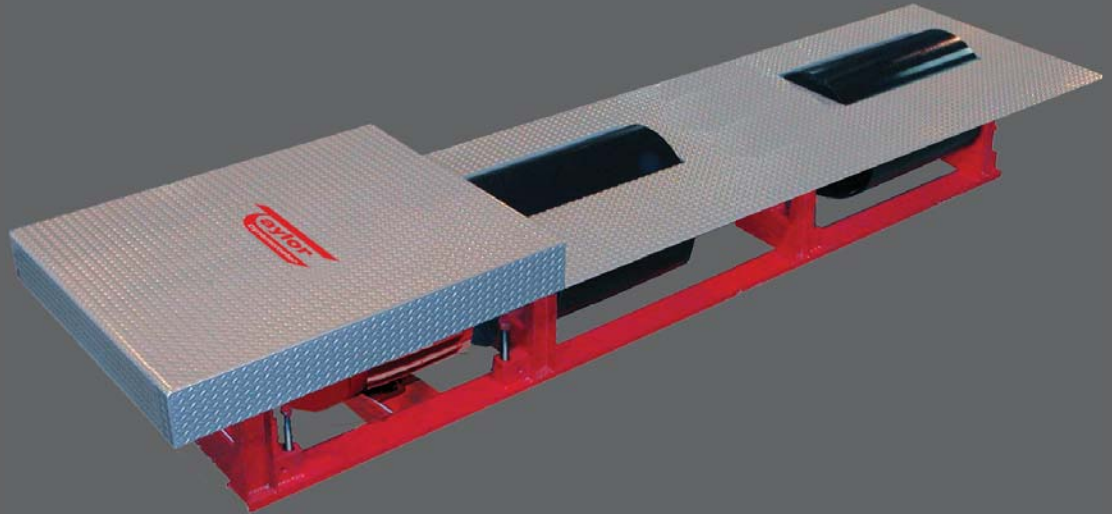




Chassis Dynamometer

TD-36S-AC

Chassis Dynamometer



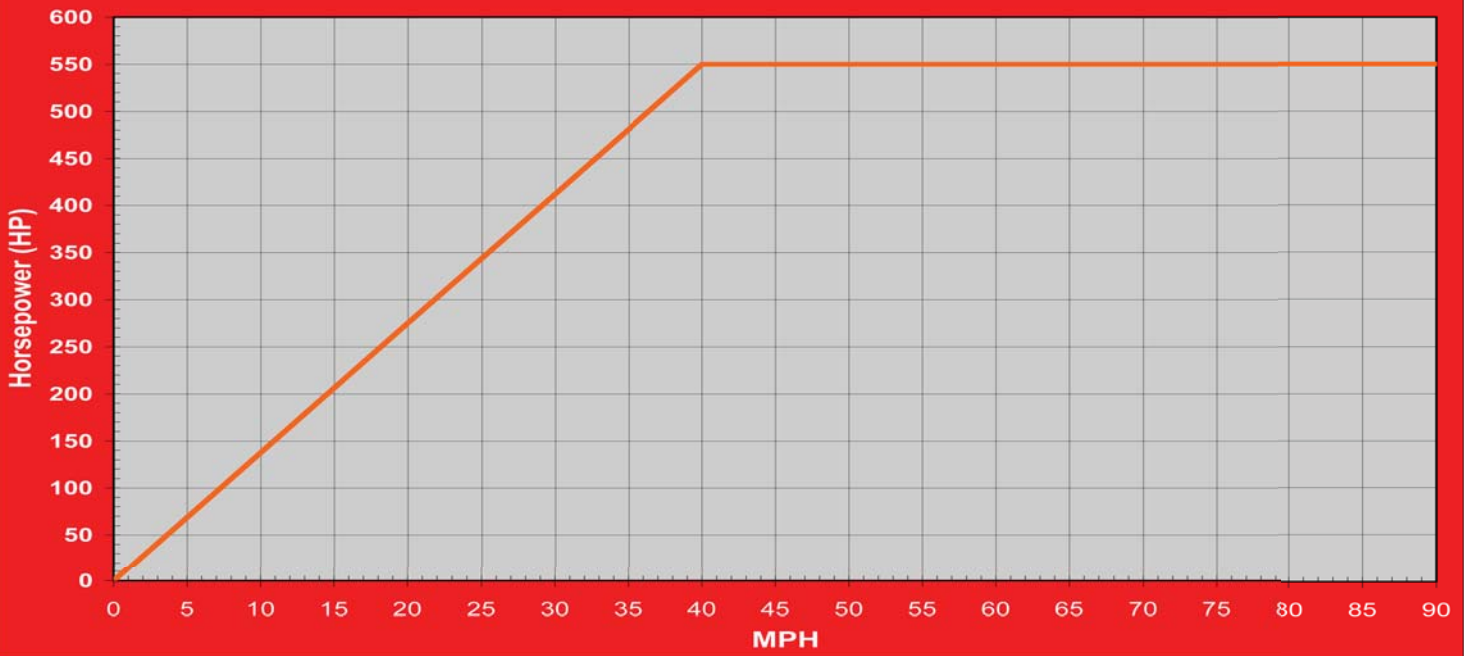
Specifications

Capacity: 550 hp (410 kw) at 40 mph (64 km/h)
Rolls: 36 in (915 mm) long, 2 fixed rolls
Roll Brakes: Pneumatically actuated disc
Weight Capacity: 30000 lb (13608 kg) per axle
Shipping Weight: 19700 lb (8936 kg)
Required Pit Depth: 35 in (889 mm)

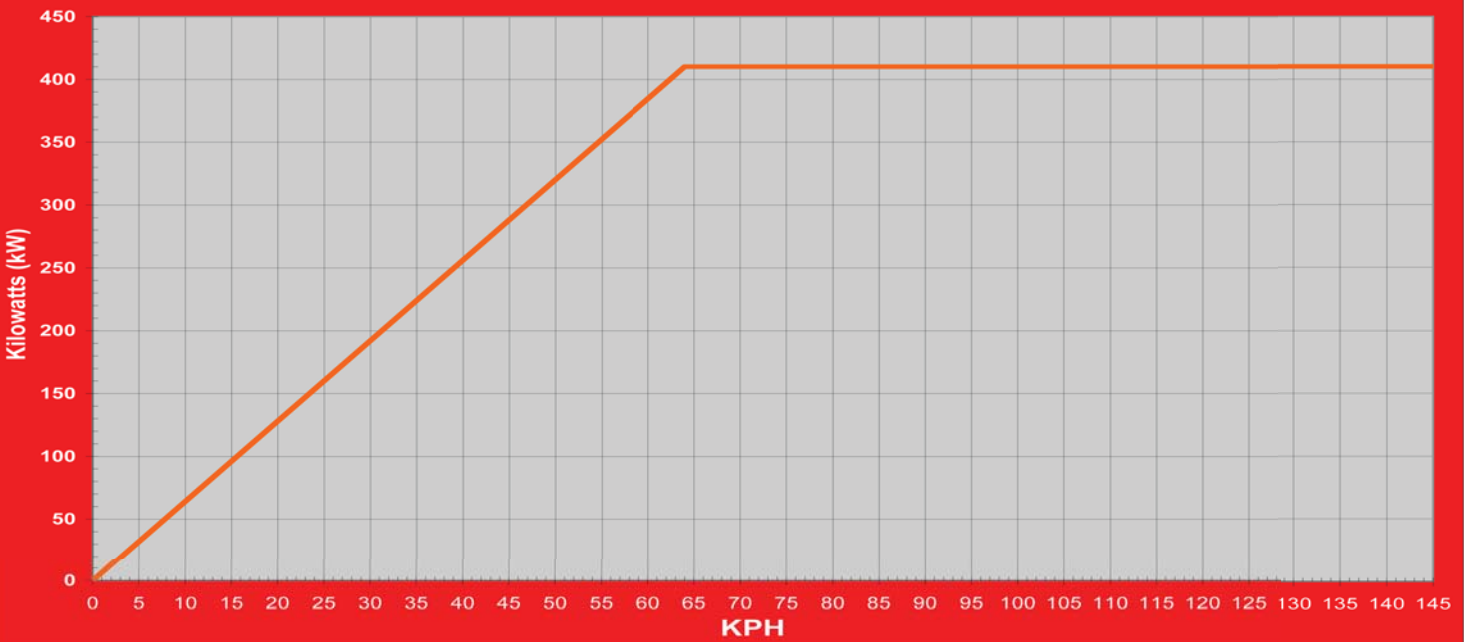
Recommended Accessories:

- Calibration Weights
- Stone Guard
- Exhaust Canopy
- Underbelly Exhaust
- Load Bank or Regenerative Feedback
- Guard Rail
- Wheel Chocks
- DynPro Data Acquisition and Control System

TD-36S-AC Power Curve, English

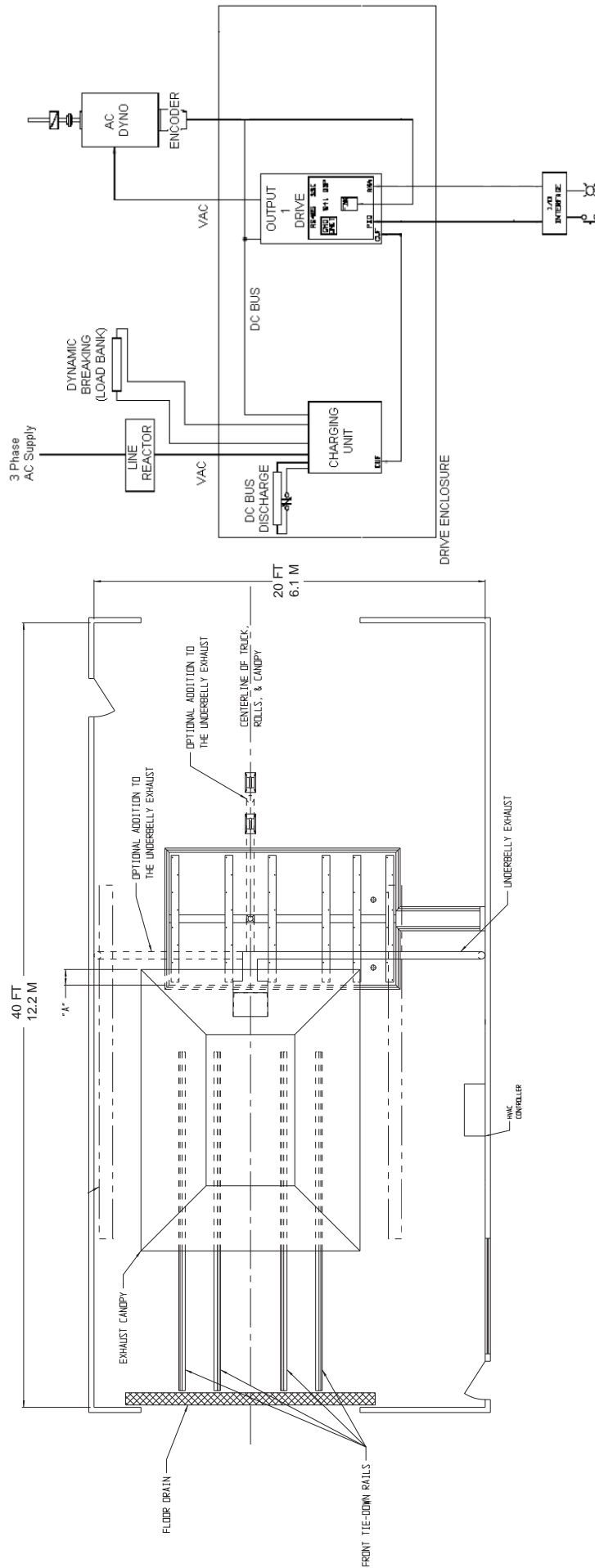


TD-36S-AC Power Curve, Metric



TD-36S-AC

Chassis Dynamometer



Weight Capacity: 30000 lb (13608 kg) per axle
Roll Brakes: Pneumatically actuated disc
Shipping Weight: 19700 lb (8936 kg)
Capacity: 550 hp (410 kw) at 40 mph (64 km/h)
Rolls: 36 in (915 mm) long, 2 fixed rolls
Required Pit Depth: 35 in (889 mm)

Note for Above View:

- (a) Refer to appropriate Taylor Foundation ("Pit") drawing - above are not working dimensions and are for use as layout guidance only. AC power, air and water required at one side wall as applicable.
- (b) Room length, and pit location within length, must be determined by user to fit maximum truck length and rear overhang.
- (c) Provide at least one man door for fire escape near rear of room, but not in rear wall because someone entering during a test could be struck by a stone flung from a tire. Provide ample fire extinguishers at each door and near driver.
- (d) "Back-on Drive-off" installation configuration preferred.