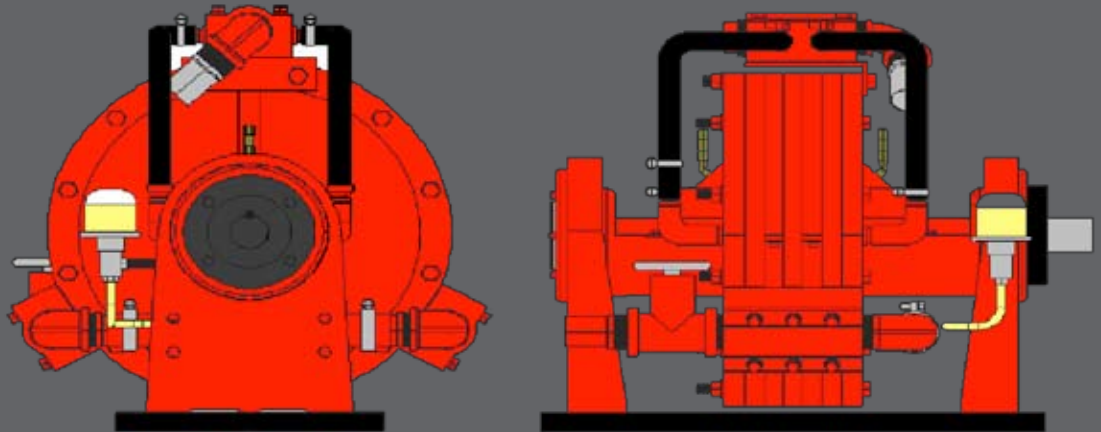




Engine Dynamometer

DH21

Engine Dynamometer



Specifications

Power: 270 hp (205 kw)

Torque: 425 ft. lbs (576 Nm)

Speed: 5,500 RPM

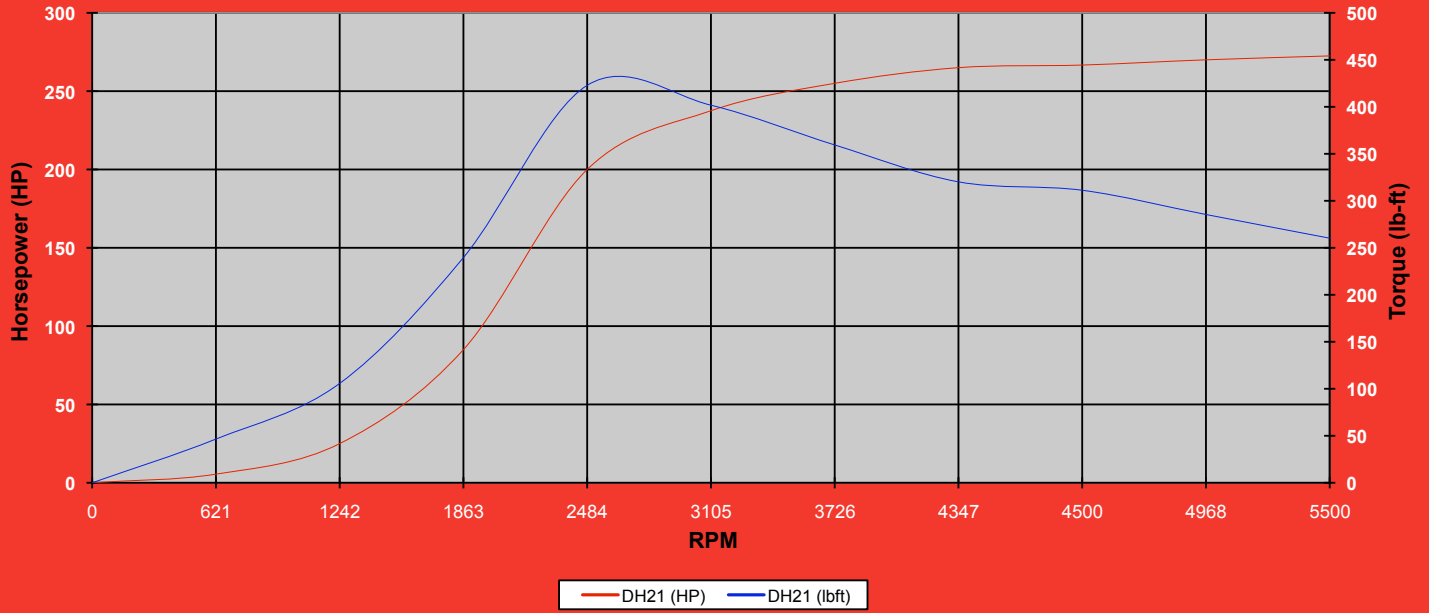
Water Use: 20 GPM (1.3L/s)(No Cooling System)

Shipping Weight: 325 lbs. (147 kg)

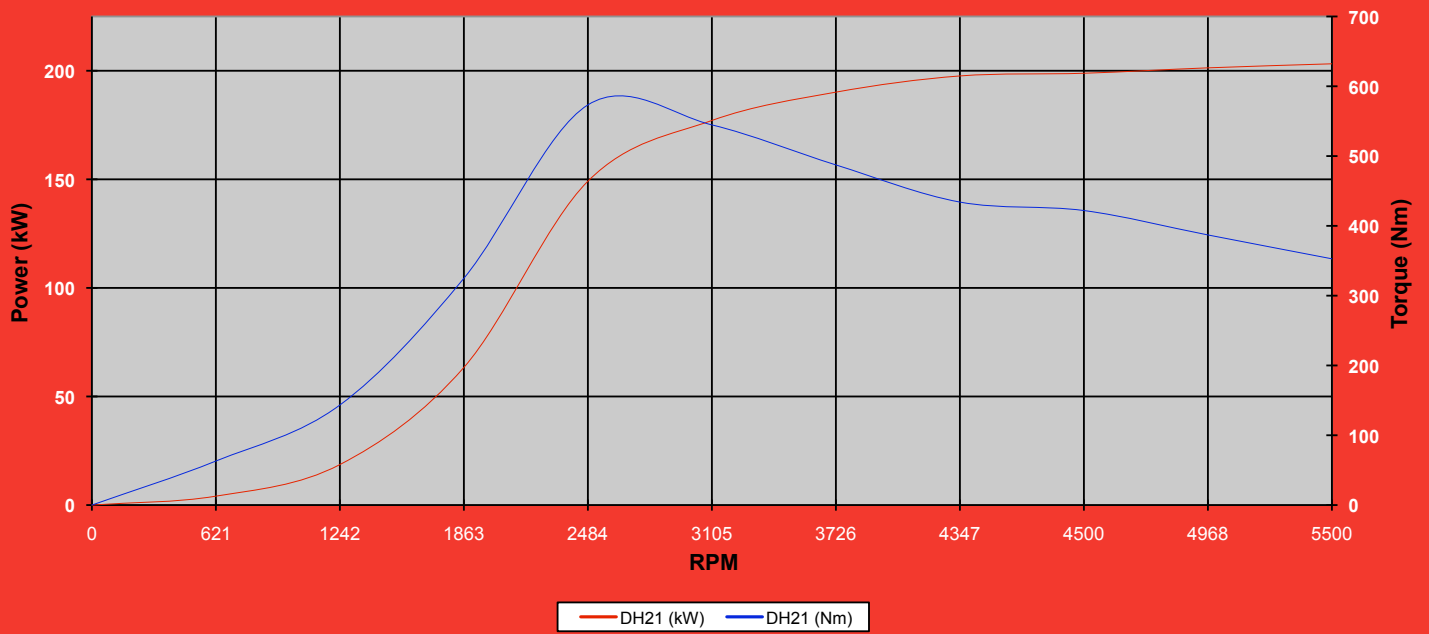
Recommended Accessories:

- Driveshaft
- Cooling Column - 1,250 hp (932 kw)
- Engine Cart - 6000lb. (2724 kg)
- Adapter Plate Kit - 1550
- Pneumatic Throttle Control
- Shaft Guard
- Charge Air Cooler
- Base Kit
- Water Recirculating System

DH21 (English)



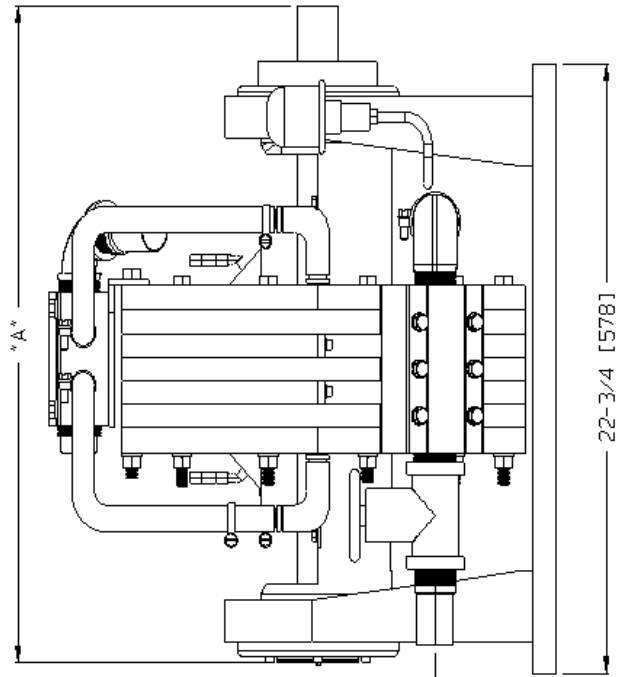
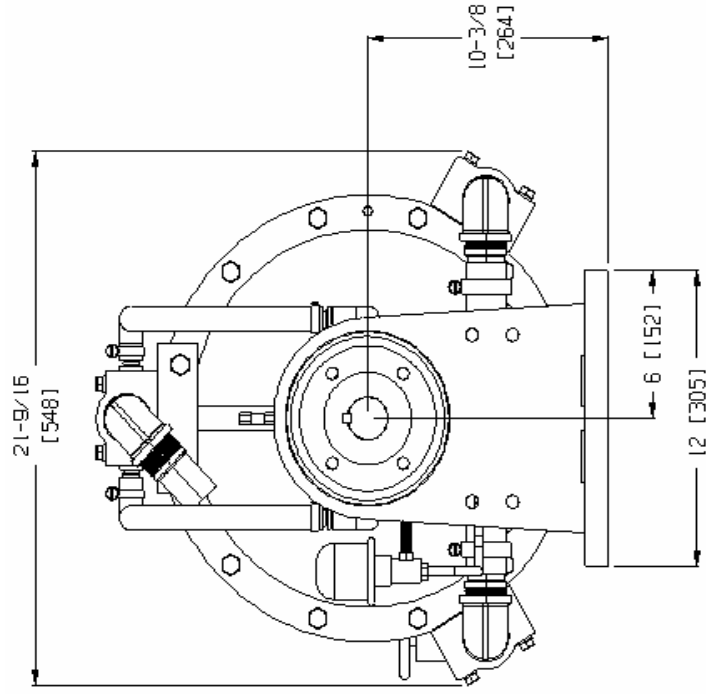
DH21 (Metric)



DH21

Engine Dynamometer

Taylor Dynamometer



	DIMENSION	*A*
DH-21	21	[533]
DH-22	22-3/4	[578]
DH-23	24-1/2	[622]

[] = mm

POWER: 270 hp (205 kw)
SPEED: 5,500 RPM
TORQUE: 425 ft. lbs. (576 Nm)
WATER USE: 20 GPM (1.3 L/s)(No Cooling System)
SHIPPING WEIGHT: 325 lbs. (147 kg)

SMS0898V006

3602 West Wheelhouse Road, Milwaukee Wisconsin U.S.A
www.taylordyno.com 414-755-0040