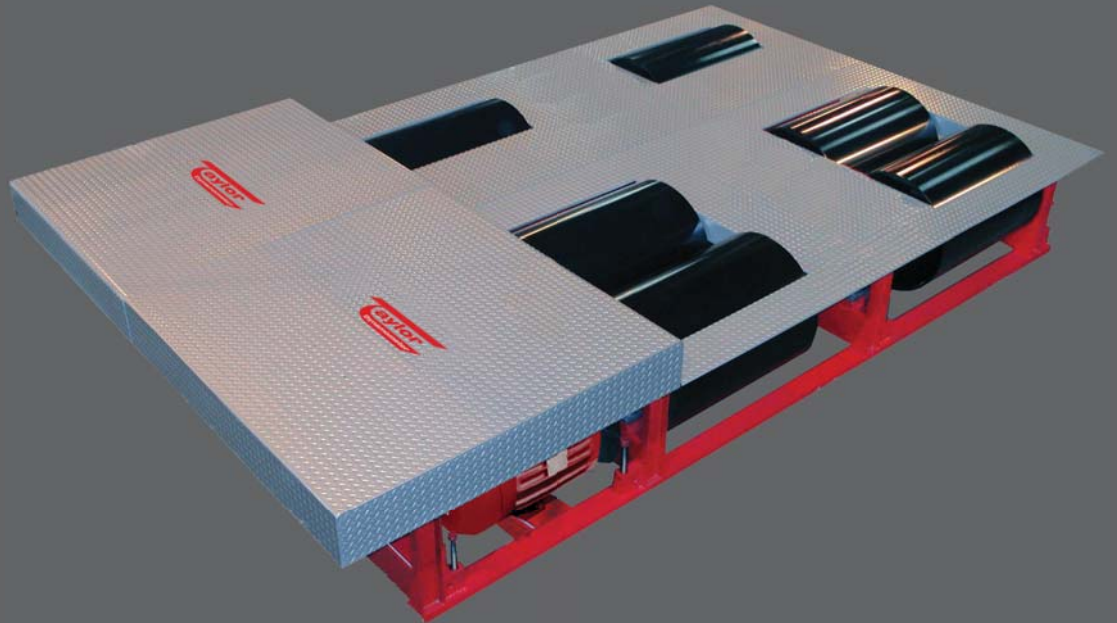




# Chassis Dynamometer

TD-36-AC

Chassis Dynamometer



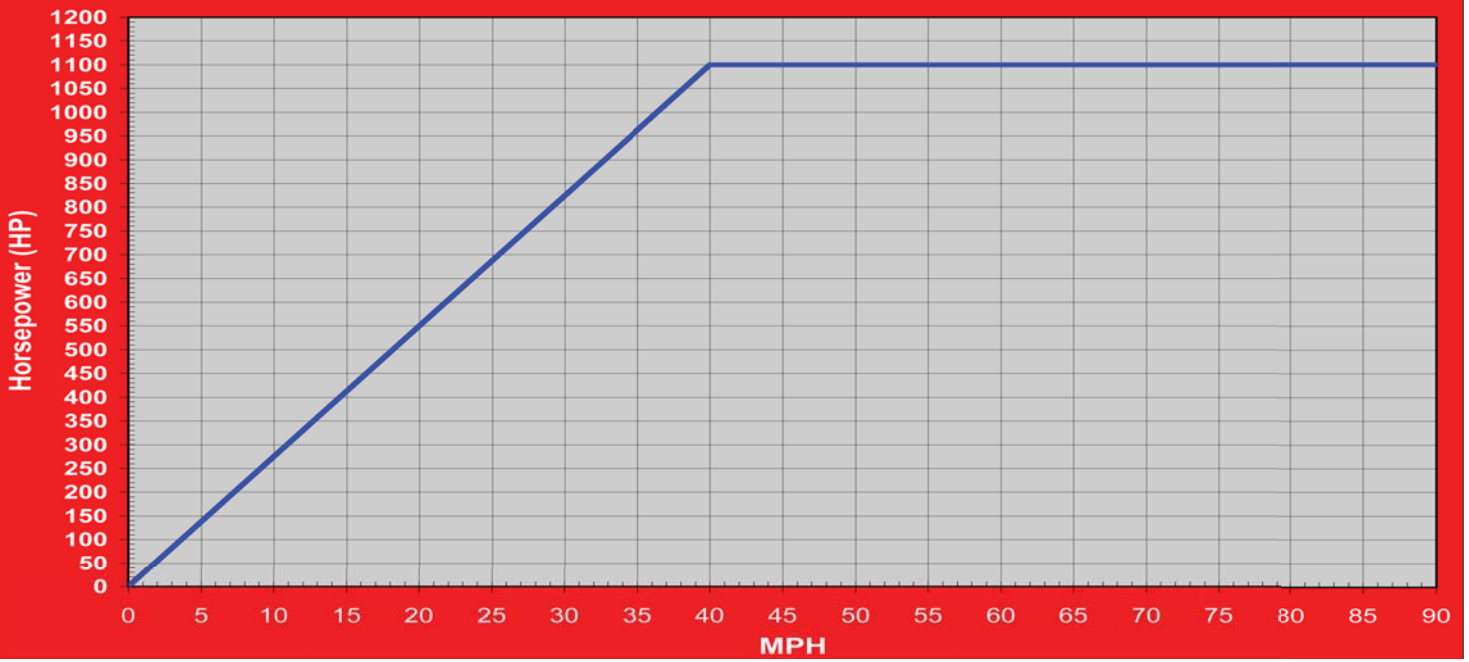
## Specifications

Capacity: 1100 hp (820 kw) at 40 mph (64 Km/h)  
Rolls: 36 in (915 mm) long, 4 fixed rolls to accommodate axle spreads from 48 in to 74 in (1219 mm to 1880 mm) tandem centers  
Roll Brakes: Pneumatically actuated disc  
Weight Capacity: 30000 lb (13608 kg) per axle  
Shipping Weight: 39400 lb (17872 kg)  
Required Pit Depth: 35 in (889 mm)

### Recommended Accessories:

- Calibration Weights
- Stone Guard
- Exhaust Canopy
- Underbelly Exhaust
- Load bank or Regenerative Feedback
- Guard Rail
- Wheel Chocks
- DynPro Data Acquisition and Control System

TD-36-AC Power Curve, English



TD-36-AC Power Curve, Metric

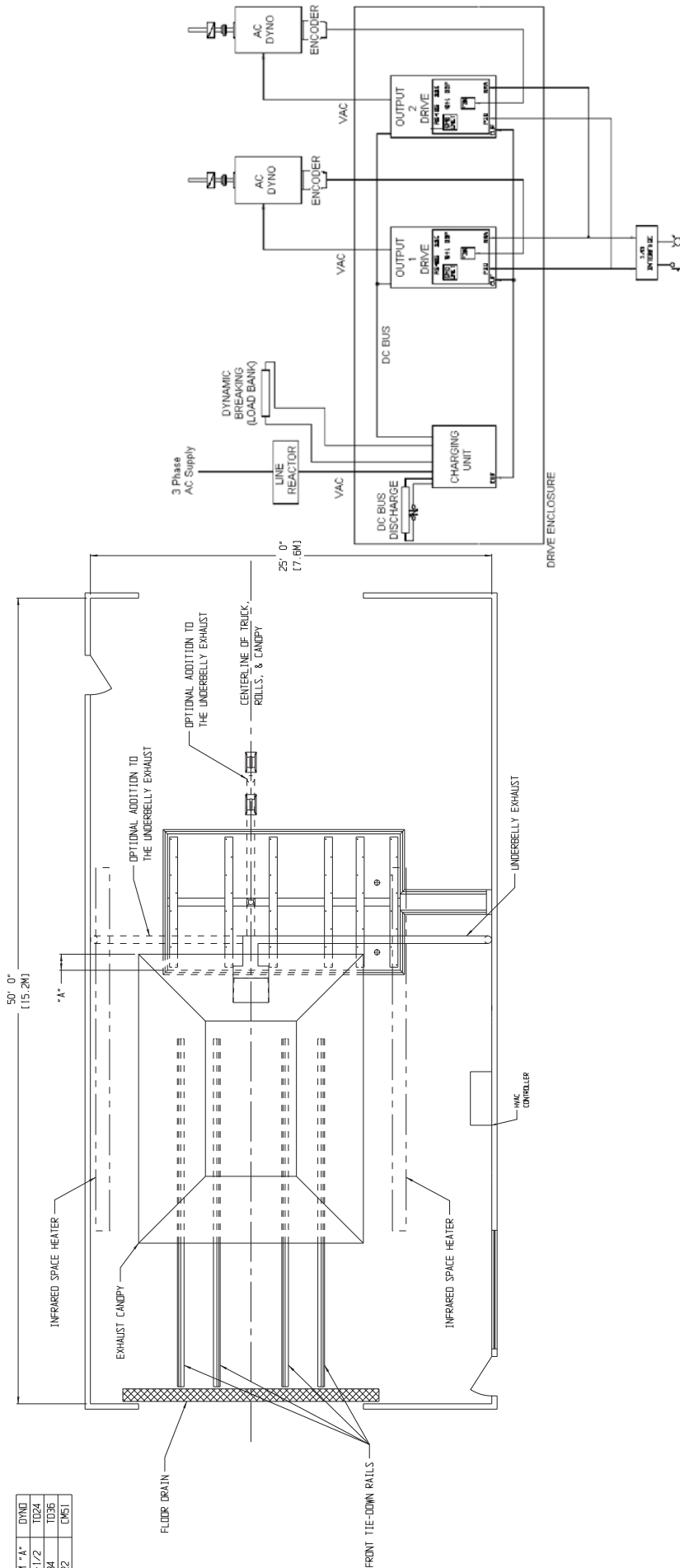


TD-36-AC

# Chassis Dynamometer

Taylor Dynamometer

DIM	"A"	DYNO
27-1/2	1024	
34	1036	
22	1051	



**Weight Capacity: 30000 lb (13608 kg) per axle**  
**Roll Brakes: Pneumatically actuated disc**  
**Shipping Weight: 39400 lb (17872 kg)**  
**Capacity: 1100 hp (820 kw) at 40 mph (64 Km/h)**  
**Rolls: 36 in (915 mm) long, 4 fixed rolls to accommodate axle spreads from 48 in to 74 in (1219 mm to 1880 mm) tandem centers**  
**Required Pit Depth: 35 in (889 mm)**

**Note for Above View:**

- (a) Refer to appropriate Taylor Foundation ("Pit") drawing - above are not working dimensions and are for use as layout guidance only. AC power, air and water required at one side wall.
- (b) Room length, and pit location within length, must be determined by user to fit his maximum truck length and rear overhang.
- (c) Provide at least one mandoor for fire escape near rear of room, but not in rear wall because someone entering during a test could be struck by a stone flung from a tire. Provide ample fire extinguishers at each door and near driver.
- (d) "Back-on Drive-off" preferred.

SMS0839v002