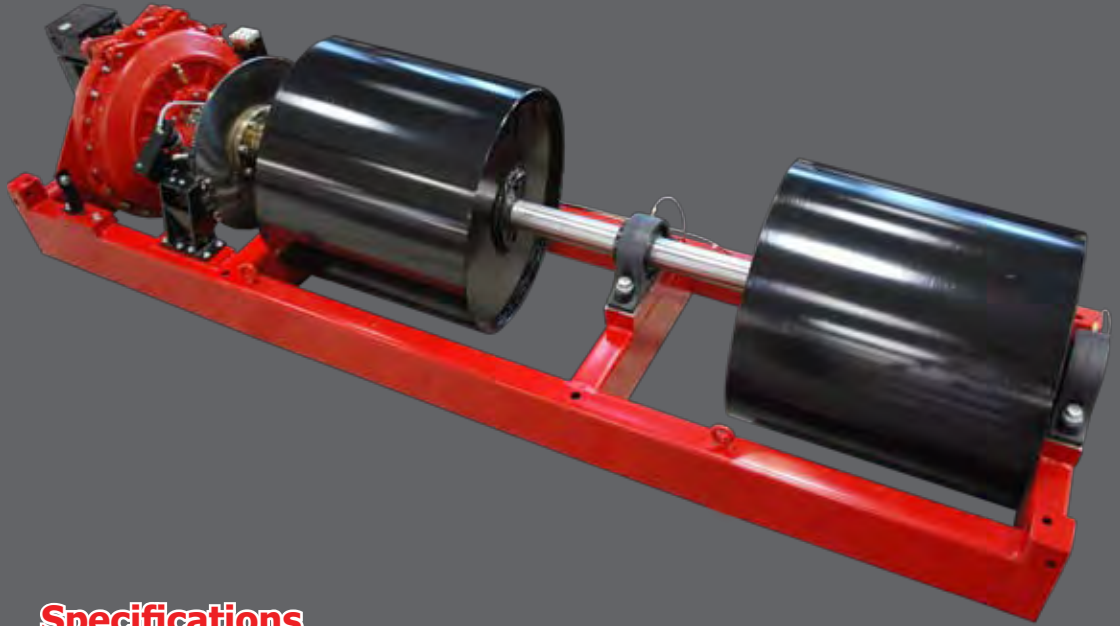




# Chassis Dynamometer

TD-36S

Chassis Dynamometer



## Specifications

Power: 550 hp (410.3 kw) @ 45 mph (72 Km/h)

Rolls: 36" (915 mm) by 31" (787 mm) long,

Roll Brakes: Pneumatically actuated disc

Weight Capacity: 30,000 lbs. (13,608 kg) per axle

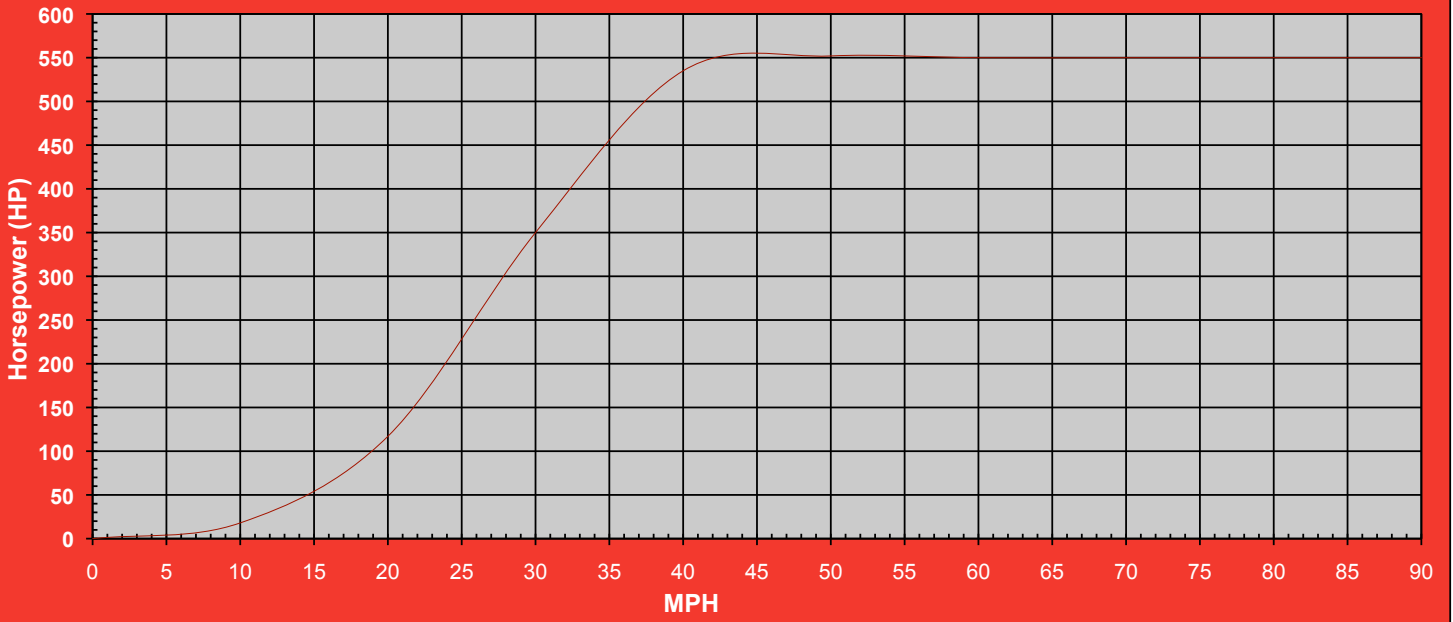
Pit Required Depth: 35" (889 mm)

Shipping Weight: 13,200 lbs. (5987 kg)

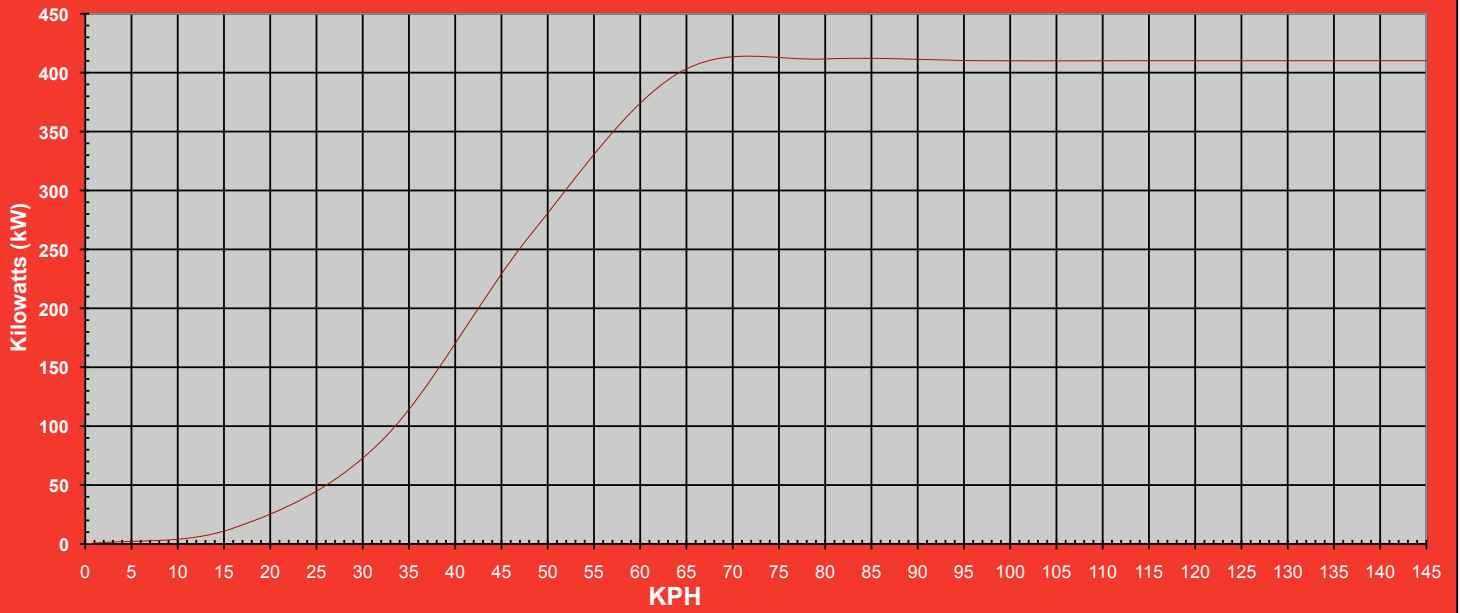
### Recommended Accessories:

- Calibration Weights
- Exhaust Canopy
- Wheel Chocks
- Stone Guard
- Underbelly Exhaust
- Guard Rails
- Cooling Fans
- Water Recirculating System

TD-36 S Power Curve, English

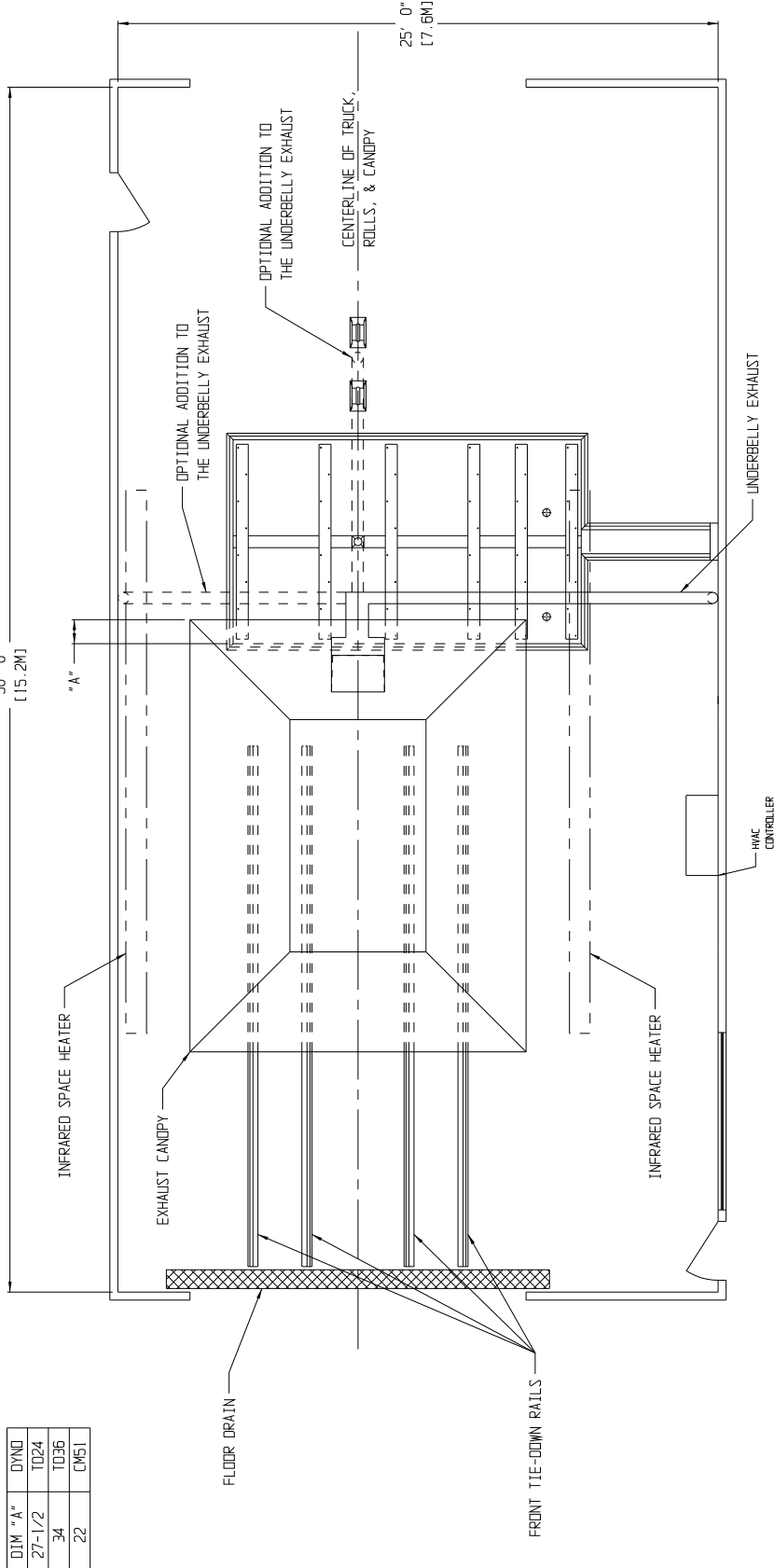


TD-36 S Power Curve, Metric



TD-36S

# Chassis Dynamometer



DIM "A"	DYNO
27-1/2	TD24
34	TD36
22	CM51

- Weight Capacity: 30,000 lbs. (13,608 kg) per axle**
- Roll Brakes: Pneumatically actuated disc**
- Shipping Weight: 6,600 lbs. (2994 kg)**
- Capacity: 550 hp (410.3 kw) at 45 mph (72 Km/h)**
- Rolls: 36" (915 mm) by 31" (787 mm) long**
- Pit Required Depth: 35" (889 mm)**

### Note For Above View:

- Refer to appropriate Taylor Foundation ("Pit") drawing - above are not working dimensions and are for use as layout guidance only. AC power, air and water required at one side wall.
- Room length, and pit location within length, must be determined by user to fit his maximum truck length and rear overhang.
- Provide at least one mandoor for fire escape near rear of room, but not in rear wall as someone entering during a test could be struck by a stone flung from a tire. Provide ample fire extinguishers at each door and near driver.
- "Back-on Drive-off" preferred.

SMS811V007