



# Chassis Dynamometer

CM-51

# Chassis Dynamometer

## Specifications

Weight Capacity: 25,000 lb (11,340 kg) per axle

Roll Brakes: Pneumatically actuated disc

Shipping Weight: 8,340 lb (3,783 kg)

Capacity: 1,100 HP (820 kw) at 80 MPH (129 Km/h)

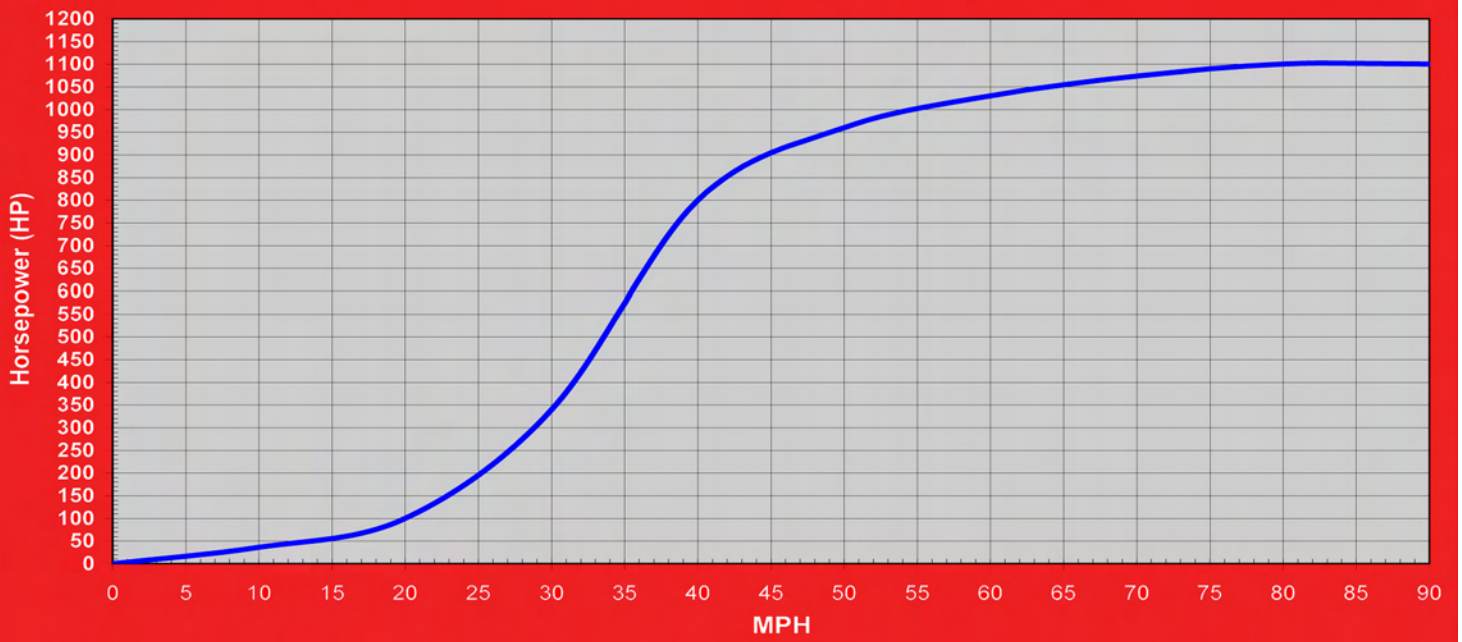
Rolls: 20in (508 mm) by 36in (915 mm) long, 4 front fixed rolls, 2 rear rolls fixed to accommodate axle spreads from 48in to 60in (1219 to 1524 mm) tandem centers

Pit Required Depth: 27in (686 mm)

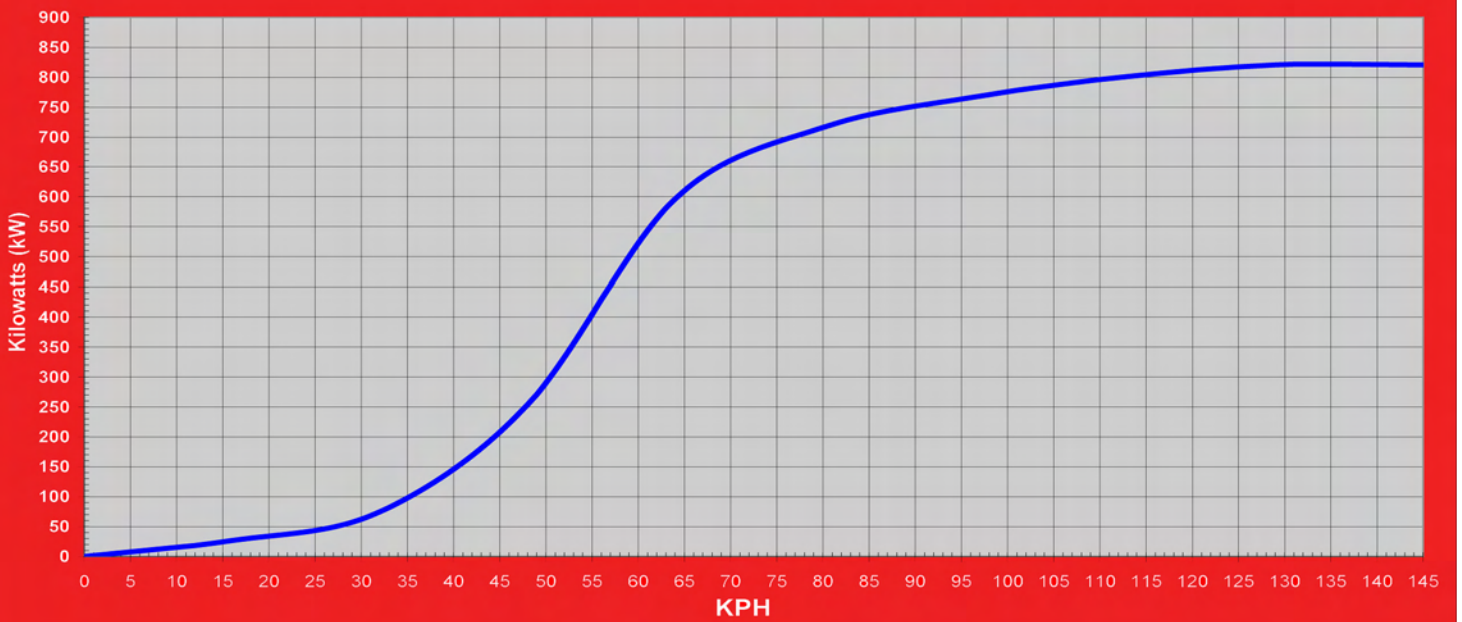
### Recommended Accessories:

- Calibration Weights
- Stone Guard
- Exhaust Canopy
- Underbelly Exhaust
- Water Recirculating System
- Guard Rail
- Wheel Chocks
- DynPro Data Acquisition & Control System

CM51 Power Curve, English

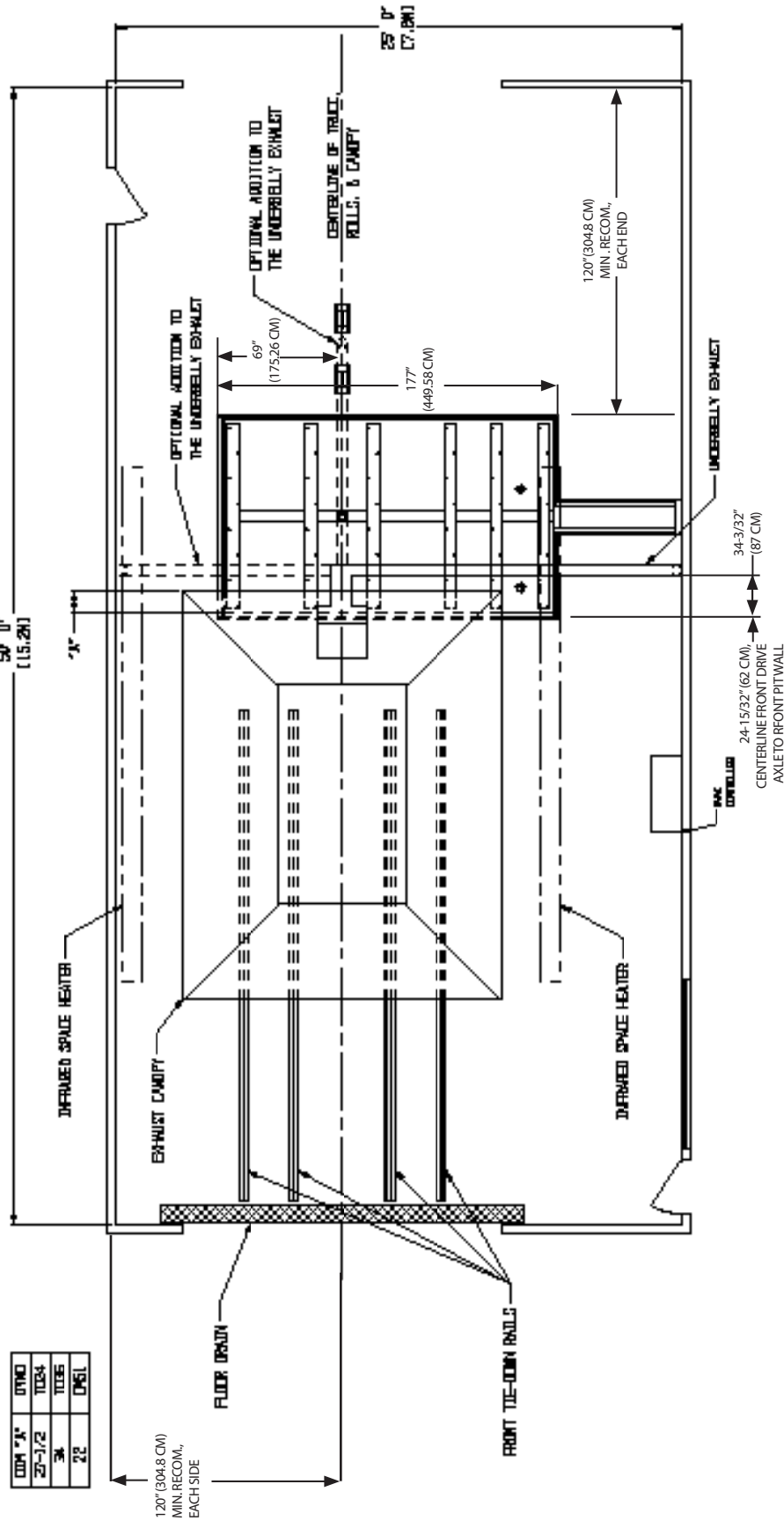


Cm51 Power Curve, Metric



CM-51

# Chassis Dynamometer



**Weight Capacity:** 25,000 lb (11,340 kg) per axle  
**Roll Brakes:** Pneumatically actuated disc  
**Shipping Weight:** 8,340 lb (3,783 kg)  
**Capacity:** 1,100 HP (820 kw) at 80 MPH (129 Km/h)  
**Rolls:** 20in (508 mm) by 36in (915 mm) long, 4 front fixed rolls, 2 rear rolls fixed to accommodate axle spreads from 48in to 60in (1219 to 1524 mm) tandem centers  
**Pit Required Depth:** 27in (686 mm)

**Note For Above View:**

- (a) Refer to appropriate Taylor Foundation ("Pit") drawing - above are not working dimensions and are for use as layout guidance only. AC power, air and water required at one side wall as applicable.
- (b) Room length, and pit location within length, must be determined by user to fit maximum truck length and rear overhang.
- (c) Provide at least one man door for fire escape near rear of room, but not in rear wall as someone entering during a test could be struck by a stone flung from a tire. Provide ample fire extinguishers at each door and near driver.
- (d) "Back-on Drive-off" installation configuration preferred.

SMS0802v005