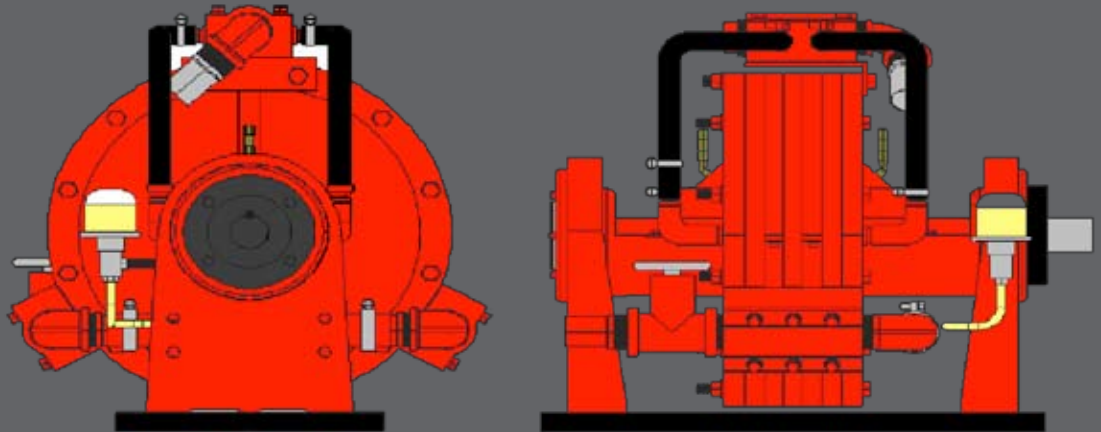




Engine Dynamometer

DH22

Engine Dynamometer



Specifications

Power: 530 hp (410 kw)

Torque: 850 ft. lbs (1153 Nm)

Speed: 5,500 RPM

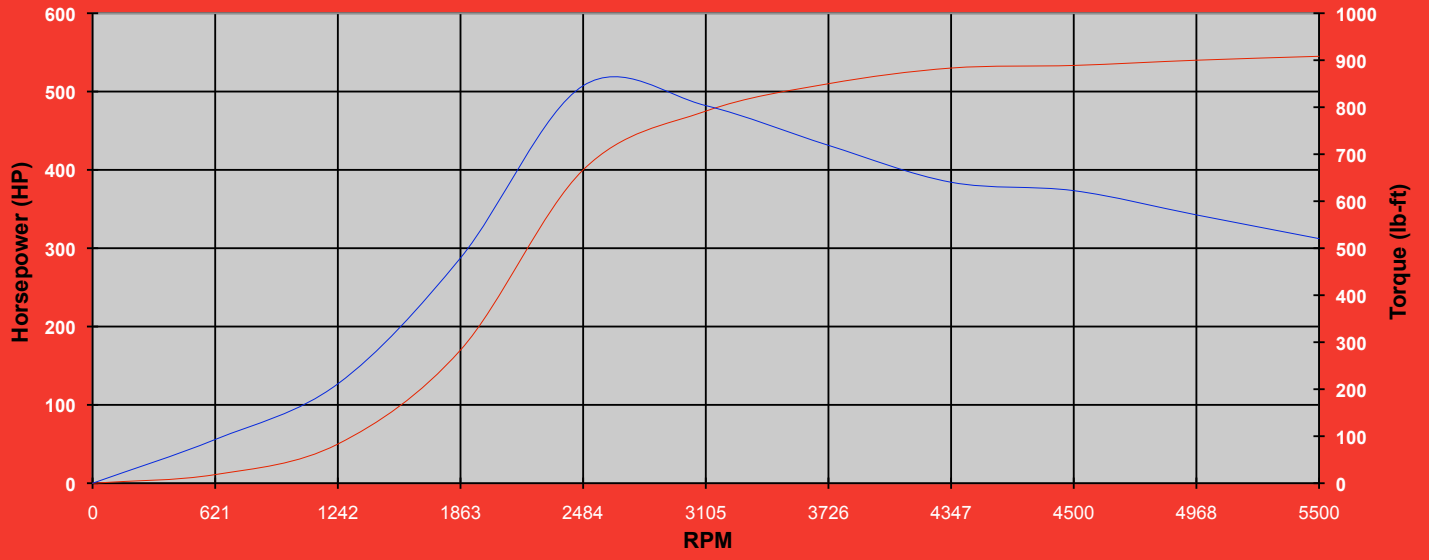
Water Use: 40 GPM (2.5L/s)(No Cooling System)

Shipping Weight: 400 lbs. (181 kg)

Recommended Accessories:

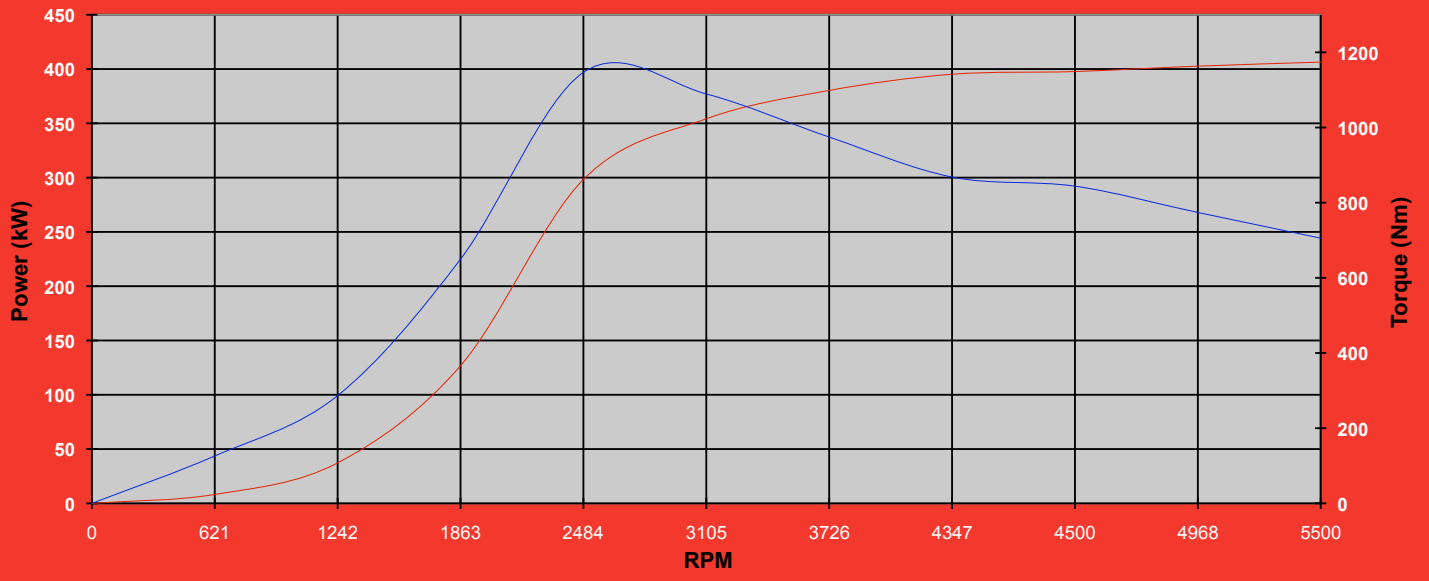
- Driveshaft
- Cooling Column - 1,250 hp (932 kw)
- Engine Cart - 6000lb. (2724 kg)
- Adapter Plate Kit - 1550
- Pneumatic Throttle Control
- Shaft Guard
- Charge Air Cooler
- Base Kit
- Water Recirculating System

DH22 (English)



— DH22 (HP) — DH22 (lbft)

DH22 (Metric)

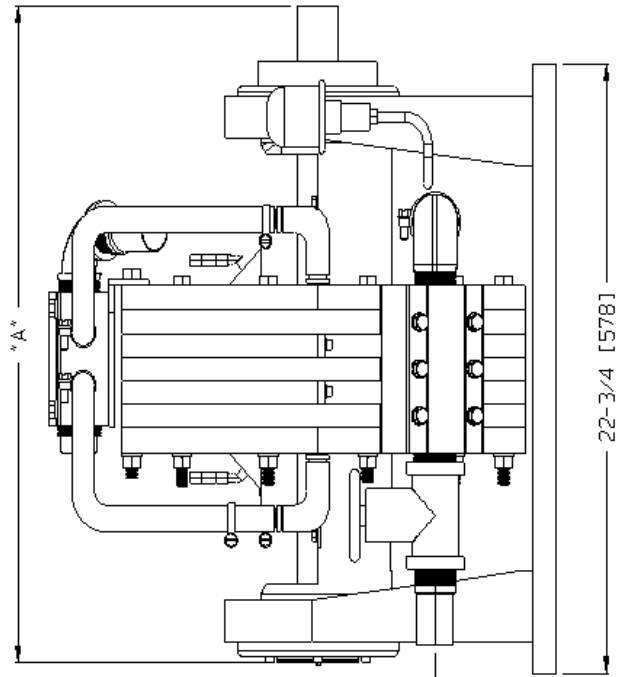
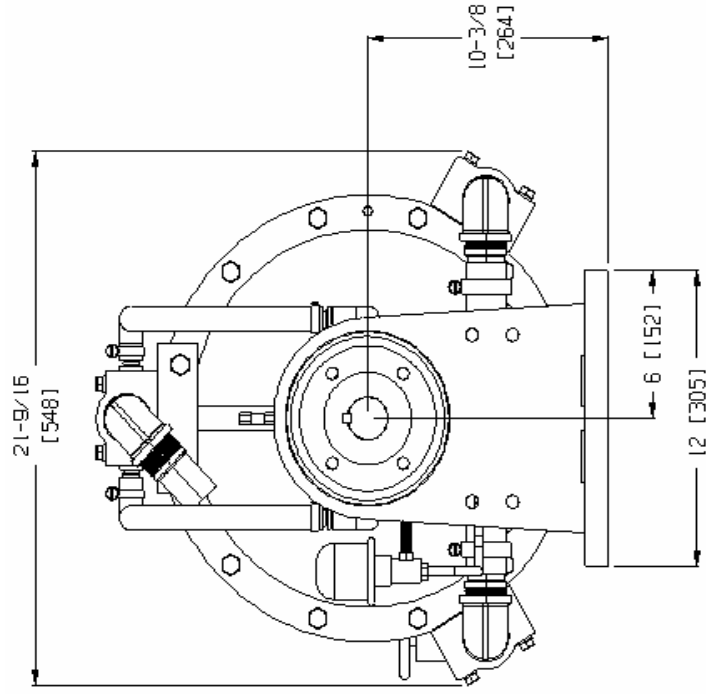


— DH22 (kW) — DH22 (Nm)

DH22

Engine Dynamometer

Taylor Dynamometer



| | DIMENSION | *A* |
|-------|-----------|-------|
| DH-21 | 21 | [533] |
| DH-22 | 22-3/4 | [578] |
| DH-23 | 24-1/2 | [622] |

[] = mm

POWER: 530 hp (410 kw)
SPEED: 5,500 RPM
TORQUE: 850 ft. lbs. (1153 Nm)
WATER USE: 40 GPM (2.5 L/s)(No Cooling System)
SHIPPING WEIGHT: 400 lbs. (181 kg)

SMS0899v006

3602 West Wheelhouse Road, Milwaukee Wisconsin U.S.A
www.taylordyno.com 414-755-0040