

# 水循环系统

Taylor Dynamometer, Inc. 很高兴为您提供水力制动测功器用水循环系统。该系统具有众多显著的优点：

- 通过水源保护降低测功器运行费用。
- 通过受控的、高质量水源降低测功器维护费用。
- 使用蒸发排放替代排水排放，确保对环境不造成污染。
- 适宜的水压、流量和冷却保证了测功器的优异性能。

该水循环系统设计用于水力制动测功器，不过它也可以用于各种使用水冷的产热设备实现节水功能。如果系统设计的容量足够大，则一个系统可供多个测功器或其他热源使用。

**Taylor Dynamometer 可提供如下任意或全部系统组件：**

## PLC 控制指令中心

该指令中心包含最先进的电动机起动器、变压器、电源和附件连接。为了使该系统全面可定制，我们采用可编程逻辑控制器控制指令中心。可对指令中心就起动温度、故障通知、紧急停止以及其他许多方便选项进行编程，以便使您的应用处于最佳状态。



## Pump & Motors

Taylor Dynamometer will supply you with the best possible pumps with “totally enclosed fan cooled” motors for your application. Some of the different styles are centrifugal, vertical turbine, and centrifugal self-priming. All pumps are sized specifically for your application and related cooling volume and pressure requirements.

## Evaporative Cooling Tower

The Evaporative Cooling Tower is a high-temperature fill designed for optimum heat transfer and efficiency. The fill is self-extinguishing for fire resistance. The fan is a forwardly curved centrifugal type, with a hot dip galvanized construction. The fan is statically and dynamically balanced to minimize vibration. The drip-proof ball bearing fan motor is suitable for outdoor service and is mounted on an adjustable base. Bottom screens are provided for safety. The blower motor is totally enclosed, so as to protect the motor from dust and other foreign matter.

The Evaporative Cooling Tower is to be installed outdoors, on an unobstructed rooftop or on ground level away from walls and other barriers, to avoid air recirculation.

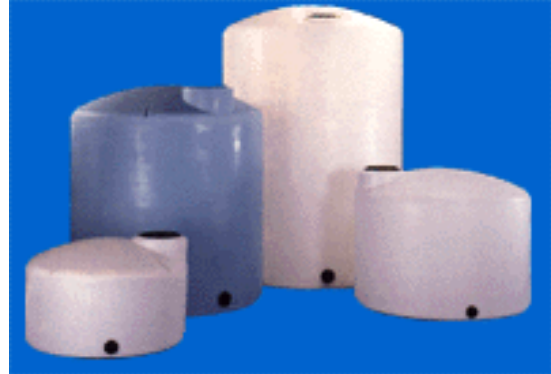


## Temperature Sensor

Single Type K thermocouple that is linearized, calibrated and cold junction compensated.

## Holding Tanks

High temperature holding tank populated with the appropriate fittings for your application. Holding tank has a maximum fluid specific gravity of 1.9.



## Specifications & Installation Drawings

Taylor Dynamometer will provide specifications for each pump and motor, Evaporative Cooling Tower, and if applicable, holding tanks. Taylor Dynamometer will also provide the following informational Forms and Installation Drawings:

- Water Flow Rates
- Installation Drawing - Water Recirculating System - Sump Style
- Installation Drawing - Water Recirculating System - Tank Style
- Installation Drawing - Evaporative Cooling Tower Layout
- Electrical Schematic Drawing - Command Center
- Assembly Drawing - Recirculating Control System Command Center
- Command Center Operation Instructions
- Water Recirculating System Schematic

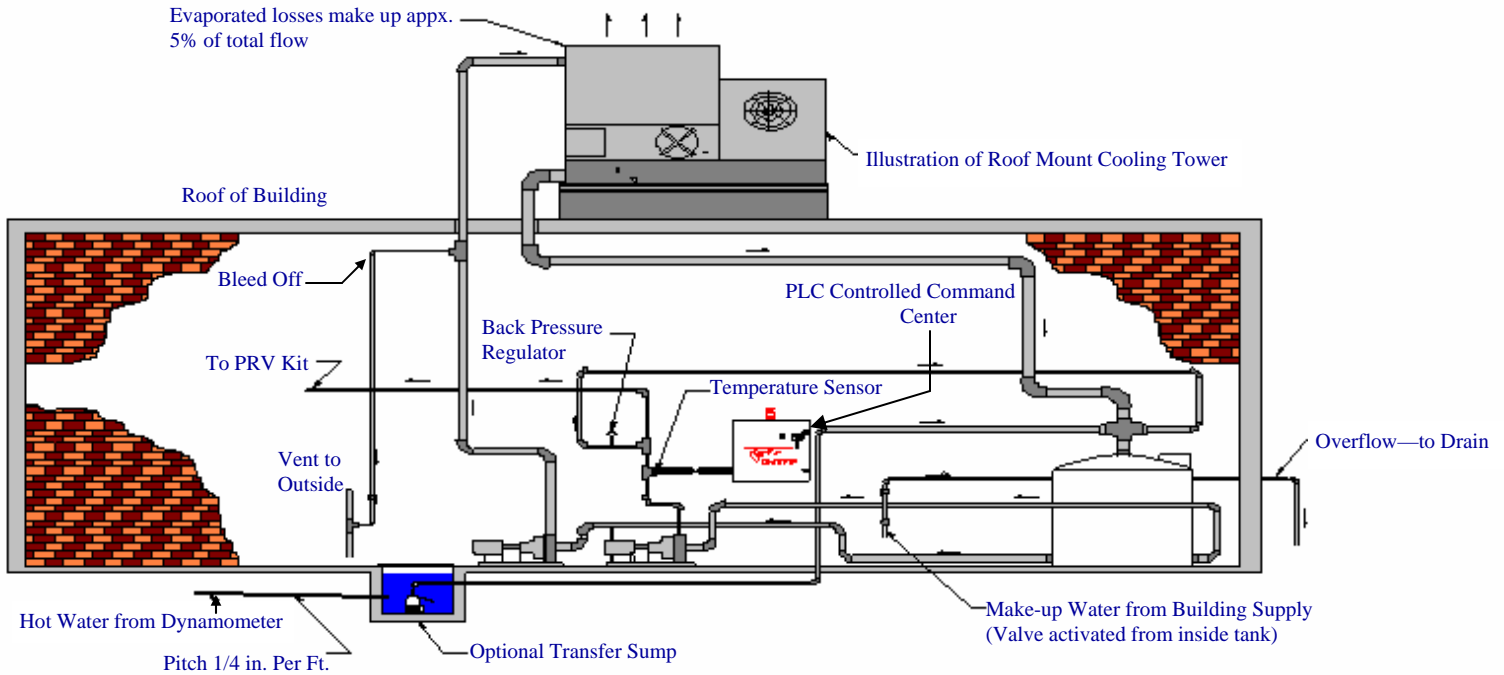
### **The customer to supply the following components:**

- Remote sump or above ground tank, 2,000 gallon minimum (if not purchased from Taylor).
- Common plumbing items, such as pipe, tile and fittings, gate valves and back flow preventor.
- Common electrical items, such as wire.
- Evaporative Cooling Tower foundation, including steel beams.
- Deck plates/sump cover, when applicable.



EXPERIENCE THAT MEASURES UP

## Water Recirculating System With Above Ground Storage Tank



## Water Recirculating System With In-Ground Sump

